

WARNING. This material may be protected by copyright law
(title 17 U.S. code)

THIS DOCUMENT IS BEING TRANSMITTED FROM:

**Comstock Library of Entomology
Cornell University**

If you are requesting a resend, please Ariel this sheet to: 128.253.38.64

RLIN or OCLC ILL Number _____

RLIN or OCLC Symbol _____

Pages to Resend _____

Reason _____

Comstock Library of Entomology
Cornell University

Phone: 607-255-3265

Ariel: 128.253.38.64

X-PH: V4.1@adminapp
To: entomologylib@cornell.edu
From: "Mann Interlibrary Services" <mill@cornell.edu>
Subject: Lending Request from Mann ILL, TN502169
Date: Mon, 12 Feb 2007 12:43:35 GMT

The borrower has provided page range: 257-298 - can you find it?

COPY REQUEST for Mann LENDING -
TN: 502169

INTERLIBRARY LENDING SERVICES - ALBERT R. MANN LIBRARY

The following copy has been requested:

Reference no: 27343152
Patron: KERR, PETER H. (Faculty [dds]) Ariel or Email Address: 169.237.75.50
Borrowing Name: Mann Library Borrowing Symbol: CUV

Call No: QL483.C5 L66X 1998 -
Journal/Title: Longwang Shan kun chong / Wu Hong zhu bian
Volume: Issue:
Date: 1998

Article: Diptera; Diadocidiidae, Keroplatidae adn [and] M
Author: Wu, Hong H\
Pages: 257-298

1.) If there is an IP address or email address indicated above, please scan and send the copy directly to the customer if possible. Remember to fill in the reference number and patron name

Use the "Scanning Techniques" document for scanning details and the "Ariel Problems" document if the file does not transfer.

2.) If there is no IP address or email address, scan the material and Ariel to Mann ILL.

3.) If the item cannot be copied at Ent, please do the following:

1. Place an orange MANN-ENT direction flyer in the material.
2. Place a circ review on the item in Voyager.
3. Add a note in Voyager stating "Sent to MANN ILS, TN _____" (fill in the transaction number)

Thank you! This request has been forwarded from Mann ILL by bb75
Interlibrary Loan Services
Albert R. Mann Library
Cornell University
Ithaca, NY 14853
607-255-7754

双翅目:张翅菌蚊科 扁角菌蚊科 菌蚊科

吴 鸿

何俊华

(浙江林学院 临安 311300) (浙江农业大学 杭州 310029)

杨集昆

(中国农业大学 北京 100094)

菌蚊又称草蚊,体细长小型,中等活泼。体长2.2~13.3 mm。头部扁平,胸部侧扁至扁平。翅脉趋于减少,翅膜密被微毛。足基节延长而粗壮,腿节中等发达;胫节细长,多具长而强的端距。腹部雄6~8节,雌7节。

菌蚊有重要经济意义。幼虫以真菌为食,噬食菌丝体或蛀食子实体而致菌类生长受阻或死亡,影响菇类的品质和产量。成虫传播病原杂菌、螨类和线虫等,是野生和栽培食用菌药用菌的大敌。

全世界已知近4000余种,我国已知5科21属184种。本文报道浙江省龙王山自然保护区菌蚊3科11属89种,其中有45个新种(本文记述33个新种,其余12个新种另文发表)和8个中国新纪录种。新种模式标本分存于浙江林学院昆虫标本室和中国农业大学昆虫标本馆。

一 张翅菌蚊科 Diadocididae

1 中华张翅菌蚊 *Diadocidia sinica* Wu, 1995

分布:浙江安吉龙王山,浙江。

二 扁角菌蚊科 Keroplatidae

2 雅长角菌蚊 *Macrocera elegantula* Coher, 1988

分布:浙江安吉龙王山,浙江、福建;印度。

3 新长角菌蚊 *Macrocera neobrunnea* Wu et Yang, 1993

分布:浙江安吉龙王山,浙江、福建、贵州。

三 菌蚊科 Mycetophilidae

4 华丽真菌蚊 *Mycomya aureola* Wu, 1995

分布:浙江安吉龙王山,浙江。

5 康福真菌蚊 *Mycomya confusa* Vaisanen, 1979 中国新纪录

寄主: *Leccinum scabrum* (Fr.)。

分布: 浙江安吉龙王山; 欧洲。

6 习见真菌蚊 *Mycomya copicusa* Wu, sp. nov. (另文发表)

正模♂, 副模 8♂♂, 浙江安吉龙王山。

7 缺齿真菌蚊 *Mycomya edentata* Wu, sp. nov. (另文发表)

正模♂, 浙江安吉龙王山。

8 隐真菌蚊 *Mycomya occultans* (Winnertz, 1863)

寄主: 平菇、香菇等。

分布: 浙江安吉龙王山, 山西、浙江、贵州; 日本, 俄罗斯, 印度, 欧洲。

9 侧齿真菌蚊 *Mycomya odontoda* Yang et Wu, 1988

分布: 浙江安吉龙王山, 福建、贵州。

10 溪边真菌蚊 *Mycomya rivalisa* Wu, sp. nov. (另文发表)

正模♂, 配模♀, 副模 2♂♂, 8♀♀, 浙江安吉龙王山。

11 似谢真菌蚊 *Mycomya shermatoda* Yang et Wu, 1989

分布: 浙江安吉龙王山, 吉林。

12 武夷真菌蚊 *Mycomya wuyishana* Yang et Wu, 1993

分布: 浙江安吉龙王山, 浙江、福建。

13 挂墩缺室菌蚊 *Vecella guadunana* Wu et Yang, 1996

分布: 浙江安吉龙王山, 浙江、福建。

14 弯曲新菌蚊 *Neoempheria cyphia* Wu et Yang, 1995

分布: 浙江安吉龙王山, 浙江。

15 多刺新菌蚊 *Neoempheria echinata* Wu et Yang, 1995

分布: 浙江安吉龙王山, 浙江。

16 分支新菌蚊 *Neoempheria merogena* Yang et Wu, 1993

分布: 浙江安吉龙王山, 浙江、福建。

17 山居新菌蚊 *Neoempheria*

正模♂, 配模♀, 副

18 斑翅新菌蚊 *Neoempheria*

分布: 浙江安吉龙王山

19 具毛新菌蚊 *Neoempheria*

正模♂, 浙江安吉龙王山

20 中华新菌蚊 *Neoempheria*

寄主: 平菇、蘑菇等

分布: 浙江安吉龙王山

21 锥形新菌蚊 *Neoempheria*

分布: 浙江安吉龙王山

22 三叶新菌蚊 *Neoempheria*

分布: 浙江安吉龙王山

23 开叉粘菌蚊 *Sciophila*

分布: 浙江安吉龙王山

24 北美粘菌蚊 *Sciophila*

分布: 浙江安吉龙王山

25 针尾滑菌蚊 *Leia*

正模♂, 配模♀, 副

26 长尾滑菌蚊 *Leia*

正模♂, 配模♀, 副

27 龙王山滑菌蚊 *Leia*

正模♂, 副模 1♂, 副

28 联合布菌蚊 *Boletina*

分布: 浙江安吉龙王山

29 伪腹布菌蚊 *Boletina*

分布: 浙江安吉龙王山

- 17 山居新菌蚊 *Neoempheria monticola* Wu, sp. nov. (另文发表)
正模♂,配模♀,副模3♂♂,浙江安吉龙王山。
- 18 斑翅新菌蚊 *Neoempheria pictipennis* Haliday, 1833
分布:浙江安吉龙王山,北京、浙江;日本,前苏联,欧洲。
- 19 具毛新菌蚊 *Neoempheria setulosa* Wu, sp. nov. (另文发表)
正模♂,浙江安吉龙王山。
- 20 中华新菌蚊 *Neoempheria sinica* Wu et Yang, 1993
寄主:平菇、蘑菇等。
分布:浙江安吉龙王山,北京、河北、山西、上海、浙江、广西、贵州。
- 21 锥形新菌蚊 *Neoempheria subulata* Wu et Yang, 1995
分布:浙江安吉龙王山,浙江。
- 22 三叶新菌蚊 *Neoempheria triloba* Wu et Yang, 1995
分布:浙江安吉龙王山,浙江。
- 23 开叉粘菌蚊 *Sciophila lobula* Wu, 1995
分布:浙江安吉龙王山,浙江。
- 24 北美粘菌蚊 *Sciophila modesta* Zaitzev, 1982 中国新纪录
分布:浙江安吉龙王山;加拿大,美国。
- 25 针尾滑菌蚊 *Leia aculeolusa* Wu, sp. nov. (另文发表)
正模♂,配模♀,副模6♂♂,1♀,浙江安吉龙王山。
- 26 长尾滑菌蚊 *Leia ampulliforma* Wu, sp. nov. (另文发表)
正模♂,配模♀,副模1♂,浙江安吉龙王山。
- 27 龙王山滑菌蚊 *Leia longwangshana* Wu, sp. nov. (另文发表)
正模♂,副模1♂,浙江安吉龙王山。
- 28 联合布菌蚊 *Boletina conjuncta* Sasakawa et Kimura, 1974 中国新纪录
分布:浙江安吉龙王山;日本。
- 29 伪腹布菌蚊 *Boletina pseudoventralis* Sasakawa et Kimura, 1974 中国新纪录
分布:浙江安吉龙王山;日本。

- 30 安吉巧菌蚊 *Phronia anjiana* Wu et Yang, sp. nov. (另文发表)
正模♂, 浙江安吉龙王山。
- 31 片尾巧菌蚊 *Phronia blattocauda* Wu et Yang, 1995
分布: 浙江安吉龙王山, 浙江。
- 32 指突巧菌蚊 *Phronia dactylina* Wu et Yang, 1992
分布: 浙江安吉龙王山, 浙江。
- 33 栖灌巧菌蚊 *Phronia lochmocola* Wu et Yang, sp. nov. (另文发表)
正模♂, 浙江安吉龙王山。
- 34 莫干巧菌蚊 *Phronia moganshanana* Wu et Yang, 1992
分布: 浙江安吉龙王山, 浙江。
- 35 光腹巧菌蚊 *Phronia nitidiventris* V.D. Wulp, 1858
分布: 浙江安吉龙王山, 浙江; 欧洲。
- 36 剑状巧菌蚊 *Phronia phasgana* Wu et Yang, 1992
分布: 浙江安吉龙王山, 浙江。
- 37 三枝巧菌蚊 *Phronia triloba* Wu et Yang, sp. nov. (另文发表)
正模♂, 浙江安吉龙王山。
- 38 武当巧菌蚊 *Phronia wudangana* Yang et Wu, 1989
分布: 浙江安吉龙王山, 浙江、湖北。
- 39 无斑菌蚊, 新种 *Mycetophila absqua* Wu et He, sp. nov. (图 1~2)

雄: 翅长 2.5 mm。头部须和口器褐黄色, 须第 3 节最宽; 头后部深褐色; 触角柄节、梗节和第 1 鞭节基 1/3 黄色, 其余褐色。前胸前侧片具 3 根长刚毛; 中胸盾片深褐色; 中胸上前侧片长约为宽的 0.8 倍; 小盾片深褐色, 具 4 根长刚毛; 中胸后侧片具 3 根长刚毛。翅黄色透明, 无斑纹; C 脉终于 R_5 脉; 横脉 r-m 略长于 M 脉主干; tb 脉下面具 1 长毛。平衡棒黄色。足黄色, 后腿节端 1/4 褐色; 中胫节具 5d, 1a-d, 2a, 3v, 2p; 后胫节具 7d, 6a, 4p。后基节具弱短后鬃, 亚端鬃直长且短于基节直径。腹部背板深褐色; 腹板褐色。外生殖器淡褐色。

正模♂, 浙江安吉龙王山, 800~1300 m, 1995-07-16, 吴鸿采。

新种与北美产的 *M. alberta* Curran, 1927 略相似, 但后者的生殖刺腹突和生殖刺背突的构造明显不同, 可以区别。

- 40 等长菌蚊, 新种 *Mycetophila aequilonga* Wu et He, sp. nov. (图 3~4)

雄: 翅长 2.9 mm。

3 节最宽; 头后部暗褐色; 触角柄节、梗节和第 1 鞭节基部黄色, 其余褐色。前胸前侧片具 3 根长刚毛; 中胸盾片暗褐色, 长约为宽的 0.8 倍; 小盾片深褐色, 具 4 根长刚毛; 中胸后侧片具 3 根长刚毛。翅黄色透明, 褐色中斑存在; 亚端鬃直长且短于基节直径, 向后伸达 M_2 脉; 横脉 r-m 略长于 M 脉主干; tb 脉下面具 1 长毛。足黄色, 后腿节端部及中胫节具 5d, 1a-d, 3a, 4v, 4p。腹部背板和腹板深褐色。



图 3-4 等长菌蚊, 新种 *Mycetophila aequilonga* Wu et He, sp. nov. 3. 雄外生殖器, 腹视 4. 生殖器, 背视

中胸盾片黑褐色; 中胸上前侧片长约为宽的 0.8 倍; 小盾片黄褐色, 具 4 根长刚毛; 中胸后侧片具 3 根长刚毛。翅黄色透明, 褐色中斑存在; 亚端鬃直长且短于基节直径, 向后伸达 M_2 脉; 横脉 r-m 略长于 M 脉主干; tb 脉下面具 1 长毛。足黄色, 后腿节背面

40 等长菌蚊, 新种 *Mycetophila aequilonga* Wu et He, sp. nov. (图 3~4)

雄:翅长 2.9 mm。头部须和口器黄色,须第 3 节最宽;头后部暗褐色;触角柄节、梗节和第 1 鞭节基部黄色,其余褐色。前胸前侧片具 3 根长刚毛;中胸盾片暗褐色,肩角黄色;中胸上前侧片长约为宽的 0.8 倍;小盾片黄色,两侧褐色,具 4 根长刚毛;中胸后侧片具 4 根长刚毛。翅黄色透明,褐色中斑存在;亚端褐斑起自 R_1 脉至 R_5 脉端之间,向后伸达 M_2 脉;C 脉终于 R_5 脉;横脉 r-m 略长于 M 脉主干;tb 脉无长毛。平衡棒黄白色。足黄色,后腿节端部及中、后胫节端部褐色;中胫节具 5d, 1a-d, 3a, 4v, 4p;后胫节具 6d, 7a, 3p。后基节具弱短后鬃,亚端鬃直长且短于基节直径。腹部背板和腹板深褐色。外生殖器褐色。

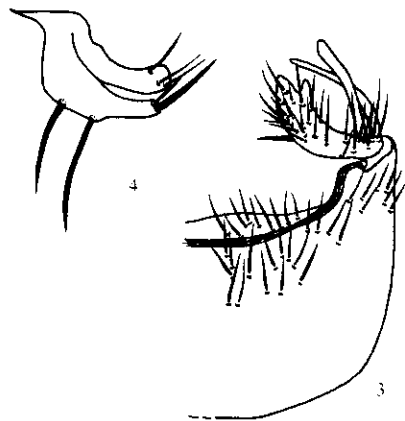


图 3-4 等长菌蚊, 新种 *Mycetophila aequilonga* Wu et He, sp. nov.
3. 雄外生殖器, 腹视 4. 生殖刺背突, 侧背视

中胸盾片黑褐色;中胸上前侧片长约为宽的 0.8 倍;小盾片黄褐色,具 4 根长刚毛;中胸后侧片具 3 根长刚毛。翅黄色透明,褐色中斑存在;C 脉伸过 R_5 脉端约为 R_5 脉至 M_1 脉间距的 1/5;Cu 脉又在 M 脉叉略外;横脉 r-m 长约为 M 脉主干的 1.1~1.9 倍;tb 脉下面具 7~9 长毛。平衡棒黄色。足黄色,后腿节背面及端部褐色;中胫节具

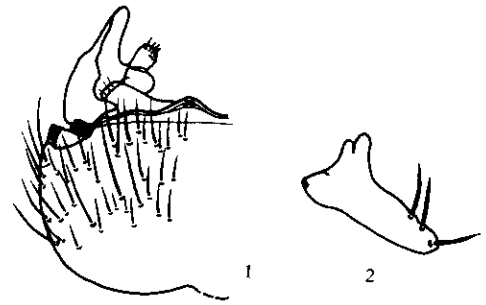


图 1-2 无斑菌蚊, 新种 *Mycetophila absqua* Wu et He, sp. nov.

1. 雄外生殖器, 腹视 2. 生殖刺背突, 侧背视

后基节具弱短后鬃,亚端鬃直长且短于基节直径。腹部背板和腹板深褐色。外生殖器褐色。

正模♂, 浙江安吉龙王山, 1996-05-12, 吴鸿采。

新种与全北区广布的 *M. bimaculata* (Fabricius, 1804) 略相似,但后者的生殖刺腹突和生殖刺背突构造完全不同,可以区别。

41 艾尔菌蚊 *Mycetophila alberta* Curran, 1927 中国新纪录

分布:浙江安吉龙王山;北美洲。

42 环状菌蚊, 新种 *Mycetophila annulara* Wu et He, sp. nov. (图 5~6)

雄:翅长 2.4~2.7 mm。头部须和口器黄色,须第 3 节最宽;头

后部褐色;触角淡褐色。前胸前侧片具 3 根长刚毛;

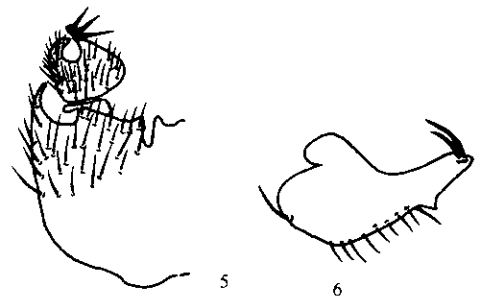


图 5-6 环状菌蚊, 新种 *Mycetophila annulara* Wu et He, sp. nov.

5. 雄外生殖器, 腹视 6. 生殖刺背突, 侧背视

5~6d, 3a, 3v; 后胫节具 6d, 6~8a。腹部背板深褐色; 腹板褐色。外生殖器淡褐色。

正模♂, 福建武夷山挂墩, 1991-10-07, 吴鸿采。副模 3♂♂, 浙江安吉龙王山, 1995-07-20, 吴鸿采。

新种与胡形菌蚊 *M. sicyoideusa* sp. nov. 近似, 但后者的生殖刺腹突末端几乎直且无粗黑后缘齿, 可以区别。

43 光盾菌蚊, 新种 *Mycetophila calvuscuta* Wu et He, sp. nov. (图 7~8)



图 7~8 光盾菌蚊, 新种 *Mycetophila calvuscuta* Wu et He, sp. nov.

7. 雄外生殖器, 腹视 8. 生殖刺背突, 侧背视

雄: 翅长 2.6~2.8 mm。头部须和口器褐黄色, 须第 3 节最宽; 头后部黑褐色; 触角柄节、梗节和第 1 鞭节基半部黄色, 其余褐色。前胸前侧片具 3 根长刚毛; 中胸盾片黑褐色, 肩角黄色; 中胸上前侧片长约为宽的 1.1 倍; 小盾片黑褐色, 具 4 根长刚毛; 中胸后侧片具 5 根长刚毛。翅黄色透明, 褐色中斑存在; 亚端褐斑起自 R_1 脉至 R_5 脉端, 止于 M_1 脉端; C 脉终于 R_5 脉; 横脉 r-m 略短于 M 脉主干; tb 脉下面具 3 长毛。平衡棒黄色。足黄色, 中、后腿节背面及后腿节端部黑褐色; 中胫节具 5d, 3a, 3v, 1p; 后胫节具 5d, 7a。后基节具弱短后鬃, 亚端鬃直长且短于基节直径。腹部背板暗褐色, 第 6 节后缘宽黄色; 腹板淡褐色。外生殖器淡褐色。

正模♂, 浙江安吉龙王山, 1996-06-14, 吴鸿采。副模 1♂, 浙江开化古田山, 1992-10-29, 吴鸿采。

新种与分布于北美的 *M. vesca* (Laffoon, 1957) 略相似, 但后者的翅无斑纹, 生殖刺腹突形状不同且密被长刚毛, 外生殖器的其他构造亦明显不同, 容易区别。

44 类尾菌蚊, 新种 *Mycetophila caudatusaceus* Wu et He, sp. nov. (图 9~10)

雄: 翅长 2.6~3.3 mm。头部须和口器黄色, 须第 3 节最宽; 头后部褐色; 触角柄节、梗节和第 1、2 鞭节黄色, 其余淡褐色。前胸前侧片具 3 根长刚毛; 中胸盾片褐至暗褐色, 肩角黄色; 中胸上前侧片长约等于宽; 小盾片褐色, 具 4 根长刚毛; 中胸后侧片具 3~4 根长刚毛。翅黄色透明, 翅脉褐色; 褐色中斑存在, 较小; 亚端褐斑起自 R_1 脉端, 向后伸 M_1 脉之前; C 脉终于 R_5 脉; 横脉 r-m 略长于 M 脉主干; tb 脉下面具 0~1 长毛。平衡棒黄色。足黄色, 后腿节背面及端 1/5 褐色; 中、后胫节端部褐色; 中胫节具 5d, 3a, 2v, 2p; 后胫节具 5d, 7a, 1p。后基节无弱短后鬃, 亚端鬃直长且短于基节直径。腹部背板褐色; 腹板色稍浅。外生殖器黄色。

正模♂, 浙江安吉龙王山, 800~1200 m, 1996-07-20, 吴鸿采。副模 1♂, 浙江安吉龙王山, 800~1300 m, 1995-07-16, 吴鸿采; 4♂♂, 浙江开化古田山, 500m, 1992-10-28, 邓一飞采; 2♂♂, 浙江开化古田山, 500m, 1992-10-28, 吴鸿采。



图 9~10

新种与分布于全北状明显不同, 可以区别。

45 圆盾菌蚊, 新种 *Mycetophila*

雄: 翅长 2.9 mm。色, 须第 3 节最宽; 头后节、梗节和第 1 鞭节基 1 色。前胸前侧片具 3 根黑褐色; 中胸上前侧片长小盾片黑褐色, 具 4 根长具 3 根长刚毛。翅黄色终于 R_5 脉; 横脉 r-m 长无长毛。平衡棒黄色。1/5 黑褐色; 中腿节端部色; 中胫节具 5d, 1a-d, 3 6d, 7a, 2p。后基节具弱长且短于基节直径。腹板褐色。外生殖器淡褐

正模♂, 浙江安吉龙王山, 吴鸿采。

山, 1995-07-

平直且无粗黑

。头部须和口器后部黑褐色; 基半部黄色, 其具长刚毛; 中胸上前侧片长约色, 具4根长刚毛。翅黄色透斑起自 R_1 脉至 R_5 脉; 横脉下面具3长中、后腿节背面具5d, 3a, 3v, 节具弱短后鬃, 径。腹部背板暗腹板淡褐色。外

山, 1996-06-14,

斑纹, 生殖刺腹突

9~10)

色; 触角柄节、梗节暗褐色, 肩角黄色; 具长刚毛。翅黄色之前; C脉终于 R_5 脉; 后腿节背面及1p。后基节无弱短黄色。

♂, 浙江安吉龙王山, 1995-07-16, 2-10-28, 邓一飞采;



图9~10 类尾菌蚊, 新种 *Mycetophila caudatusaceus* Wu et He, sp. nov.
9. 雄外生殖器, 腹视 10. 尾须, 侧视

新种与分布于全北区的 *M. caudata* Staeger, 1840 相近, 但后者的生殖刺腹突和背突形状明显不同, 可以区别。

45 圆盾菌蚊, 新种 *Mycetophila clypeata* Wu et He, sp. nov. (图11~12)

雄: 翅长 2.9 mm。头部须和口器黄色, 须第3节最宽; 头后部黑褐色; 触角柄节、梗节和第1鞭节基1/3黄褐色, 其余褐色。前胸前侧片具3根长刚毛; 中胸盾片黑褐色; 中胸上前侧片长约为宽的1.2倍; 小盾片黑褐色, 具4根长刚毛; 中胸后侧片具3根长刚毛。翅黄色透明, 无斑纹; C脉终于 R_5 脉; 横脉 r-m 长于 M 脉主干; tb 脉无长毛。平衡棒黄色。足黄色, 后腿节端1/5黑褐色; 中腿节端部及后胫节端部褐色; 中胫节具5d, 1a-d, 3a, 3v, 3p; 后胫节具6d, 7a, 2p。后基节具弱短后鬃, 亚端鬃直长且短于基节直径。腹部背板深褐色; 腹板褐色。外生殖器淡褐色。

正模♂, 浙江安吉龙王山, 1995-07-16, 吴鸿采。

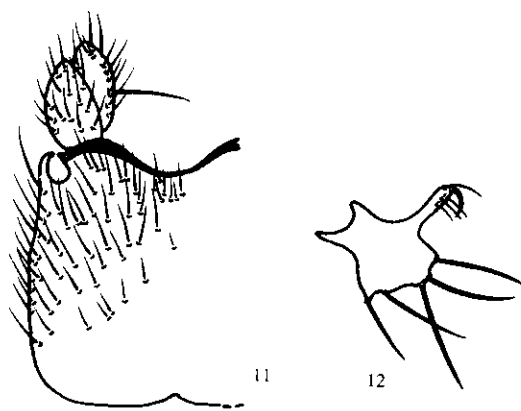


图11~12 圆盾菌蚊, 新种 *Mycetophila clypeata* Wu et He, sp. nov.

11. 雄外生殖器, 腹视 12. 生殖刺背突, 侧背视

新种与分布于全北区的 *M. mitis* Johannsen, 1912 略相似, 但后者的翅具中斑, 生殖刺背突形状也明显不同, 容易区别。

46 弯尾菌蚊 *Mycetophila curvicaudata* Wu, 1997

分布: 浙江安吉龙王山, 浙江、湖北。

47 镰状菌蚊, 新种 *Mycetophila drepana* Wu et He, sp. nov. (图 13~14)

雄: 翅长 4.2 mm。头部须和口器黄色, 须第 3 节最宽; 头后部褐色; 触角柄节、梗节和第 1 鞭节基部黄色, 其余褐色。前胸前侧片具 4 根长刚毛; 中胸盾片暗褐色, 肩角黄色; 中胸上前侧片长约为宽的 1.2 倍; 小盾片黄色, 两侧有小褐斑, 具 4 根长刚毛; 中胸后侧片具 4 根长刚毛。翅黄色透明, 褐色中斑存在; 亚端褐斑小而不明显, 位于 R_1 脉端的后方; C 脉终于 R_5 脉; 横脉 $r-m$ 略长于 M 脉主干; tb 脉下面具 3 长毛。平衡棒黄色。足黄色, 中、后腿节端部及中、后胫节端部褐色; 中胫节具 6d, 1a-d, 3a, 3v, 4p; 后胫节具 5d(并间 12 弱 d), 8a, 5p。后基节具弱短后鬃, 亚端鬃直长且短于基节直径。腹部背板和腹板深褐色。外生殖器淡褐色。

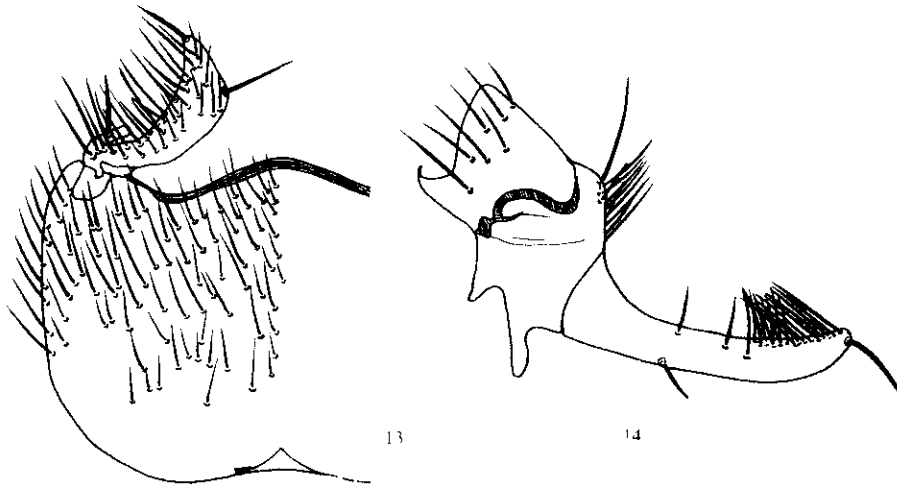


图 13~14 镰状菌蚊, 新种 *Mycetophila drepana* Wu et He, sp. nov.

13. 雄外生殖器, 腹视 14. 生殖刺背突, 背背视

正模♂, 浙江安吉龙王山, 1100 m, 1996-06-14, 吴鸿采。1♂, 浙江德清莫干山剑池, 1992-04-18, 吴鸿采。

新种与北美产的 *M. lenta* Johannsen, 1912 略相似, 但后者的生殖刺腹突具 1 粗大端齿, 生殖刺背突端部无密生的长刚毛, 容易区别。

48 膝弯菌蚊, 新种 *Mycetophila genuflexuosa* Wu et He, sp. nov. (图 15~16)

雄: 2.6~3.1 mm。头部须和口器褐黄色, 须第 3 节最宽; 头后部深褐色; 触角柄节、梗节和第 1 鞭节基 1/3 黄色, 其余褐色。前胸前侧片具 3 根长刚毛; 中胸盾片深褐色, 肩角黄色; 中胸上前侧片长约等于宽; 小盾片黄色, 两侧各有 1 褐色大斑, 具 4 根长刚毛; 中胸后侧片具 4 根

长刚毛。翅黄色透明, 褐斑起自 R_1 脉至 R_5 脉; M_2 脉; C 脉终于 R_5 脉; 横脉主干的 2.0 倍; tb 脉褐色。足黄色, 中、后腿节褐色; 中胫节具 6d, 1a-d, 5~6d, 7a, 2p。后基节直长略短于基节直径。腹部背板和腹板淡褐色。外生殖器淡褐色。

正模♂, 浙江安吉龙王山, 1995-10-17, 吴鸿采。2♂♂, 浙江安吉龙王山, 1995-07-14, 吴鸿采; 1♂, 浙江安吉龙王山, 1100 m, 1995-07-16, 吴鸿采; 1♂, 浙江安吉龙王山, 1100 m, 1995-07-16, 吴鸿采。

新种与分布于全北区的 *M. curvicaudata* Wu, 1997 略相似, 但后者的生殖刺腹突内具 1 粗大端齿, 生殖刺背突具 1 粗大端齿。

49 光滑菌蚊, 新种 *Mycetophila glabra* Wu et He, sp. nov. (图 17~18)



图 17~18 光滑菌蚊, 新种 *Mycetophila glabra* Wu et He, sp. nov.

17. 雄外生殖器, 腹视

8a, 3p。后基节具弱短后鬃, 亚端鬃直长且短于基节直径。腹部背板和腹板淡褐色。外生殖器淡褐色。

正模♂, 浙江安吉龙王山, 1995-10-17, 吴鸿采。新种的生殖基节后具 1 弱短后鬃, 亚端鬃直长且短于基节直径。

50 雅致菌蚊, 新种 *Mycetophila elegantissima* Wu et He, sp. nov. (图 19~20)

雄: 翅长 3.1 mm。

者的翅具中斑,生殖刺长刚毛。

翅黄色透明,褐色中斑存在;亚端褐斑起自 R_1 脉至 R_5 脉端 $2/3$ 处,向后达 M_2 脉;C脉终于 R_5 脉;横脉 r-m 长约为 M 脉主干的 2.0 倍;tb 脉无长毛。平衡棒黄色。足黄色,中、后腿节端部及胫节端部褐色;中胫节具 6d, 1a-d, 3a, 3v, 4p;后胫节具 5-6d, 7a, 2p。后基节具弱短后鬃,亚端鬃直长略短于基节直径。腹部背板褐色;腹板淡褐色。外生殖器淡褐色。

13~14)

触角柄节、梗节和第 1、2 鞭节黄色;中胸上前侧片具 4 根长刚毛;中胸后侧片具 4 根长刚毛;C 脉终于 R_5 脉;横脉 r-m 为 M 脉主干的 2.0 倍;tb 脉无长毛。平衡棒黄白色。足黄色,后腿节端部及中、后胫节具 11d, 8a, 3p。后基节具弱短后鬃,亚端鬃直长且短于基节直径。腹部背部褐色;腹板黄至黄褐色。外生殖器淡褐色。

正模♂,浙江安吉龙王山,450~500 m,1995-10-17,吴鸿采。副模 1♂,浙江安吉龙王山,500~600 m,1995-07-13,吴鸿采;2♂♂,浙江安吉龙王山,400~500 m,1995-07-14,吴鸿采;1♂,浙江安吉龙王山,1100 m,1995-07-16,吴鸿采;1♂,浙江安吉龙王山,1100 m,1996-06-14,吴鸿采。

新种与分布于全北区的 *M. dentata* (Lundstrom, 1913) 略相似,但后者的生殖刺腹突不呈弯 C 形,生殖刺腹突内侧具 4 根宽扁长毛,容易区别。

49 光滑菌蚊,新种 *Mycetophila glabra* Wu et He, sp. nov. (图 17~18)

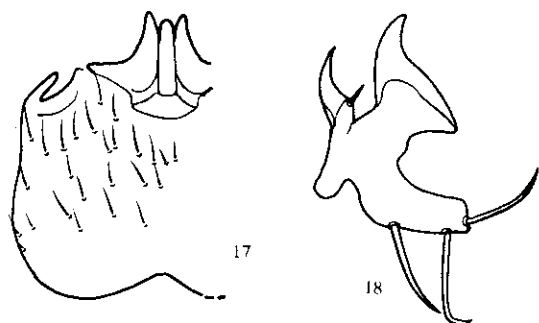


图 17~18 光滑菌蚊,新种 *Mycetophila glabra* Wu et He, sp. nov.

17. 雄外生殖器,腹视 18. 生殖刺背突,侧背视

雄:翅长 3.4 mm。头部须和口器黄色,须第 3 节最宽;头后部深褐色;触角柄节、梗节和第 1、2 鞭节黄色,其余褐色。前胸前侧片具 3 根长刚毛;中胸盾片暗褐色;中胸上前侧片长约等于宽;小盾片黄色,两侧各有 1 褐色大斑,具 4 根长刚毛;中胸后侧片具 4 根长刚毛。翅黄色透明,褐色中斑存在;亚端褐斑起自 R_1 至 R_5 脉端 $1/2$ 处,向后达 M_1 脉;C 脉终于 R_5 脉;横脉 r-m 为 M 脉主干的 2.0 倍;tb 脉无长毛。平衡棒黄白色。足黄色,后腿节端 $1/4$ 褐色;中胫节具 6d, 1a-d, 3a, 3v, 4p;后胫节具 11d, 8a, 3p。后基节具弱短后鬃,亚端鬃直长且短于基节直径。腹部背部褐色;腹板黄至黄褐色。外生殖器淡褐色。

正模♂,浙江安吉龙王山,490~700 m,1995-10-18,吴鸿采。

新种的生殖基节后缘和生殖刺腹突构造明显与本属已知种不同,容易区别。

50 雅致菌蚊,新种 *Mycetophila grata* Wu et He, sp. nov. (图 19~20)

雄:翅长 3.1 mm。头部须和口器褐黄色,须第 3 节最宽;头后部深褐色;触角柄节、梗节

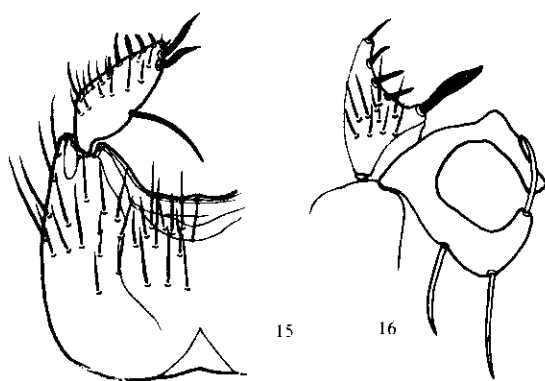


图 15~16 膝弯菌蚊,新种 *Mycetophila genuflexuosa* Wu et He, sp. nov.

15. 雄外生殖器,腹视 16. 生殖刺背突,侧背视

德清莫下山剑池,

突具 1 粗大端齿,

5~16)

触角柄节、梗节黄色,肩角黄色;中胸后侧片具 4 根

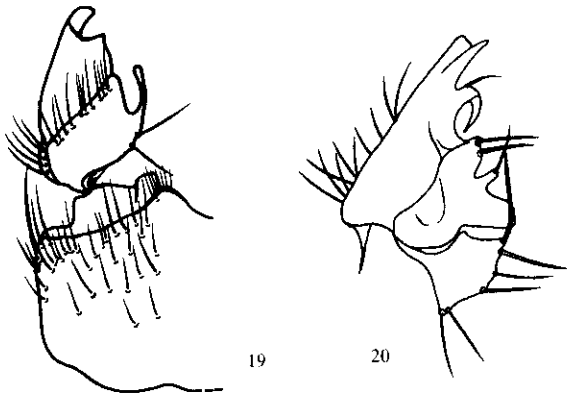


图 19~20 雅致菌蚊, 新种 *Mycetophila grata* Wu et He, sp. nov.

19. 雄外生殖器, 腹视 20. 生殖刺背突, 侧背视

和刺背突构造明显不同, 容易区别。

51 粗壮菌蚊 *Mycetophila fortisa* Wu, 1997

分布: 浙江安吉龙王山, 浙江。

52 扭曲菌蚊, 新种 *Mycetophila intortusa* Wu et He, sp. nov. (图 21~23)

雄: 翅长 2.3~2.9 mm。头部须和口器黄色, 须第 3 节最宽; 头后部暗褐色; 触角柄节、梗节和第 1 鞭节黄色, 其余褐色。前胸前侧片具 3 根长刚毛; 中胸盾片深褐色, 肩角黄色; 中胸上前侧片长约等于宽; 小盾片褐色, 具 4 根长刚毛; 中胸后侧片具 3 根长刚毛。翅黄色透明, 褐色中斑存在; C 脉终于 R_5 脉; 横脉 r-m 略短于 M 脉主干; tb 脉下面具 2 长毛。平衡棒黄色。足黄色, 后腿节端部褐色; 中胫节具 4d, 1a-d, 2a, 3v, 2p; 后胫节具 7d, 3a-d, 7d, 2p。后基节具弱短后鬃, 亚端鬃直长且短于基节直径。腹部背板褐色; 腹板色稍浅。外生殖器褐色。

正模♂, 浙江安吉龙王山, 400~500 m, 1995-07-14, 吴鸿采。副模 2♂♂, 同正模; 13♂♂, 浙江安吉龙王山, 800~1300 m, 1995-07-16, 吴鸿采; 1♂, 浙江德清莫干山, 1992-04-18, 吴鸿采; 1♂, 浙江江山淤头, 1993-04-20, 周章恩采; 1♂, 湖北武当山, 1984-05-29, 杨集昆采。

新种与分布于浙江龙王山、莫干山的 *M. paradisa* sp. nov. 相似, 但后者的色型不同, 尾须不扭曲, 生殖刺构造也不同, 可以区别。

53 宽毛菌蚊, 新种 *Mycetophila latichaeta* Wu et He, sp. nov. (图 24~25)

雄: 3.3~4.2 mm。头部须黄色, 第 3 节最宽; 口器黄褐色; 头后部暗褐色; 触角柄节、梗节和第 1 或 1~2 鞭节黄色, 其余褐色。前胸前侧片具 4 根长刚毛; 中胸盾片暗褐色, 肩角黄色; 中胸上前侧片长约为宽的 0.8 倍; 小盾片黄色, 两侧各有 1 褐色大斑, 具 4 根长刚毛; 中胸后侧

和第 1 鞭节基部黄色, 其余褐色。前胸前侧片具 3 根长刚毛; 中胸盾片褐黄色, 具 3 条褐色宽纵带; 中胸上前侧片长约等于宽; 小盾片黄色, 两侧褐色, 具 4 根长刚毛; 中胸后侧片具 3 根长刚毛。翅黄色透明, 褐色中斑存在; C 脉终于 R_5 脉; 横脉 r-m 长约为 M 脉主干的 2/3; tb 脉下面具 5~6 长毛。平衡棒黄色。足黄色, 后基节端部褐色; 中胫节具 5d, 2a, 2v, 2p; 后胫节具 6d, 5a, 2p。后基节具弱短后鬃, 亚端鬃直长且短于基节直径。腹部背板深褐色; 腹板色稍浅。外生殖器淡褐色。

正模♂, 浙江安吉龙王山, 1300 m, 1996-05-13, 吴鸿采。

新种与美国产的 *M. alata* Guthrie, 1917 略相似, 但后者的生殖刺腹突和生殖



图 21
21

片具 5 根长刚毛。翅黄色透明, 褐色中斑存在; M_2 脉; C 脉终于 R_5 脉; 横脉 r-m 长约为 M 脉主干的 2/3; tb 脉下面具 5~6 长毛。平衡棒黄色。足黄色, 后腿节端部褐色; 中胫节具 5d, 2a, 2v, 2p; 后胫节具 6d, 5a, 2p。后基节具弱短后鬃, 亚端鬃直长且短于基节直径。腹部背板深褐色; 腹板色稍浅。外生殖器褐色。



图 24

正模♂, 浙江安吉龙王山, 400~500 m, 1995-07-14, 吴鸿采。副模 2♂♂, 浙江安吉龙王山, 800~1300 m, 1995-07-16, 吴鸿采; 1♂, 浙江德清莫干山, 1992-04-18, 吴鸿采; 1♂, 浙江江山淤头, 1993-04-20, 周章恩采; 1♂, 湖北武当山, 1984-05-29, 杨集昆采。

色。前胸前
褐黄色,具3
长约等于宽;
根长刚毛;中
黄色透明,褐
脉 r-m 长约
具5~6长
基节端部褐
胫节具6d,
端鬃直长且
褐色;腹板色

1, 1 300 m,

ta Guthrie,
腹突和生殖

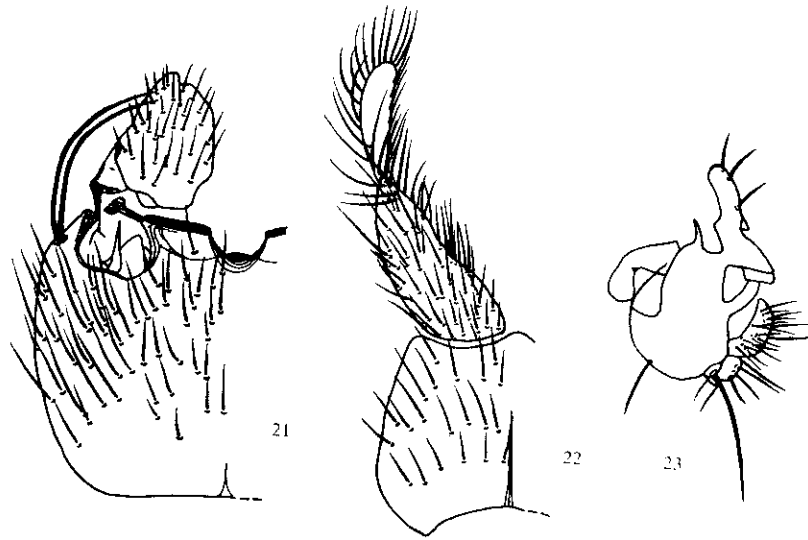


图 21~23 扭曲菌蚊,新种 *Mycetophila intortusa* Wu et He, sp. nov.

21. 雄外生殖器,腹视 22. 尾须,背视 23. 生殖刺背突,侧背视

片具5根长刚毛。翅黄色透明,褐色中斑存在;亚端褐斑起自 R_1 脉至 R_5 脉端,向后渐狭,达 M_2 脉; C 脉终于 R_5 脉;横脉 r-m 长为 M 脉主干的 2.0 倍;tb 脉下面具 0~1 长毛。平衡棒黄白色。足黄色,后腿节端部及中、后胫节端部褐色;中胫节具 6d, 1a-d, 3a, 3v, 3p;后胫节具 12d, 7a, 4p。后基节具弱短后鬃,亚端鬃直长且短于基节直径。腹部背板深褐色;腹板褐色。外生殖器褐色。

扁角柄节、梗
黄色;中胸上
色透明,褐色
棒黄色。足
后基节具弱

,同正模;
11, 1992-04-
29, 杨集昆

型不同,尾须

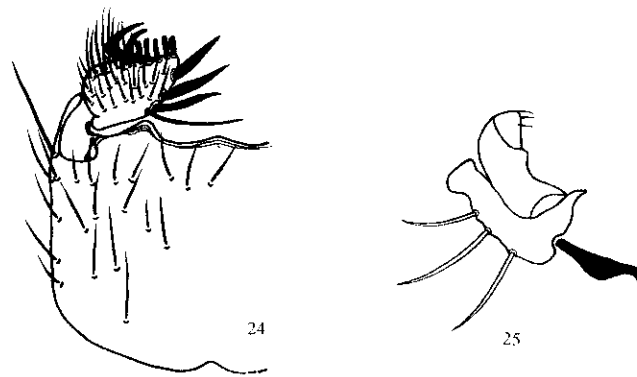


图 24~25 宽毛菌蚊,新种 *Mycetophila latichaeta* Wu et He, sp. nov.

24. 雄外生殖器,腹视 25. 生殖刺背突,侧背视

扁角柄节、梗节
扁角黄色;
;中胸后侧

正模♂,浙江安吉龙王山,1 300 m, 1996-05-13, 吴鸿采。副模 23♂♂,同正模;1♂,浙江安吉龙王山,400~500 m, 1995-07-14, 吴鸿采;1♂,浙江安吉龙王山,1995-07-20, 吴鸿采;2♂♂,浙江安吉龙王山,1996-05-12, 吴鸿采;2♂♂,浙江安吉龙王山,700 m, 1996-06-14, 吴鸿采;2♂♂,浙江德清莫干山,1992-04-18, 吴鸿采;1♂,福建武夷山挂墩,1991-10-07, 吴鸿

采。

新种与分布于浙江龙王山和莫干山的 *M. vigena* sp. nov. 相似,但后者的中胸后侧片具4根长刚毛,tb脉下面具4~11长毛,后基节有1端后深褐斑,生殖刺腹突端部具4宽钝毛,生殖刺背突结构也不同,可以区别。

54 龙王山菌蚊,新种 *Mycetophila longwangshana* Wu et He, sp. nov. (图 26~29)

雄:翅长 2.9 mm。头部须和口器黄色,须第 3 节最宽;头后部暗褐色;触角褐至深褐色。

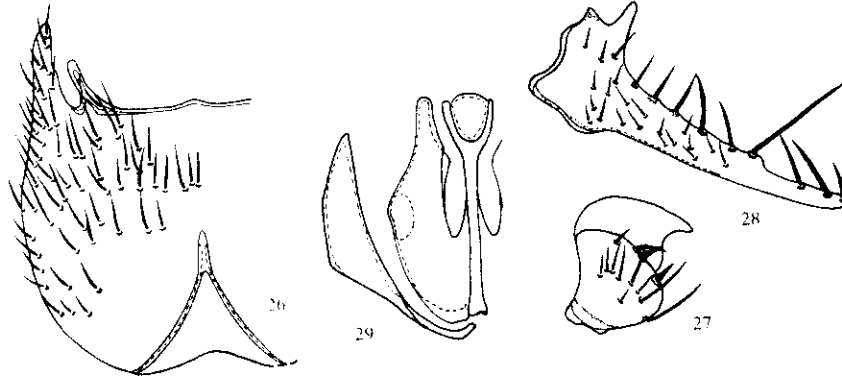


图 26~29 龙王山菌蚊,新种 *Mycetophila longwangshana* Wu et He, sp. nov.

26. 生殖基节,腹视 27. 生殖刺腹突,腹视 28. 生殖刺背突,侧背视 29. 交配器,背视

前胸前侧片具 4 根长刚毛;中胸盾片褐色,具 3 条深褐色宽纵带;小盾片褐色,具 4 根长刚毛;中胸后侧片具 5 根长刚毛。翅淡黄色透明,褐色中斑存在;C 脉终于 R_5 脉;横脉 r-m 略长于 M 脉主干;tb 脉下面具 12 长毛。平衡棒黄色。足黄色,前、中腿节色稍暗,后腿节端部褐色;中胫节具 4d, 3a, 4p;后胫节具 5d, 4a, 7p。后基节具弱后鬃,亚端鬃直长且短于基节直径。腹部褐至黑褐色。外生殖器淡褐色。

正模♂,浙江安吉龙王山,1300 m,1996-05-13,吴鸿采。

新种与查氏菌蚊 *M. chandleri* Wu, 1997 相似,但后者的生殖刺腹突后端突明显短于后基突,插入器和生殖基节的结构也不同,容易区别。

55 南方菌蚊 *Mycetophila meridionalisa* Wu, 1997

分布:浙江安吉龙王山,广西。

56 少齿菌蚊,新种 *Mycetophila oligodona* Wu et He, sp. nov. (图 30~32)

雄:翅长 3.3 mm。头部须和口器黄色,须第 3 节最宽;头后部褐黄色;触角柄节、梗节和第 1 鞭节褐黄色,其余淡褐色。前胸前侧片具 4 根长刚毛;中胸盾片褐黄色;中胸上前侧片长约等于宽;小盾片黄色,具 4 根长刚毛;中胸后侧片具 4 根长刚毛。翅黄色透明,褐色中斑存在;亚端褐色云纹不明显;C 脉终于 R_5 脉;横脉 r-m 略长于 M 脉主干;tb 脉下面具 9 长毛。平衡棒黄色。足黄色;中胫节具 6d, 5a, 4p;后胫节具 6d, 7a, 8p。后基节具弱短后鬃,亚端鬃直长不

达基节直径之半。腹部

正模♂,浙江安吉龙王山,1995-07-18,吴鸿采。

新种与分布于华中...
ta Wu, 1997 相近似,但...
mm 以上,生殖刺腹突...
刺,生殖刺背突基部密

57 极乐菌蚊,新种 *M...*
Wu et He, sp. nov.

雄:2.4~3.0 mm。

头部须和口器黄色...
后部深褐色;触角梗节...
色,柄节和其余鞭节褐...
根长刚毛;中胸盾片黄...
纵带;中胸上前侧片长...
根长刚毛。翅黄色透明...
毛。平衡棒黄白色。足...
具 6d, 3a-d, 7a。后基节...
外生殖器褐色。



图 32

正模♂,浙江安吉龙王山,1995-07-18,吴鸿采。

达基节直径之半。腹部背板 1~4 节褐色,第 5~6 节黑褐色;腹板色稍浅。外生殖器淡褐色。

正模♂,浙江安吉龙王山,1995-07-18,吴鸿采。

新种与分布于华中的 *M. curvicaudata* Wu, 1997 相近似,但后者的翅长达 4.0 mm 以上,生殖刺腹突具 4 个明显的粗黑刺,生殖刺背突基部密被刚毛,可以区别。

57 极乐菌蚊,新种 *Mycetophila paradisa* Wu et He, sp. nov. (图 33~35)

雄:2.4~3.0 mm。

头部须和口器黄色,须第 3 节最宽;头后部深褐色;触角梗节和第 1 鞭节基部黄色,柄节和其余鞭节褐色。前胸前侧片具 3 根长刚毛;中胸盾片黄色,具 3 条深褐色宽纵带;中胸上前侧片长约等于宽;小盾片黄色,两侧具小褐斑,具 4 根长刚毛;中胸后侧片具 3 根长刚毛。翅黄色透明,褐色中斑存在;C 脉终于 R₅ 脉;横脉 r-m 略长于 M 脉主干;tb 脉无长毛。平衡棒黄白色。足黄色,后腿节背面端 1/2 褐色;中胫节具 5~6d, 1a-d, 2a, 3v, 2p;后胫节具 6d, 3a-d, 7a。后基节具弱短后鬃,亚端鬃直长且短于基节直径。腹部背板和腹板深褐色。外生殖器褐色。

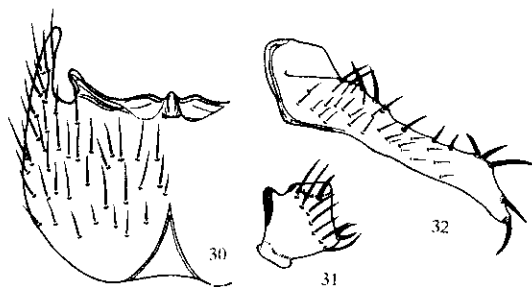


图 30~32 少齿菌蚊,新种 *Mycetophila oligodoma* Wu et He, sp. nov.

30. 生殖基节,腹视 31. 生殖刺腹突,腹视
32. 生殖刺背突,侧背视

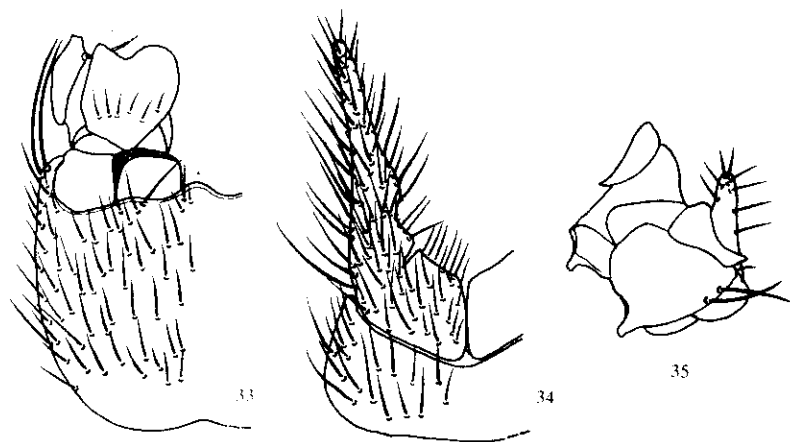


图 33~35 极乐菌蚊,新种 *Mycetophila paradisa* Wu et He, sp. nov.

33. 雄外生殖器,腹视 34. 尾须,背视 35. 生殖刺背突,侧背视

正模♂,浙江安吉龙王山,800~1200 m,1995-07-20,吴鸿采。副模 3♂♂,同正模;17♂♂,浙江安吉龙王山,800~1300 m,1995-07-16,吴鸿采;1♂,浙江安吉龙王山,500~800 m,1995-07-18,吴鸿采;6♂♂,浙江安吉龙王山,1200~1500 m,1995-07-20,吴鸿采;1♂,浙

江安吉龙王山, 1996-05-12, 吴鸿采; 1♂, 浙江德清莫干山剑池, 380 m, 1991-05-02, 吴鸿采; 1♂, 浙江开化古田山, 1992-07-17, 吴鸿采。

新种与产于捷克的 *M. forcipata* Lundstrom, 1913 略相似, 但后者的后胫节无前背鬃, 生殖刺腹突构造也不同, 可以区别。

58 稀见菌蚊 *Mycetophila perpauca* Lastovka, 1972

分布: 浙江安吉龙王山, 湖北; 日本。

59 似锯菌蚊, 新种 *Mycetophila prionoda* Wu et He, sp. nov. (图 36~37)

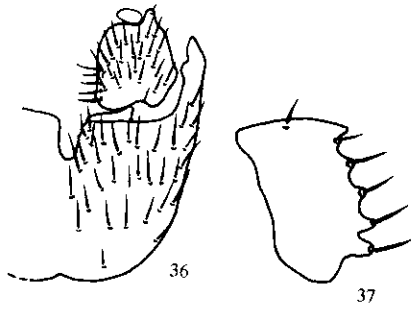


图 36~37 似锯菌蚊, 新种 *Mycetophila prionoda* Wu et He, sp. nov.
36. 雄外生殖器, 腹视 37. 生殖刺背突, 侧背视

雄: 翅长 2.5~3.0 mm。头部须和口器黄色, 须第 3 节最宽; 头后部深褐色; 触角柄节、梗节和第 1 鞭节基部褐黄色, 其余淡褐色。前胸前侧片具 3 根长刚毛; 中胸盾片黄色, 具 3 条黑褐色宽纵带; 中胸上前侧片长约为宽的 1.1 倍; 小盾片深褐色, 具 4 根长刚毛; 中胸后侧片具 4 根长刚毛。翅黄色透明, 褐色中斑存在; 亚端褐斑起自 R_1 脉之内, 向后止于 R_5 脉之后; C 脉伸过 R_5 脉段约为 R_5 脉至 M_1 脉间距的 1/5; Cu 脉叉略在 M 脉叉之外; 横脉 r-m 略长于 M 脉主干; tb 脉下面具 15~17 长毛。平衡棒黄色。足黄色, 后基节基部褐色, 后腿节背面及端部深褐色; 中胫节具 6d, 3a, 3v; 后胫节具 5d, 7a。后基节具弱短后鬃, 亚端鬃

直长且短于基节直径。腹部背板黑褐色; 腹板褐色; 外生殖器淡褐色。

正模♂, 浙江庆元百山祖, 1994-05, 吴鸿采。副模 1♂, 浙江安吉龙王山, 1995-07-14, 吴鸿采; 2♂♂, 浙江安吉龙王山, 1995-07-16, 吴鸿采; 1♂, 浙江安吉龙王山, 1995-07-20, 吴鸿采; 1♂, 浙江安吉龙王山, 1995-10-17, 吴鸿采。

新种与分布于北美的 *M. propinqua* Walker, 1848 略近似, 但后者的个体较大(翅长达 4.0 mm 以上), 生殖刺背突和腹突的形状也明显不同, 容易区别。

60 裂尾菌蚊, 新种 *Mycetophila schistocauda* Wu et Yang, sp. nov. (图 38~40)

雄 翅长 2.1~2.7 mm。头部须和口器黄色, 须第 3 节最宽; 头后部褐色, 两侧黄色; 触角柄节、梗节和第 1 鞭节基部黄色, 其余褐色。前胸前侧片具 3 根长刚毛; 中胸盾片黄色, 具 3 条黑褐色宽纵带; 中胸上前侧片长约为宽的 1.3 倍; 小盾片黄色, 两侧褐色, 具 4 根长刚毛; 中胸后侧片具 3 根长刚毛。翅黄色透明, 褐色中斑存在; C 脉略伸过 R_5 脉; 横脉 r-m 约与 M 脉主干等长; tb 脉无长毛。平衡棒黄色。足黄色, 中腿节端部褐色, 后腿节端 1/3 褐色; 中胫节具 5d, 1a-d, 2a, 2v, 2p; 后胫节具 8d, 6a。后基节具弱短后鬃, 亚端鬃直长且短于基节直径。腹部背板褐色; 腹板色稍浅。外生殖器淡褐色。

雌: 翅长 2.4~2.8 mm。色型和特征与雄虫相同, 外生殖器淡褐色。

正模♂, 浙江安吉龙王山, 1995-10-17, 吴鸿采。配模♀, 福建武夷山挂墩, 1991-10-07, 吴

鸿采; 副模 2♂♂, 同正模; 1♂, 浙江开化古田山; 27♂♂, 浙江开化古田山; 1♂, 浙江开化古田山; 7♂♂, 浙江开化古田山。

新种与 *M. bohari* 构造亦不同, 可以区别。



图 38~40 裂尾菌蚊, 新种 *Mycetophila schistocauda* Wu et Yang, sp. nov.
38. 雄外生殖器, 腹视 39. 生殖刺背突, 侧背视 40. 腹突, 腹视

61 密毛菌蚊, 新种 *Mycetophila densicoma* Wu et Yang, sp. nov. (图 41~43)

雄: 3.2~3.8 mm。头部须和口器黄色, 须第 3 节最宽; 头后部褐色, 两侧黄色; 触角柄节、梗节和第 1 鞭节基部黄色, 其余褐色。前胸前侧片长约为宽的 1.1 倍; 小盾片黄色, 两侧褐色, 具 4 根长刚毛; 中胸后侧片具 3 根长刚毛。翅黄色透明, 褐色中斑存在; C 脉略伸过 R_5 脉; 横脉 r-m 约与 M 脉主干等长; tb 脉无长毛。平衡棒黄色。足黄色, 中腿节端部褐色, 后腿节端 1/3 褐色; 中胫节具 5d, 1a-d, 2a, 2v, 2p; 后胫节具 8d, 6a。后基节具弱短后鬃, 亚端鬃直长且短于基节直径。腹部背板褐色; 腹板色稍浅。外生殖器淡褐色。

正模♂, 浙江安吉龙王山, 1995-07-14, 吴鸿采; 1♂, 浙江安吉龙王山, 1995-10-17, 吴鸿采。

新种与分布于欧洲的 *M. propinqua* 无内突, 生殖刺背突构造不同, 可以区别。

62 盾形菌蚊, 新种 *Mycetophila scutiformis* Wu et Yang, sp. nov. (图 44~46)

雄: 翅长 3.4 mm。头部须和口器黄色, 须第 3 节最宽; 头后部褐色, 两侧黄色; 触角柄节、梗节和第 1 鞭节基部黄色, 其余褐色。前胸前侧片具 3 根长刚毛; 中胸盾片黄色, 具 3 条黑褐色宽纵带; 中胸上前侧片长约为宽的 1.3 倍; 小盾片黄色, 两侧褐色, 具 4 根长刚毛; 中胸后侧片具 3 根长刚毛。翅黄色透明, 褐色中斑存在; C 脉略伸过 R_5 脉; 横脉 r-m 约与 M 脉主干等长; tb 脉无长毛。平衡棒黄色。足黄色, 中腿节端部褐色, 后腿节端 1/3 褐色; 中胫节具 5d, 1a-d, 2a, 2v, 2p; 后胫节具 8d, 6a。后基节具弱短后鬃, 亚端鬃直长且短于基节直径。腹部背板褐色; 腹板色稍浅。外生殖器淡褐色。

02, 吴鸿采;

无前背鬃, 生

须和口器黄
角柄节、梗节
前胸前侧
条黑褐色宽
倍; 小盾片深
4根长刚毛。
冠起自 R_1 脉
 R_5 脉段约为
在 M 脉叉之
下面具 15~
基节基部褐
节具 6d, 3a,
节具 6d, 3a,

5-07-14, 吴鸿

2-20, 吴鸿采;

较大(翅长达

40)

侧黄色; 触角
黄色, 具 3 条
长刚毛; 中胸
约与 M 脉主
色; 中胫节具
节直径。腹部

91-10-07, 吴

鸿采; 副模 2♂♂, 同正模; 2♂♂, 2♀♀, 同配模; 1♂, 浙江安吉龙王山, 1995-07-20, 吴鸿采; 1♂, 浙江开化古田山, 1992-07-16, 吴鸿采; 2♂♂, 浙江开化古田山, 1992-07-17, 吴鸿采; 27♂♂, 浙江开化古田山, 1992-10-28, 邓一飞采; 33♂♂, 浙江开化古田山, 1992-10-28, 吴鸿采; 1♂, 浙江开化古田山, 1992-10-29, 邓一飞采; 5♂♂, 浙江开化古田山, 1992-10-29, 吴鸿采; 7♂♂, 浙江开化古田山, 1994-09-27, 何俊华采; 1♂, 福建将乐龙栖山, 1991-10-09, 吴鸿采。

新种与 *M. bohartorum* (Laffoon, 1957) 相似, 但后者的生殖基节后缘不深凹, 生殖刺背突构造亦不同, 可以区别。

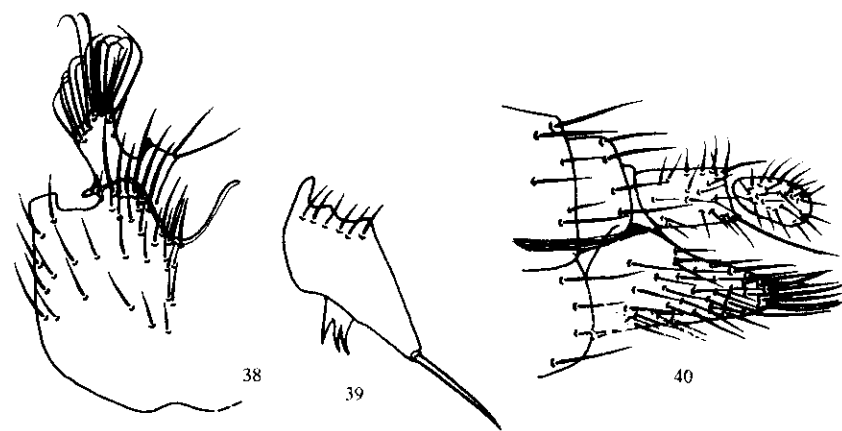


图 38~40 裂尾菌蚊, 新种 *Mycetophila schistocauda* Wu et Yang, sp. nov.

38. 雄外生殖器, 腹视 39. 生殖刺背突, 侧背视 40. 雌外生殖器, 侧视

61 密毛菌蚊, 新种 *Mycetophila scopata* Wu et Yang, sp. nov. (图 41~42)

雄: 3.2~3.8 mm。头部须和口器黄色, 须第 3 节最宽; 头后部深褐色; 触角柄节、梗节和第 1 鞭节基半部黄色, 其余褐色。前胸前侧片具 4 根长刚毛; 中胸盾片暗褐色, 肩角黄色; 中胸上前侧片长约为宽的 0.9 倍; 小盾片黄色, 两侧深褐色, 具 4 根长刚毛; 中胸后侧片具 4 根长刚毛。翅黄色透明, 褐色中斑存在; 亚端褐斑起自 R_1 脉至 R_5 脉端 1/2 处, 向后达 M_2 脉; C 脉终于 R_5 脉; 横脉 r-m 为 M 脉主干的 2.0 倍; tb 脉无长毛。平衡棒黄白色。足黄色, 后腿节端部褐色; 中胫节具 6d, 1a-d, 3a, 3v, 3p; 后胫节具 5d, 7a, 4p。后基节具弱短后鬃, 亚端鬃直长且短于基节直径。腹部背板褐色; 腹板淡褐色。外生殖器淡褐色。

正模♂, 浙江安吉龙王山, 1996-05-12, 吴鸿采。副模 1♂, 浙江安吉龙王山, 400~500 m, 1995-07-14, 吴鸿采; 1♂, 浙江德清莫干山剑池, 1992-04-18, 吴鸿采。

新种与分布于欧洲的 *M. hetschkoi* Landrock, 1918 略相似, 但后者的生殖刺腹突腹基部无内突, 生殖刺背突构造也明显不同, 可以区别。

62 盾形菌蚊, 新种 *Mycetophila scutata* Wu et Yang, sp. nov. (图 43~44)

雄: 翅长 3.4 mm。头部须和口器黄色, 须第 3 节最宽; 头后部深褐色; 触角柄节、梗节和第 1 鞭节基部黄色, 其余褐色。前胸前侧片具 3 根长刚毛; 中胸盾片深褐色, 肩角及两侧黄色; 中

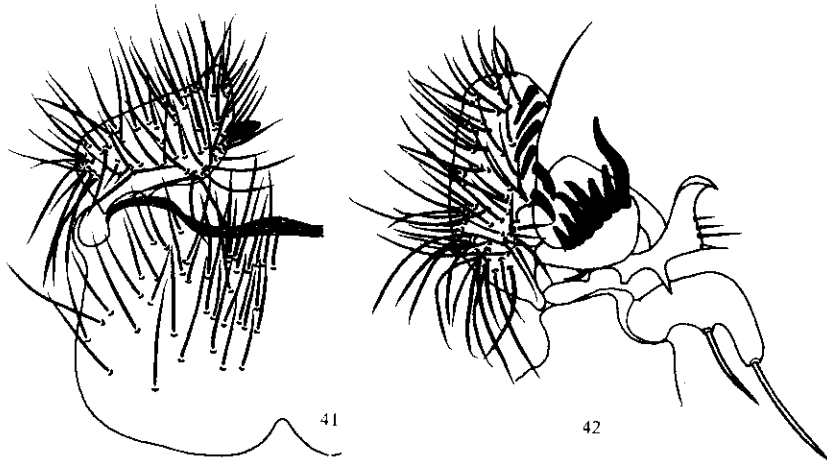


图 41~42 密毛菌蚊, 新种 *Mycetophila scopata* Wu et Yang, sp. nov.

41. 雄外生殖器, 腹视 42. 生殖刺背突, 侧背视

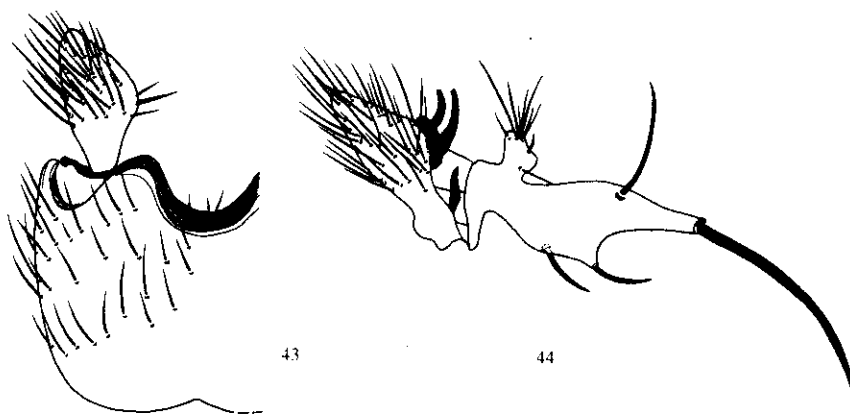


图 43~44 盾形菌蚊, 新种 *Mycetophila scutata* Wu et Yang, sp. nov.

43. 雄外生殖器, 腹视 44. 生殖刺背突, 侧背视

胸上前侧片长约等于宽; 小盾片黄色, 两侧褐色, 具 4 根长刚毛; 中胸后侧片具 3 根长刚毛。翅黄色透明, 褐色中斑存在; 亚端褐斑起自 R_1 脉至 R_5 脉端 $3/4$ 处, 向后伸达 M_1 脉之后, C 脉终于 R_5 脉; 横脉 $r-m$ 约为 M 脉主干的 2.0 倍; tb 脉无长毛。平衡棒黄白色。足黄色, 后基节端后部有 1 深褐色斑, 中、后腿节端部及中、后胫节端部深褐色; 中胫节具 $6d, 1a-d, 3a, 2v, 4p$; 后胫节具 $5d, 7a, 2p$ 。后基节具弱短后鬃, 亚端鬃直长且短于基节直径。腹部背板深褐色, 前缘狭黄色; 腹板淡褐至褐色。外生殖器淡褐色。

正模♂, 浙江安吉龙王山, 1300 m, 1996-05-13, 吴鸿采。副模 1♂, 同正模。

新种与产于亚速群岛的 *M. atlantia* Nielsen, 1966 相似, 但后者的生殖基节后缘中央有一突起, 生殖刺腹突内侧无黑褐色构造, 生殖刺背突构造也不同, 因而容易区别。

63 多刺菌蚊, 新种 *Mycetophila senticosa* Wu et Yang, sp. nov. (图 45~46)

雄: 翅长 2.0~2.2 mm, 褐色, 须第 3 节最宽; 头后部和第 1 鞭节基部黄色, 具 3 根长刚毛; 中胸盾片约为宽的 1.2 倍; 小盾片中胸后侧片具 3 根长刚毛; C 脉伸过 R_5 脉; 横脉 $r-m$ 又在 M 脉叉之外; tb 脉黄色, 后基节基后部褐色; 中胫节具 $5d, 1a-d, 2a, 6a$ 。后基节具弱短后鬃, 亚端鬃直长。腹部背板深褐色。

正模♂, 浙江安吉龙王山, 1300 m, 1996-05-13, 吴鸿采。副模 1♂, 浙江安吉龙王山, 1300 m, 1996-05-13, 吴鸿采。

新种与分布于欧洲大陆的 *M. sicyoideusa* Wu et Yang, 1996 相似, 但后者的生殖刺腹突构造明显不同。

64 申氏菌蚊 *Mycetophila shenii* Wu et Yang, sp. nov.

正模♂, 浙江安吉龙王山, 1300 m, 1996-05-13, 吴鸿采。

65 葫形菌蚊, 新种 *Mycetophila hufuensis* Wu et Yang, sp. nov.

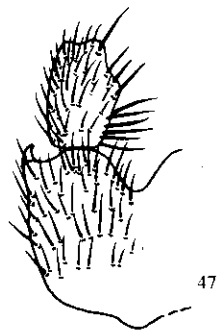


图 47~48 葫形菌蚊, 新种 *Mycetophila hufuensis* Wu et Yang, sp. nov.

47. 雄外生殖器, 腹视

外生殖器淡褐色。

正模♂, 浙江安吉龙王山, 1300 m, 1996-05-13, 吴鸿采; 4♂♂, 浙江安吉龙王山, 1300 m, 1996-05-13, 吴鸿采; 1♂, 浙江安吉龙王山, 1300 m, 1996-05-13, 吴鸿采。

雄:翅长 2.0~2.6 mm。头部须和口器黄色,须第3节最宽;头后部黑褐色;触角柄节、梗节和第1鞭节基部黄色,其余暗褐色。前胸前侧片具3根长刚毛;中胸盾片黑褐色;中胸上前侧片长约为宽的1.2倍;小盾片黑褐色,具4根长刚毛;中胸后侧片具3根长刚毛。翅黄色透明,无斑纹;C脉伸过 R_5 脉;横脉r-m略短于M脉主干;C脉又在M脉叉之外;tb脉无长毛。平衡棒黄色。足黄色,后基节基后部褐色;后腿节端1/4黑褐色;中胫节具5d, 1a-d, 2a, 2v, 2p;后胫节具5d, 2a-d, 6a。后基节具弱短后鬃,亚端鬃直长且短于基节直径。腹部背板深褐色;腹板褐黄色。外生殖器淡褐色。

正模♂,浙江安吉龙王山,1996-05-12,吴鸿采。副模1♂,浙江开化古田山,1993-10-28,邓一飞采;1♂,浙江庆元百山祖,1993-08-20,吴鸿采;1♂,福建武夷山挂墩,1991-10-07,吴鸿采。

新种与分布于欧洲的 *M. immaculata* Dziedzicki, 1884 略相似,但后者的生殖刺背突和生殖刺腹突构造明显不同,可以区别。

64 申氏菌蚊 *Mycetophila sheni* Wu et Yang, sp. nov. (另文发表)

正模♂,浙江安吉龙王山,副模1♂,河南嵩县白云山。

65 葫形菌蚊,新种 *Mycetophila sicyoideusa* Wu et Yang, sp. nov. (图 47~48)

雄:翅长 2.4~2.9 mm。头部须和口器黄色,须第3节最宽;头后部深褐色;触角黄褐色。前胸前侧片具3根长刚毛;中胸盾片黑褐色,肩角黄色;中胸上前侧片长约为宽的1.2倍;小盾片黄色,两侧褐色,具4根长刚毛;中胸后侧片具3根长刚毛。翅黄色透明,褐色中斑存在;C脉伸过 R_5 脉段为 R_5 脉至 M_1 脉间距的1/5;Cu脉叉略在M脉叉之外;横脉r-m长约为M脉主干的1.1~2.0倍;tb脉下面具7~14长毛。平衡棒黄色。足黄色,中、后腿节背面及后腿节端1/3黑褐色,中、后胫节端部黑褐色;中胫节具6d, 3a, 3v;后胫节具6d, 7a。后基节具弱短后鬃,亚端鬃直长且短于基节直径。腹部背板黑褐色;腹板深褐色。

外生殖器淡褐色。

正模♂,浙江安吉龙王山,1995-07-20,吴鸿采。副模1♂,浙江安吉龙王山,1995-07-12,吴鸿采;4♂♂,浙江安吉龙王山,1995-07-14,吴鸿采;2♂♂,浙江安吉龙王山,1995-07-16,吴鸿采;1♂,浙江安吉龙王山,1995-07-18,吴鸿采;2♂♂,浙江安吉龙王山,1995-10-17,吴鸿

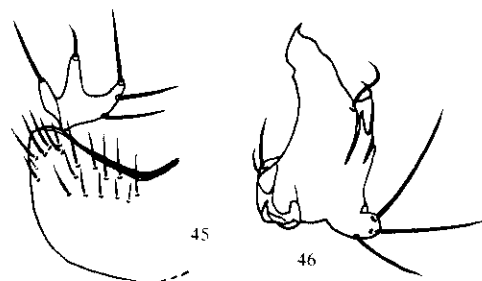


图 45~46 多刺菌蚊,新种 *Mycetophila senticosa* Wu et Yang, sp. nov.

45. 雄外生殖器,腹视 46. 生殖刺背突,侧背视

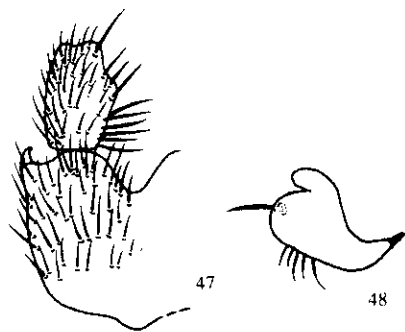


图 47~48 葫形菌蚊,新种 *Mycetophila sicyoideusa* Wu et Yang, sp. nov.

47. 雄外生殖器,腹视 48. 生殖刺背突,侧背视

根长刚毛。翅脉之后,C脉终端黄色,后基节端1, 3a, 2v, 4p;后板深褐色,前缘

节后缘中央有

6)

采;1♂,浙江开化古田山,1992-07-17,陈学新采;2♂♂,浙江开化古田山,1992-07-22,吴鸿采;1♂,浙江开化古田山,1992-07-25,吴鸿采;3♂♂,浙江开化古田山,1992-10-28,邓一飞采;2♂♂,浙江开化古田山,1992-10-28,吴鸿采;1♂,浙江开化古田山,1994-09-27,何俊华采;1♂,浙江庆元百山祖,1993-08-15,吴鸿采;2♂♂,福建武夷山挂墩,1991-10-07,吴鸿采。

新种与似锯菌蚊 *M. prionoda* sp. nov. 相似,但后者的中胸盾片具3条黑褐色宽纵带,生殖刺背突近四方形,边缘锯齿状,容易区别。

66 显著菌蚊 *Mycetophila sigillata* Dziedzicki, 1884 中国新纪录

分布:浙江安吉龙王山;俄罗斯,欧洲,北美洲。

67 宽广菌蚊,新种 *Mycetophila spatiosa* Wu et Yang, sp. nov. (图49~50)

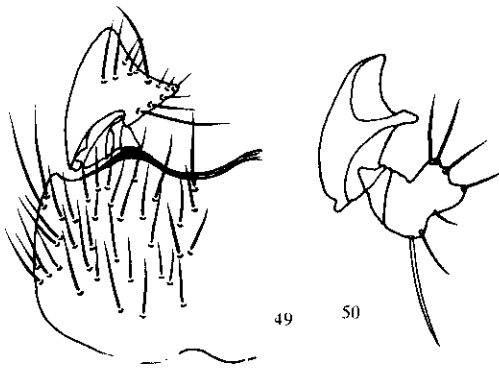


图49~50 宽广菌蚊,新种 *Mycetophila spatiosa* Wu et Yang, sp. nov.

49. 雄外生殖器,腹视 50. 生殖刺背突,侧背视

节黄色。外生殖器淡褐色。

正模♂,浙江安吉龙王山,1996-05-12,吴鸿采。新种与北美广布的 *M. venusta* (Laffoon, 1957)略相似,但后者的生殖刺腹突和生殖刺背突构造完全不同,可以区别。

68 长毛菌蚊,新种 *Mycetophila stuppasa* Wu et Yang, sp. nov. (图51~52)

雄:翅长2.2~2.7 mm。头部须和口器褐黄色,须第3节最宽;头后部暗褐色;触角柄节、梗节和第1鞭节基部褐黄色,其余褐色。前胸前侧片具3根长刚毛;中胸盾片暗褐色,肩角黄色;中胸上前侧片长约为宽的1.1倍;小盾片暗褐色,具4根长刚毛;中胸后侧片具3根长刚毛。翅黄色透明,无斑纹;C脉终于R₅脉;横脉r-m长约为M脉主干的0.3倍;tb脉无长毛。平衡

棒褐黄色。足褐黄色具弱后鬃,亚端鬃直。正模♂,浙江安吉龙王山,1996-05-12,吴鸿采。新种与分布于北美,生殖刺背突构造。69 三刺菌蚊 *Mycetophila trispinosa* Wu et Yang, sp. nov. 分布:浙江安吉龙王山。70 茂盛菌蚊,新种 *Mycetophila luxuriosa* Wu et Yang, sp. nov. 雄:3.3~3.9 mm。翅长3.0 mm。头部须和口器褐黄色,须第3节最宽;头后部深褐色;触角柄节、梗节和第1鞭节黄色,其余褐色。前胸前侧片具3根长刚毛;中胸盾片黑褐色;中胸上前侧片长约为宽的0.8倍;小盾片黑褐色,具4根长刚毛;中胸后侧片具4根长刚毛。翅黄色透明,褐色中斑存在;亚端褐斑不明显,位于近R₅脉端处;C脉终于R₅脉;横脉r-m长约为M脉主下的2.0倍;tb脉无长毛。平衡棒黄色。足黄色,后腿节端部深褐色;中胫节具6d, 1a-d, 3a, 3v, 1p;后胫节具5d(并间8弱d), 6a。后基节具弱短后鬃,亚端鬃直长且短于基节直径。腹部背板深褐色;腹板1、4~6节褐色,第2~3

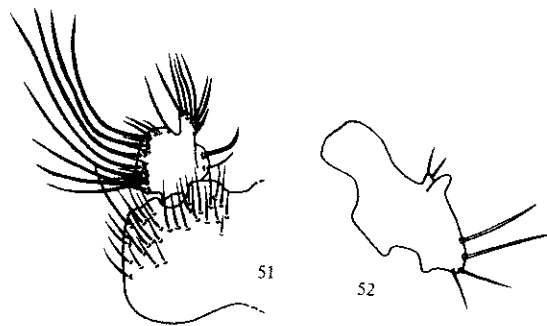


图51~52 长毛菌蚊,新种 *Mycetophila stuppasa* Wu et Yang, sp. nov.

51. 雄外生殖器,腹视 52. 生殖刺背突,侧背视

棒褐黄色。足褐黄色具弱后鬃,亚端鬃直。正模♂,浙江安吉龙王山,1996-05-12,吴鸿采。新种与分布于北美,生殖刺背突构造。

69 三刺菌蚊 *Mycetophila trispinosa* Wu et Yang, sp. nov.

分布:浙江安吉龙王山。

70 茂盛菌蚊,新种 *Mycetophila luxuriosa* Wu et Yang, sp. nov.

雄:3.3~3.9 mm。翅长3.0 mm。头部须和口器褐黄色,须第3节最宽;头后部深褐色;触角柄节、梗节和第1鞭节黄色,其余褐色。前胸前侧片具3根长刚毛;中胸盾片黑褐色;中胸上前侧片长约为宽的0.8倍;小盾片黑褐色,具4根长刚毛;中胸后侧片具4根长刚毛。翅黄色透明,褐色中斑存在;亚端褐斑不明显,位于近R₅脉端2/3处,向后;横脉r-m长为M脉主干的2.0倍;tb脉无长毛。平衡棒黄色。足黄色,后腿节端部深褐色;中胫节具4~11长毛。平衡棒黄色。后基节端后部有1深褐色斑;后胫节端部深褐色;中胫节具11d, 7a, 7b。亚端鬃直长且短于基节直径。

正模♂,浙江安吉龙王山,1996-05-12,吴鸿采。新种与全北区广布的 *M. venusta* (Laffoon, 1957)相似,但后两者的生殖刺背突构造完全不同,可以区别。

新种与全北区广布的 *M. venusta* (Laffoon, 1957)相似,但后两者的生殖刺背突构造完全不同,可以区别。

71 渐尖埃菌蚊,新种 *Mycetophila acuminata* Wu et Yang, sp. nov.

雄 翅长2.6~3.0 mm。翅长2.6~3.0 mm。头部须和口器褐黄色,须第3节最宽;头后部暗褐色;触角柄节、梗节和第1鞭节基部褐黄色,其余褐色。前胸前侧片具3根长刚毛;中胸盾片暗褐色,肩角黄色;中胸上前侧片长约为宽的1.1倍;小盾片暗褐色,具4根长刚毛;中胸后侧片具3根长刚毛。翅黄色透明,无斑纹;C脉终于R₅脉;横脉r-m长约为M脉主干的0.3倍;tb脉无长毛。平衡棒褐黄色,两侧淡黄褐色;足黄色,后腿节端部深褐色;中胫节具1p-d;中胫节具11d, 7a, 7b。亚端鬃直长且短于基节直径。雌:翅长2.8~3.0 mm。翅长2.8~3.0 mm。头部须和口器褐黄色,须第3节最宽;头后部暗褐色;触角柄节、梗节和第1鞭节基部褐黄色,其余褐色。前胸前侧片具3根长刚毛;中胸盾片暗褐色,肩角黄色;中胸上前侧片长约为宽的1.1倍;小盾片暗褐色,具4根长刚毛;中胸后侧片具3根长刚毛。翅黄色透明,无斑纹;C脉终于R₅脉;横脉r-m长约为M脉主干的0.3倍;tb脉无长毛。平衡棒褐黄色,两侧淡黄褐色;足黄色,后腿节端部深褐色;中胫节具1p-d;中胫节具11d, 7a, 7b。亚端鬃直长且短于基节直径。

2-07-22, 吴鸿
10-28, 邓一飞
09-27, 何俊华
07, 吴鸿采。
色宽纵带, 生

棒褐黄色。足褐黄色, 后腿节端 1/5 暗褐色; 中胫节具 5d, 2a, 1v, 2p; 后胫节具 5d, 6a。后基节具弱后鬃, 亚端鬃直长且短于基节直径。腹部背板暗褐色; 腹板褐色。外生殖器淡褐色。

正模♂, 浙江安吉龙王山, 400~500 m, 1995-07-14, 吴鸿采。副模 1♂, 同正模。

新种与分布于北美的 *M. comata* (Laffoon, 1957) 相近似, 但后者的生殖刺腹突内后突光裸, 生殖刺背突构造也不同, 可以区别。

69 三刺菌蚊 *Mycetophila trinotata* Staeger, 1840 中国新纪录

分布: 浙江安吉龙王山; 欧洲, 北美洲。

70 茂盛菌蚊, 新种 *Mycetophila vigena* Wu et Yang, sp. nov. (图 53~54)

雄: 3.3~3.9 mm。头部须和口器黄褐色, 须第 3 节最宽; 头后部深褐色; 触角柄节、梗节和第 1 鞭节黄色, 其余褐色。前胸前侧片具 4 根长刚毛; 中胸盾片深褐色, 两侧黄色, 并具 2 条黄色狭纵带; 中胸上前侧片长约为宽的 0.8 倍; 小盾片黄色, 两侧各有 1 褐色大斑, 具 4 根长刚毛; 中胸后侧片具 4 根长刚毛。翅黄色透明, 褐色中斑存在; 亚端褐斑起自 R₁ 脉至 R₅ 脉端 2/3 处, 向后达 M₂; C 脉终于 R₅ 脉; 横脉 r-m 长为 M 脉主干的 4.0~5.0 倍; tb 脉下面具 4~11 长毛。平衡棒黄白色。足黄色, 后基节端后部有 1 深褐色斑; 后腿节端部及中、后胫节端部深褐色; 中胫节具 6d, 1a-d, 3a, 3v, 2p; 后胫节具 11d, 7a, 3p。后基节具弱短后鬃, 亚端鬃直长且短于基节直径。腹部背板深褐色, 第 2~6 节后缘黄色; 腹板褐色。外生殖器褐色。

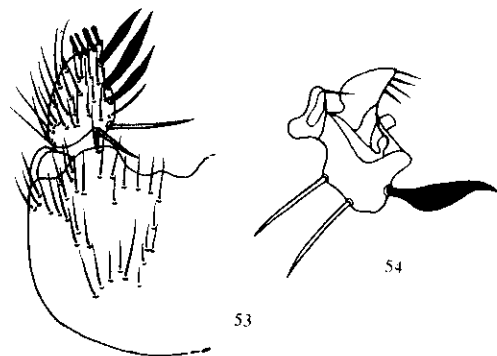


图 53-54 茂盛菌蚊, 新种 *Mycetophila vigena* Wu et Yang, sp. nov.

53. 雄外生殖器, 腹视 54. 生殖刺背突, 侧背视

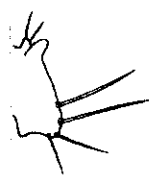
正模♂, 浙江安吉龙王山, 1300 m, 1996-05-13, 吴鸿采。副模 3♂♂, 同正模; 1♂, 浙江德清莫干山, 1992-04-18, 吴鸿采。

新种与全北区广布的 *M. dentata* (Lundstrom, 1913) 和 *M. finlandica* Edwards, 1913 相似, 但后两者的生殖刺背突结构不同, 且缺宽曲毛, 可以区别。

71 渐尖埃菌蚊, 新种 *Epicyptha acuminata* Wu et Yang, sp. nov. (图 55~57)

雄 翅长 2.6~3.5 mm。头部须和口器黄色; 头后部深褐色; 触角褐色。前胸背板具 3~4 根长刚毛; 中胸盾片黄色, 具 3 条分界不清晰的暗褐色宽纵带; 中胸上前侧片长约为宽的 1.3 倍; 小盾片暗褐色, 具 4 根长刚毛; 中胸后侧片具 2 根长刚毛。翅褐黄色透明, 无斑纹; C 脉略伸过 R₅ 脉; 横脉 r-m 长约为 M 脉主干的 1.6 倍; tb 脉下面具 6~8 长毛。平衡棒黄色。足黄色; 前胫节具 1p-d; 中胫节具 5d, 2a-d, 3a, 5~7v, 1p; 后胫节具 6d, 4a-d, 6a, 6~8p。腹部背板褐色, 两侧淡黄褐色; 腹板淡黄褐色。外生殖器淡褐色。

雌: 翅长 2.8~3.0 mm。色型和特征与雄虫相同, 外生殖器淡褐黄色。



ila

背视

正模♂, 浙江安吉龙王山, 1995-07-18, 吴鸿采。配模♀, 浙江安吉龙王山, 1995-07-14, 吴鸿采; 副模 3♂♂, 浙江开化古田山, 1992-07-17, 吴鸿采; 1♂, 浙江开化古田山, 1992-07-17, 陈学新采; 2♂♂, 浙江开化古田山, 1992-07-17, 马云采; 2♂♂, 1♀, 浙江开化古田山, 1992-07-21, 吴鸿采; 3♂♂, 浙江开化古田山, 1992-07-22, 吴鸿采; 8♂♂, 2♀♀, 浙江开化古田山, 1992-07-25, 吴鸿采; 2♂♂, 浙江开化古田山, 1992-07-27, 吴鸿采; 2♂♂, 1♀, 浙江开化古田山, 1992-10-28, 邓一飞采; 1♂, 浙江开化古田山, 1992-10-29, 邓一飞采; 2♂♂, 浙江开化古田山, 1992-10-29, 吴鸿采。

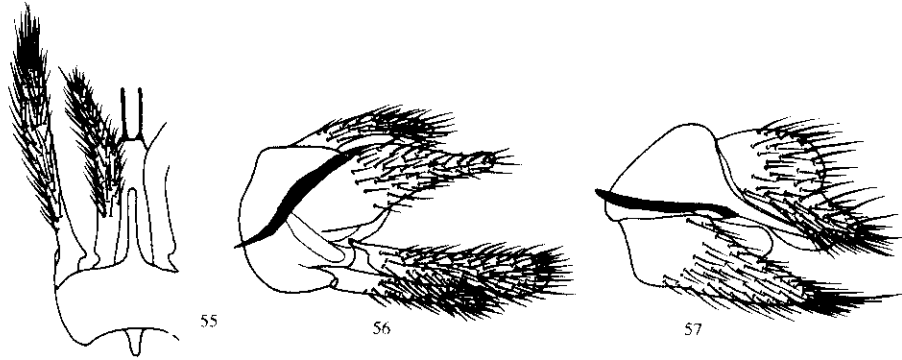


图 55-57 渐尖埃菌蚊, 新种 *Epicypta acuminata* Wu et Yang, sp. nov.
55. 雄外生殖器, 腹视 56. 雄外生殖器, 侧视 57. 雌外生殖器, 侧视

新种与开裂埃菌蚊 *E. fissusa* sp. nov. 相近似, 但后者的中胸盾片暗褐色, 侧突最长, 亚侧突扫帚状, 可以区别。

72 安吉埃菌蚊, 新种 *Epicypta anjiensis* Wu et Yang, sp. nov. (图 58~60)

雄: 翅长 2.9~3.3 mm。头部须和口器黄色; 头后部深褐色; 触角黄褐色。前胸背板具 2 根长刚毛; 中胸盾片黄色, 具 3 条多少分离的黑褐色宽纵带; 中胸上前侧片长约为宽的 1.2 倍;

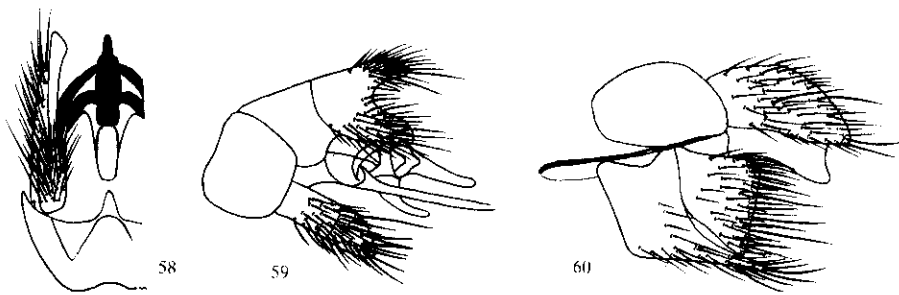


图 58-60 安吉埃菌蚊, 新种 *Epicypta anjiensis* Wu et Yang, sp. nov.
58. 雄外生殖器, 腹视 59. 雄外生殖器, 侧视 60. 雌外生殖器, 侧视

小盾片暗褐色, 具 4 根长刚毛; 中胸后侧片具 2 根长刚毛。翅黄色透明, 无斑纹; C 脉终于 R₅ 脉; 横脉 r-m 略长于 M 脉主干; tb 脉下面具 2 长毛。平衡棒黄色。足黄色; 前胫节具 1p-d; 中

胫节具 6d, 2a-d, 3a, 4, 4p-d; 第 6 节后缘黄色; 腹板黄色。

雌: 翅长 3.2 mm。正模♂, 浙江安吉龙王山, 1995-07-18, 吴鸿采; 副模 2♂♂, 同。1995-07-18, 吴鸿采; 1♂, 浙江安吉龙王山, 1995-08-21, 吴鸿采; 1♂, 浙江安吉龙王山, 1995-08-21, 吴鸿采。新种与中华埃菌蚊相近似, 须细长, 容易区别。

73 白云埃菌蚊 *Epicypta albicincta* sp. nov.
分布: 浙江安吉龙王山。

74 基枝埃菌蚊, 新种 *Epicypta basicauda* sp. nov.
雄 翅长 2.2~3.0 mm。翅黄色透明, 无斑纹; C 脉终于 R₅ 脉; 横脉 r-m 略长于 M 脉主干; tb 脉下面具 2 长毛。平衡棒黄色。足黄色; 前胫节具 1p-d; 中胫节具 6d, 2a-d, 3a, 4, 4p-d; 第 6 节后缘黄色; 腹板黄色。



图 61~62

色透明, 无斑纹; C 脉终于 R₅ 脉; 横脉 r-m 略长于 M 脉主干; tb 脉下面具 2 长毛。平衡棒黄色。足黄色; 后胫节具 5d, 4a, 4~5v, 1p; 后胫节黄色, 其余淡褐色。

5-07-14, 吴
992-07-17,
田山, 1992-
化古田山,
江开化古田
江开化古田

胫节具 6d, 2a-d, 3a, 4v; 后胫节具 6d, 3a-d, 5a, 2p。腹部背板褐色, 第 3~5 节两侧和前侧角及第 6 节后缘黄色; 腹板淡褐色。外生殖器淡褐色。

雌: 翅长 3.2 mm。色型和特征与雄虫相同, 外生殖器淡褐黄色。

正模♂, 浙江安吉龙王山, 1995-07-13, 吴鸿采。配模♀, 浙江安吉龙王山, 1995-07-13, 吴鸿采; 副模 2♂♂, 同正模; 1♂, 浙江安吉龙王山, 1995-07-16, 吴鸿采; 1♂, 浙江安吉龙王山, 1995-07-18, 吴鸿采; 1♂, 浙江开化古田山, 1992-07-17, 吴鸿采; 1♂, 浙江庆元百山祖, 1993-08-21, 吴鸿采; 1♂, 浙江庆元百山祖, 1993-10-30, 吴鸿采。

新种与中华埃菌蚊 *E. sinica* Wu et Yang, 1993 相似, 但后者的生殖基节中突不明显, 尾须细长, 容易区别。

73 白云埃菌蚊 *Epicypta baiyunshana* Wu et Yang, 1997

分布: 浙江安吉龙王山, 河南。

74 基枝埃菌蚊, 新种 *Epicypta basiramifera* Wu et Yang, sp. nov. (图 61~62)

雄 翅长 2.2~3.3 mm。头部须和口器黄色; 头后部褐色; 触角柄节、梗节黄色, 鞭节淡褐色。前胸背板具 4 根长刚毛; 中胸盾片黄色, 具 3 条多少分离的黑褐色宽纵带; 中胸上前侧片长约为宽的 1.4 倍; 小盾片暗褐色, 中线黄色, 具 6 根长刚毛; 中胸后侧片具 2 根长刚毛。翅黄

突最长, 亚

胸背板具 2
的 1.2 倍;

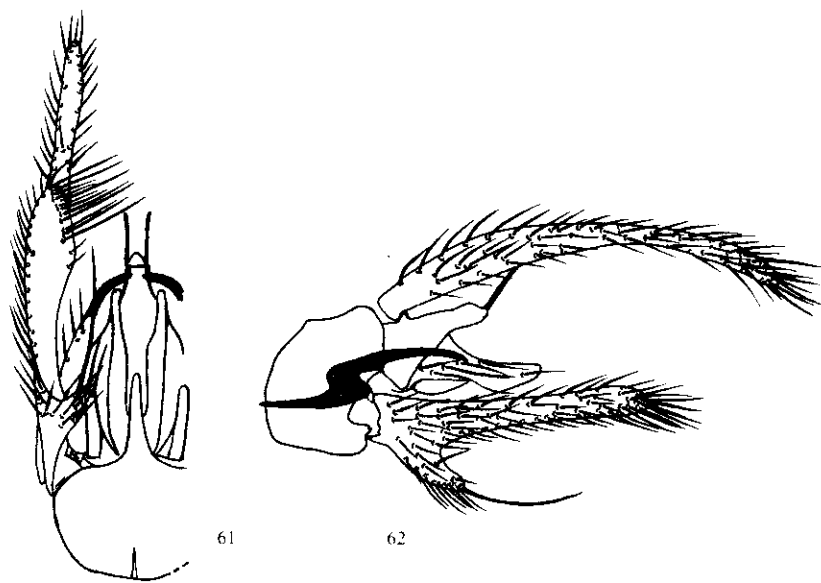


图 61~62 基枝埃菌蚊, 新种 *Epicypta basiramifera* Wu et Yang, sp. nov.

61. 雄外生殖器, 腹视 62. 雄外生殖器, 侧视

脉终于 R₅
具 1p-d; 中

色透明, 无斑纹; C 脉终于 R₅ 脉; 横脉 r-m 略长于 M 脉主干; cb 脉下面具 0~2 长毛。平衡棒黄色。足黄色; 后腿节端部暗褐色; 后基节端后部有一黑褐色大斑; 前胫节具 2p-d; 中胫节具 5d, 4a, 4~5v, 1p; 后胫节具 6d, 5a, 5~6p。腹部背板深褐色, 第 3~5 节前缘宽黄色; 腹板 3~5 节黄色, 其余淡褐色。外生殖器淡褐色。

正模♂, 浙江安吉龙王山, 1995-07-20, 吴鸿采。副模 1♂, 浙江安吉龙王山, 1995-07-13, 吴鸿采; 1♂, 浙江安吉龙王山, 1995-07-14, 吴鸿采; 5♂♂, 浙江安吉龙王山, 1995-07-18, 吴鸿采; 1♂, 浙江开化古田山, 1992-07-17, 陈学新采; 1♂, 浙江开化古田山, 1992-07-17, 马云采; 2♂♂, 浙江开化古田山, 1992-07-17, 吴鸿采; 1♂, 浙江开化古田山, 1992-07-21, 吴鸿采; 2♂♂, 浙江开化古田山, 1992-07-25, 吴鸿采; 7♂♂, 浙江开化古田山, 1992-10-28, 邓一飞采; 3♂♂, 浙江开化古田山, 1992-10-28, 吴鸿采; 5♂♂, 浙江开化古田山, 1992-10-29, 邓一飞采; 4♂♂, 浙江开化古田山, 1992-10-29, 吴鸿采; 2♂♂, 浙江开化古田山, 1994-09-27, 何俊华采; 4♂♂, 浙江庆元百山祖, 1993-10-29, 吴鸿采。

新种的尾须极细长, 生殖刺腹突细长且基部有一具粗长端刚毛的内向侧支, 在本属中有独特性。

75 陈氏埃菌蚊 *Epicypa cheni* Wu et Yang, 1993

分布: 浙江安吉龙王山, 浙江、福建。

76 斧状埃菌蚊, 新种 *Epicypa dolabriforma* Wu et Yang, sp. nov. (图 63~65)

雄: 翅长 3.1~4.1 mm。头部须和口器黄色; 头后部暗褐色; 触角柄节、梗节黄色, 鞭节褐色。前胸背板具 4 根长刚毛; 中胸盾片黑褐色, 前缘及肩角褐黄色; 中胸上前侧片长约为宽的 1.2 倍; 小盾片暗褐色, 具 4 根长刚毛; 中胸后侧片具 3 根长刚毛。翅黄色透明, tb 脉及 M₁ 脉之前的翅面淡褐色; C 脉略伸过或终于 R₅ 脉; 横脉 r-m 约与 M 脉主干等长; tb 脉下面具 1~3 长毛。平衡棒黄色。足黄色, 中、后腿节端部及中、后胫节端部暗褐色; 前胫节具 2p-d; 中胫节具 5~6d, 3a, 4v, 1p; 后胫节具 6~7d, 5a, 5p。腹部背板和腹板褐色。外生殖器褐色。

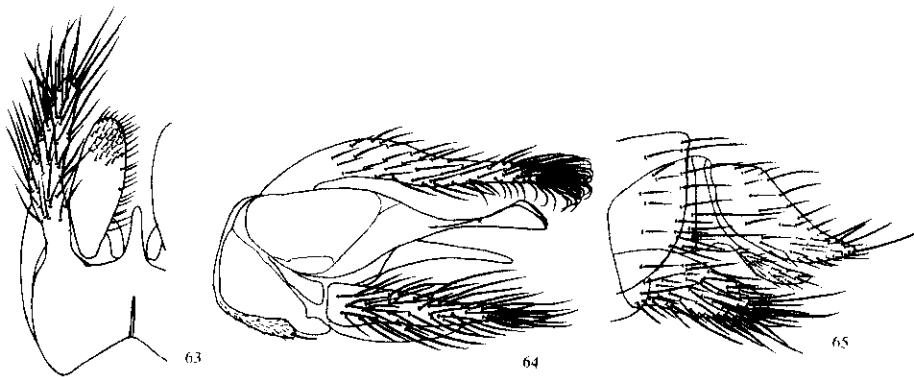


图 63~65 斧状埃菌蚊, 新种 *Epicypa dolabriforma* Wu et Yang, sp. nov.

63. 雄外生殖器, 腹视 64. 雄外生殖器, 侧视 65. 雌外生殖器, 侧视

雌: 翅长 3.6 mm。色型和特征与雄虫相同, 外生殖器淡褐黄色

正模♂, 浙江安吉龙王山, 1995-10-17, 吴鸿采。配模♀, 同正模; 副模 8♂♂, 同正模; 1♂, 浙江安吉龙王山, 1995-07-20, 吴鸿采; 1♂, 浙江安吉龙王山, 1995-10-18, 吴鸿采; 2♂♂, 浙江开化古田山, 1992-10-28, 邓一飞采; 1♂, 浙江开化古田山, 1992-10-29, 吴鸿采;

2♂♂, 浙江开化古田山; 1♂, 福建武夷山挂墩, 略相似, 但后者的侧突

77 伸长埃菌蚊, 新种

雄: 翅长 2.4~2.9 mm。基部黄色, 其余淡褐色; 小盾片长约为宽的 1.3 倍; 小盾片中斑存在; C 脉略伸过中胫节; tb 脉下面具 2 长毛; 中胫节端部、后腿节端 2/5、中胫节 3v; 后胫节具 6d, 6a, 1p



图 66

雌: 翅长 2.6~2.9 mm

正模♂, 浙江安吉龙王山, 1995-10-17, 吴鸿采; 副模 1♂, 浙江安吉龙王山, 1995-10-18, 吴鸿采; 1♂, 浙江安吉龙王山, 1995-07-20, 吴鸿采; 1♂, 浙江安吉龙王山, 1995-10-18, 吴鸿采; 1♂, 浙江安吉龙王山, 1995-07-14, 吴鸿采; 1♂, 浙江安吉龙王山, 1995-07-13, 吴鸿采; 1♂, 浙江安吉龙王山, 1995-07-14, 吴鸿采; 1♂, 浙江安吉龙王山, 1995-07-18, 吴鸿采; 1♂, 浙江安吉龙王山, 1995-07-17, 陈学新采; 1♂, 浙江安吉龙王山, 1995-07-17, 马云采; 2♂♂, 浙江开化古田山, 1992-07-17, 吴鸿采; 1♂, 浙江开化古田山, 1992-07-21, 吴鸿采; 2♂♂, 浙江开化古田山, 1992-07-25, 吴鸿采; 7♂♂, 浙江开化古田山, 1992-10-28, 邓一飞采; 3♂♂, 浙江开化古田山, 1992-10-28, 吴鸿采; 5♂♂, 浙江开化古田山, 1992-10-29, 邓一飞采; 4♂♂, 浙江开化古田山, 1992-10-29, 吴鸿采; 2♂♂, 浙江开化古田山, 1994-09-27, 何俊华采; 4♂♂, 浙江庆元百山祖, 1993-10-29, 吴鸿采。

新种与 *E. nigro* 腹突短小, 可以区别。

1995-07-13,
17-18, 吴鸿
7, 马云采;
, 吴鸿采;
邓一飞采;
邓一飞采;
何俊华采;
属中有独

2♂♂, 浙江开化古田山, 1992-10-29, 邓一飞采; 1♂, 浙江庆元百山祖, 1993-10-26, 吴鸿采;
1♂, 福建武夷山挂墩, 1991-10-07, 吴鸿采。新种与分布于贝劳的 *E. palauensis* Colless, 1966
略相似, 但后者的侧突端部分支, 容易区别。

77 伸长埃菌蚊, 新种 *Epicypa extensa* Wu et Yang, sp. nov. (图 66-68)

雄: 翅长 2.4~2.9 mm。头部须和口器褐黄色; 头后部深褐色; 触角柄节、梗节和第 1 鞭节
基部黄色, 其余淡褐色。前胸背板具 3 根长刚毛; 中胸盾片黑褐色, 前缘黄色; 中胸上前侧片长
约为宽的 1.3 倍; 小盾片黑褐色, 具 4 根长刚毛; 中胸后侧片具 1 根长刚毛。翅黄色透明, 褐色
中斑存在; C 脉略伸过 R_5 脉; 横脉 r-m 长约为 M 脉主干的 1.0~1.7 倍; Cu 脉又在 M 脉叉之
内; tb 脉下面具 2 长毛。平衡棒黄色。足褐黄色, 中基节基部、后基节基 1/3 及端 1/3、中腿节
端部、后腿节端 2/5、中胫节端部及后胫节端部均为暗褐色; 前胫节具 1p-d; 中胫节具 5d, 4a,
3v; 后胫节具 6d, 6a, 1p。腹部背板暗褐色; 腹板褐色。外生殖器淡褐色。

色, 鞭节褐
约为宽的
脉及 M_1 脉
面具 1~3
d; 中胫节

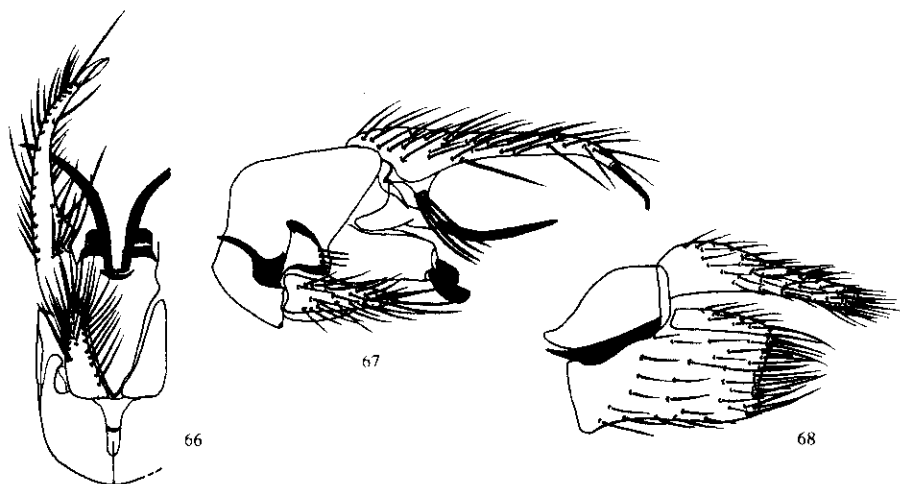


图 66~68 伸长埃菌蚊, 新种 *Epicypa extensa* Wu et Yang, sp. nov.

66. 雄外生殖器, 腹视 67. 雄外生殖器, 侧视 68. 雌外生殖器, 侧视

雌: 翅长 2.6~2.9 mm。色型和特征与雄虫相同, 外生殖器淡褐色。

正模♂, 浙江安吉龙王山, 1995-10-18, 吴鸿采。配模♀, 浙江安吉龙王山, 1995-07-20, 吴
鸿采; 副模 1♂, 浙江安吉龙王山, 1995-07-14, 吴鸿采; 1♂ 2♀♀, 浙江安吉龙王山, 1995-07-
18, 吴鸿采; 1♂, 浙江安吉龙王山, 1995-07-20, 吴鸿采; 4♂♂ 1♀, 浙江安吉龙王山, 1995-10-
17, 吴鸿采; 1♂, 浙江开化古田山, 1992-07-21, 吴鸿采; 2♀♀, 浙江开化古田山, 1992-10-28,
邓一飞采; 1♀, 浙江开化古田山, 1992-10-28, 吴鸿采; 2♂♂, 浙江开化古田山, 1992-10-29, 吴
鸿采; 2♂♂, 北京门头沟小龙门, 1992-08-02, 杨集昆采。

新种与 *E. nigroflava* (Senior-White, 1922) 相似, 但后者的中胸盾片前 2/5 黄色, 生殖刺
腹突短小, 可以区别。

同正模;
吴鸿采;
吴鸿采;

78 美丽埃菌蚊, 新种 *Epicypsta formosa* Wu et Yang, sp. nov. (图 69~70)

雄: 翅长 2.7~2.9 mm。头部须和口器黄色; 头后部褐黄色; 触角淡黄褐色。前胸背板具 3~5 根长刚毛; 中胸盾片黄色, 具 3 条黑褐色宽纵带; 中胸上前侧片长约为宽的 1.3 倍; 小盾片暗褐色, 两侧黄色, 具 4 根长刚毛; 中胸后侧片具 2~3 根长刚毛。翅黄色透明, 无斑纹; C 脉终于 R₅ 脉; 横脉 r-m 长约为 M 脉主干的 1.5~2.0 倍; tb 脉下面具 5 长毛。平衡棒黄色。足黄色; 前胫节具 2p-d; 中胫节具 5d, 3~5a, 4v, 1p; 后胫节具 6d, 5a, 4p。腹部背板褐色, 两侧淡褐色; 腹板淡褐色。外生殖器淡褐色。

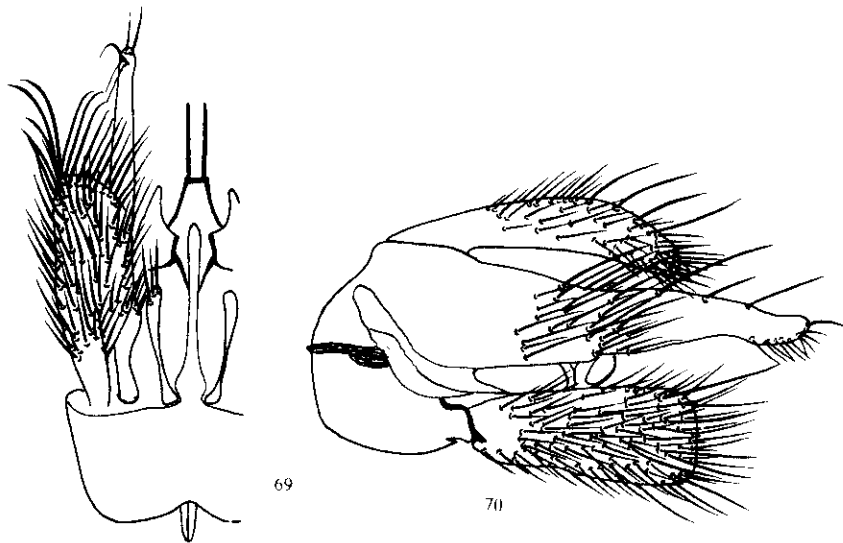


图 69~70 美丽埃菌蚊, 新种 *Epicypsta formosa* Wu et Yang, sp. nov.
69. 雄外生殖器, 腹视 70. 雄外生殖器, 侧视

正模♂, 浙江安吉龙王山, 1995-07-18, 吴鸿采。副模 1♂, 同正模; 1♂, 浙江安吉龙王山, 1995-07-13, 吴鸿采。

新种与分布于欧洲的 *E. torquata* Matile, 1977 相似, 但后者的中胸盾片黑褐色, 中胫节具 2~3v, 生殖基节中突中等长, 亚侧突宽大无毛, 可以区别。

79 福建埃菌蚊 *Epicypsta fujianana* Wu et Yang, 1993

分布: 浙江安吉龙王山, 福建。

80 刀状埃菌蚊 *Epicypsta gladiiforma* Wu et Yang, 1993

分布: 浙江安吉龙王山, 福建。

81 龙栖埃菌蚊 *Epicypsta longqishana* Wu et Yang, 1993

分布: 浙江安吉龙王山, 浙江。

82 居山埃菌蚊 *Epicypsta*

分布: 浙江安吉

83 黄黑埃菌蚊 *Epicypsta*

分布: 浙江安吉

84 细小埃菌蚊, 新种

雄: 翅长 2.0~2.2 mm。头部须和口器黄色, 其余淡褐色。前胸背板具 3~5 根长刚毛; 中胸盾片黄色, 具 3 条黑褐色宽纵带; 中胸上前侧片长约为宽的 1.3 倍; 小盾片暗褐色, 两侧黄色, 具 4 根长刚毛; 中胸后侧片具 2~3 根长刚毛。翅黄色透明, 无斑纹; C 脉终于 R₅ 脉; 横脉 r-m 长约为 M 脉主干的 1.5~2.0 倍; tb 脉下面具 1~2 长毛。平衡棒黄色。足黄色; 前胫节具 2p-d; 中胫节具 5d, 3~5a, 4v, 1p; 后胫节具 6d, 5a, 4p。腹部背板深褐色, 两侧淡褐色; 腹板淡褐色。外生殖器淡褐色。



71.

雌: 翅长 2.4~2.6 mm。

正模♂, 浙江安吉龙王山, 1995-07-18, 吴鸿采; 副模 19♂♂, 同正模; 1♂, 浙江安吉龙王山, 1995-07-13, 吴鸿采; 1♀, 浙江安吉龙王山, 1995-07-20, 吴鸿采; 1♀, 浙江安吉龙王山, 1995-07-17, 马云采; 1♂, 浙江安吉龙王山, 1995-07-29, 吴鸿采; 1♀, 福建

新种与近裸埃菌蚊相似, 但生殖刺腹突端边圆滑, 可

85 密毛埃菌蚊 *Epicypsta*

分布: 浙江安吉龙

82 居山埃菌蚊 *Epicypa monticola* Wu, 1995

分布:浙江安吉龙王山,浙江。

83 黄黑埃菌蚊 *Epicypa nigroflava* (Senior-White, 1922) 中国新纪录

分布:浙江安吉龙王山;印度尼西亚,斯里兰卡,菲律宾。

84 细小埃菌蚊,新种 *Epicypa pusilla* Wu, sp. nov. (图 71~73)

雄:翅长 2.0~2.6 mm。头部须和口器黄色;头后部黄色;触角柄节、梗节和第 1 鞭节基部黄色,其余淡褐色。前胸背板具 2~3 根长刚毛;中胸盾片黄色,具 3 条深褐色宽纵带;中胸上前侧片长约为宽的 1.3~1.7 倍;小盾片黄色,后缘褐色,具 4 根长刚毛;中胸后侧片具 2~3 根长刚毛。翅黄色透明,无斑纹;C 脉略伸过 R₅ 脉;横脉 r-m 长约为 M 脉主干的 1.2 倍;tb 脉下面具 1~2 长毛。平衡棒黄色。足黄色;前胫节具 1p-d;中胫节具 5d, 3a, 3v, 1p;后胫节具 6d, 5a, 3p。腹部背板深褐色;腹板褐色。外生殖器淡褐色。

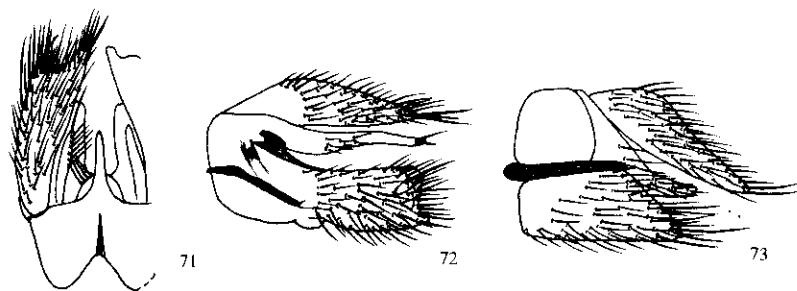


图 71~73 细小埃菌蚊,新种 *Epicypa pusilla* Wu, sp. nov.

71. 雄外生殖器,腹视 72. 雄外生殖器,侧视 73. 雌外生殖器,侧视

雌:翅长 2.4~2.6 mm。色型和特征与雄虫相同,外生殖器淡褐黄色。

正模♂,浙江安吉龙王山,1995-07-18,吴鸿采。配模♀,浙江安吉龙王山,1995-07-14,吴鸿采;副模 19♂♂,同正模;3♂♂,1♀,浙江安吉龙王山,1995-07-13,吴鸿采;18♂♂,4♀♀,同配模,2♂♂,浙江安吉龙王山,1995-07-16,吴鸿采;3♂♂,1♀,浙江安吉龙王山,1995-07-20,吴鸿采;1♂,浙江安吉龙王山,1996-05-14,吴鸿采;1♂,浙江开化古田山,1992-07-17,马云采;1♂,浙江庆元百山祖,1993-10-03,吴鸿采;2♂♂,浙江庆元百山祖,1993-10-29,吴鸿采;1♀,福建武夷山挂墩,1991-10-07,吴鸿采。

新种与近裸埃菌蚊 *E. subnuda* sp. nov. 相似,但后者的翅具中斑,侧突端部无刚毛,生殖刺腹突端边圆滑,可以区别。

85 密毛埃菌蚊 *Epicypa scopata* Wu, 1995

分布:浙江安吉龙王山,浙江。

86 简单埃菌蚊 *Epicypa simplex* Wu, 1995

分布:浙江安吉龙王山,浙江。

87 中华埃菌蚊 *Epicypa sinica* Wu et Yang, 1993

分布:浙江安吉龙王山,浙江、福建。

88 截形埃菌蚊,新种 *Epicypa truncata* Wu, sp. nov. (图 74~76)

雄:翅长 3.2~3.4 mm。头部须和口器黄色;头后部褐色;触角淡褐色。前胸背板具 4 根长刚毛;中胸盾片暗褐色,肩角及前缘黄色;中胸上前侧片长约为宽的 1.1 倍;小盾片深褐色,具 4 根长刚毛;中胸后侧片具 3 根长刚毛。翅黄色透明,褐色中斑存在;C 脉终于 R_5 脉;横脉 r-m 长约为 M 脉主干的 1.5~2.0 倍;tb 脉下面具 2~3 长毛。平衡棒黄色。足黄色;前胫节具 2p-d;中胫节具 5d, 3a, 3~4v, 1p;后胫节具 6d, 5a, 5~8p。腹部背板深褐色;腹板褐色。外生殖器淡褐色。

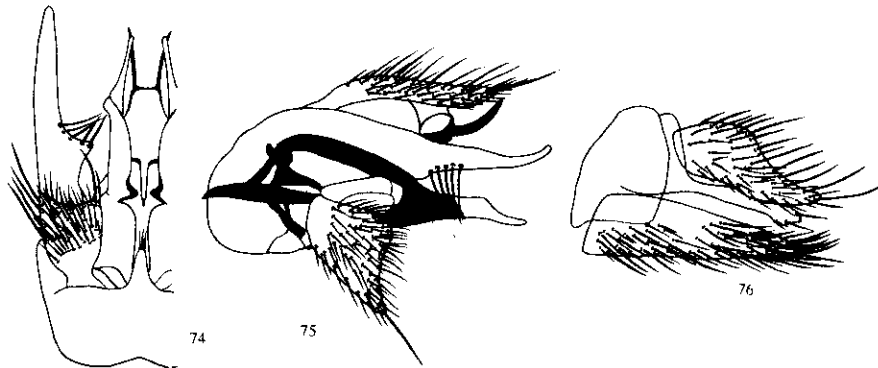


图 74~76 截形埃菌蚊,新种 *Epicypa truncata* Wu, sp. nov.
74. 雄外生殖器,腹视 75. 雄外生殖器,侧视 76. 雌外生殖器,侧视

雌:翅长 3.5~3.8 mm。色型和特征与雄虫相同,外生殖器褐色。

正模♂,浙江安吉龙王山,1995-07-13,吴鸿采。配模♀,福建武夷山挂墩,1991-10-07,吴鸿采;副模 1♂,浙江开化古田山,1992-07-21,吴鸿采;1♂,浙江开化古田山,1992-07-25,吴鸿采;1♂,浙江开化古田山,1992-10-28,邓一飞采;4♂♂,2♀♀,同配模。

新种与宽广埃菌蚊 *E. spatiosa* sp. nov. 相似,但后者的翅无斑纹,侧突近中部无内向突起,生殖基节中突极细长,容易区别。

89 剑刺埃菌蚊,新种 *Epicypa xiphothorna* Wu et Yang, sp. nov. (图 77~79)

雄:翅长 2.7~3.1 mm。头部须和口器黄色;头后部褐黄色;触角黄色。前胸背板具 2~3 根长刚毛;中胸盾片褐黄色,具 3 条深褐色宽纵带;中胸上前侧片长约为宽的 1.2~1.4 倍;小盾片褐色,具 4~6 根长刚毛;中胸后侧片具 2 根长刚毛。翅黄色透明,无斑纹;C 脉终于 R_5

脉;横脉 r-m 长约为 M 脉主干的 1.5~2.0 倍;tb 脉下面具 2~3 长毛。平衡棒黄色。足黄色;前胫节具 2p-d;中胫节具 5d, 3a, 3~4v, 1p;后胫节具 6d, 5a, 5~8p。腹部背板深褐色;腹板褐色。外生殖器淡褐色。

雌:翅长 2.9 mm

正模♂,浙江安吉龙王山,1995-07-13,吴鸿采;副模 1♂,同正模,1993-10-25,吴鸿采。

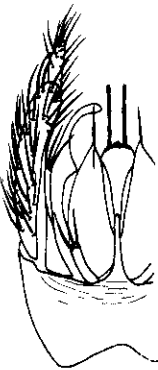


图 77

新种与分布于欧洲突渐尖且密被刚毛,正

DIPTERA

(Zhejiang Forestry)

The present paper reports 45 species are new to the world. The type specimens are deposited in the Institute of Zoology, Zhejiang University, Hangzhou (119.4°E), Zhejiang Province, China. The new species

脉;横脉 r m 长约为 M 脉主干的 1.2~2.0 倍;tb 脉下面具 1~2 长毛。平衡棒黄色。足黄色,后基节端后部具 1 黑褐色大斑;后腿节端部褐色;前胫节具 1~2p-d;中胫节具 5d, 2~3a, 2~5v, 1p;后胫节具 6~7d, 6a, 3~5p。腹部背板褐色,两侧及前缘色稍浅;腹板浅褐色。外生殖器浅褐色。

雌:翅长 2.9 mm。色型和特征与雄虫相同,外生殖器淡黄褐色。

正模♂,浙江安吉龙王山,1995-07-18,吴鸿采。配模♀,浙江安吉龙王山,1995-07-14,吴鸿采;副模 1♂,同正模;1♂,浙江开化古田山,1992-10-29,邓一飞采;1♂,浙江庆元百山祖,1993-10-25,吴鸿采。

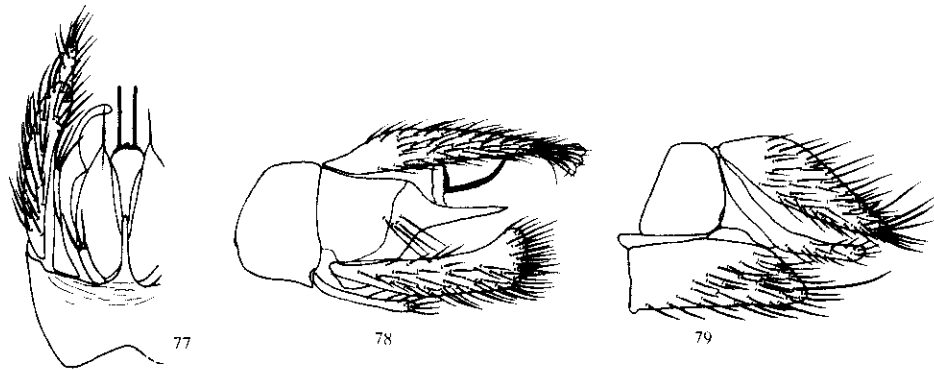


图 77-79 剑刺埃菌蚊,新种 *Epicypta xiphathorna* Wu, sp. nov.

77. 雄外生殖器,腹视 78. 雄外生殖器,侧视 79. 雌外生殖器,侧视

新种与分布于欧美的 *E. timnophila* Chanaller, 1981 相近似,但后者的中胸盾片褐色,侧突渐尖且密被刚毛,亚侧突短小而不明显,可以区别。

DIPTERA: DIADOCIDIIDAE, KEROPLATIDAE ADN MYCETOPHILIDAE

WU Hong

HE Jun-Hua

(Zhejiang Forestry College, Lin'an 311300) (Zhejiang Agricultural University, Hangzhou 310029)

YANG Chi-Kun

(China Agricultural University, Beijing 100094)

The present paper deals with fungus gnats from Longwangshan Nature Reserve (30.4° N, 119.4° E), Zhejiang Province. Totally 3 family, 11 genera and 89 species are recorded, in which 45 species are new to science (33 new species are described and figured here in, 12 new species will be presented in separate papers) and 8 species are reported for the first time from China. The type specimens are deposited in Zhejiang Forestry College and China Agricultural University respectively.

The new species are dignosed as follow.

1 *Mycetophila absqua* Wu et He, sp. nov. (Figs. 1-2)

Male. Wing length 2.5 mm. Head dark brown. Antennae brown, with scape, pedicel and basal 1/3 of 1st flagellar yellow. Palpi brownish yellow, with the third segment broadest. Proepisternum and mesepimeron with 3 setae. Mesoscutum dark brown. Mesanepisternum 0.8 time as long as wide. Wing clear yellow; cross vein r-m slightly longer than stalk of median fork. Long basal cross vein tb bearing 1 setula below. Legs yellow, but apical 1/4 of hind femur brown. Middle tibia with 5d, 1a-d, 2a, 3v, 2p. Hind tibia with 7d, 6a, 4p. Abdominal tergites dark brown. Sternites brown. The male genitalia are shown in Figs. 1-2.

Holotype ♂, Longwangshan, 800-1300 m, Zhejiang, 16-07-1995, WU Hong.

This species is similar to *M. alberta* Curran, 1927, but differs from the latter by the structure of ventral stylomere and dorsal stylomere of gonostylus.

2 *Mycetophila aequilonga* Wu et He, sp. nov. (Figs. 3-4)

Male. Wing length 2.9 mm. Head blackish brown. Antennae brown, with scape, pedicel and 1st flagellar yellow. Palpi yellow, with the third segment broadest. Proepisternum with 3 setae. Mesoscutum blackish brown, with humeral angles yellow. Mesanepisternum 0.8 time as long as wide. Mesepimeron with 4 setae. Wing clear yellow, with central spot. Subapical brownish spot extending to M₂. Cross vein r-m slightly longer than stalk of median fork. Long basal cross vein tb without setula. Legs yellow, but apical parts of hind femur, middle and hind tibiae brown. Middle tibia with 5d, 1a-d, 3a, 4v, 4p. Hind tibia with 6d, 7a, 3p. Abdominal tergites and sternite dark brown. The male genitalia are shown in Figs. 3-4.

Holotype ♂, Longwangshan, Zhejiang, 12-05-1996, WU Hong.

This species is somewhat similar to *M. bimaculata* (Fabricius, 1804), but the structure of ventral stylomere and dorsal stylomere of gonostylus are very different.

3 *Mycetophila annulara* Wu et He, sp. nov. (Figs. 5-6)

Male. Wing length 2.4-2.7 mm. Head brown. Antennae brownish. Palpi yellow, with the third segment broadest. Proepisternum and mesepimeron with 3 setae. Mesoscutum black brown. Mesanepisternum 0.8 time as long as wide. Wing clear yellow, with central spot. C extending beyond R₅ to distance of one fifth from R₅ to M₁. Cross vein r-m 1.1-1.9 times as long as stalk of median fork. Long basal cross vein tb bearing 7-9 setulae below. Legs yellow, but dorsal side and apical part of hind femur brown. Middle tibia with 5-6d, 3a, 3v. Hind tibia with 6d, 6-8a. Abdominal tergites dark brown. Sternites brown. The male genitalia are shown in Figs. 5-6.

Holotype ♂, Guadun, Wuyishan, Fujian Province, 07-10-1991, WU Hong. Paratypes 3 ♂♂, Longwangshan, Zhejiang, 20-07-1995, WU Hong.

This species is allied to *M. sicyoideusa* sp. nov., but can be separated from the latter by the structure of ventral stylomere of gonostylus.

4 *Mycetophila calvuscuta* Wu et He, sp. nov. (Figs. 7-8)

Male. Wing length 2.6-2.8 mm. Head black brown. Antennae brown, with scape, pedicel and basal half of flagellar yellow. Palpi brownish yellow, with the third segment broadest.

Proepisternum with 3 setae. Mesoscutum 1.1 times as long as wide. Mesanepisternum 1.1 times as long as wide. Wing clear yellow, with central spot. Subapical brownish spot extending to M₂. Cross vein r-m slightly longer than stalk of median fork. Long basal cross vein tb bearing 1 setula below. Legs yellow, but apical 1/4 of hind femur brown. Middle and hind femora and tibiae brown. Middle tibia with 5d, 1a-d, 2a, 3v, 2p. Hind tibia with 7d, 6a, 4p. Abdominal tergites dark brown. Sternites brown. The male genitalia are shown in Figs. 7-8.

Holotype ♂, Longwangshan, Zhejiang, 29-07-1995, WU Hong.

This species is similar to *M. alberta* Curran, 1927, but differs from the latter by the structure of ventral stylomere and dorsal stylomere of gonostylus.

5 *Mycetophila caudata* Wu et He, sp. nov. (Figs. 9-10)

Male. Wing length 2.5 mm. Head blackish brown. Antennae brown, with scape, pedicel and 1st flagellar yellow. Palpi yellow, with the third segment broadest. Proepisternum with 3 setae. Mesoscutum brown, with humeral angles yellow. Mesanepisternum 0.8 time as long as wide. Mesepimeron with 4 setae. Wing clear yellow, with central spot. Subapical brownish spot extending to M₂. Cross vein r-m slightly longer than stalk of median fork. Long basal cross vein tb without setula. Legs yellow, but apical parts of hind femur, middle and hind tibiae brown. Middle tibia with 5d, 1a-d, 3a, 2v, 2p. Hind tibia with 6d, 7a, 3p. Abdominal tergites and sternite dark brown. The male genitalia are shown in Figs. 9-10.

Holotype ♂, Longwangshan, Zhejiang, 12-05-1996, WU Hong. Paratype 1 ♂, the same locality, 500 m, Zhejiang, 28-07-1992, WU Hong.

This species is similar to *M. alberta* Curran, 1927, but differs from the latter by the structure of ventral stylomere and dorsal stylomere of gonostylus.

6 *Mycetophila clypeata* Wu et He, sp. nov. (Figs. 11-12)

Male. Wing length 2.5 mm. Head blackish brown. Antennae brown, with scape, pedicel and basal 1/3 of 1st flagellar yellow. Palpi brownish yellow, with the third segment broadest. Proepisternum and mesepimeron with 3 setae. Mesoscutum black brown. Mesanepisternum 0.8 time as long as wide. Mesepimeron with 4 setae. Wing clear yellow, with central spot. Subapical brownish spot extending to M₂. Cross vein r-m slightly longer than stalk of median fork. Long basal cross vein tb without setula. Legs yellow, but apical parts of hind femur, middle and hind tibiae brown. Middle tibia with 5d, 1a-d, 3a, 2v, 2p. Hind tibia with 6d, 7a, 3p. Abdominal tergites and sternite dark brown. The male genitalia are shown in Figs. 11-12.

Holotype ♂, Longwangshan, Zhejiang, 29-07-1995, WU Hong.

This species is allied to *M. alberta* Curran, 1927, but differs from the latter by the structure of ventral stylomere and dorsal stylomere of gonostylus.

Proepisternum with 3 setae. Mesoscutum black brown, with humeral angles yellow. Mesanepisternum 1.1 times as long as wide. Mesepimeron with 5 setae. Wing clear yellow, with central spot. Subapical brownish spot extending to M_1 . Cross vein r-m slightly shorter than stalk of median fork. Long basal cross vein tb bearing 3 setulae below. Legs yellow, but dorsal sides of middle and hind femora and apical part of hind femur black brown. Middle tibia with 5d, 3a, 3v, 1p. Hind tibia with 5d, 7a. Abdominal tergites blackish brown, with posterior margin of tergite 6 wide yellow. Sternites brownish. The male genitalia are shown in Figs. 7-8.

Holotype ♂, Longwangshan, Zhejiang, 14-06-1996, WU Hong. Paratype 1 ♂, Gutianshan, Zhejiang, 29-10-1992, WU Hong.

This species is similar to *M. vesca* (Laffoon, 1957), it differs from the latter by the wing with central spot, the structure of ventral stylomere of gonostylus and others of genitalia.

5 *Mycetophila caudatusaceus* Wu et He, sp. nov. (Figs. 9-10)

Male. Wing length 2.6-3.3 mm. Head brown. Antennae brownish, with scape, pedicel and first two flagellum yellow. Palpi yellow, with the third segment broadest. Proepisternum with 3 setae. Mesoscutum brown to blackish brown, with humeral angles yellow. Mesanepisternum long subequal wide. Mesepimeron with 3-4 setae. Wing clear yellow, with central spot, veins brown. Subapical brownish spot stopping before M_1 . Cross vein r-m slightly longer than stalk of median fork. Long basal cross vein tb bearing 0-1 setula below. Legs yellow, but dorsal side and apical 1/5 of hind femur brown, apical parts of middle and hind tibiae brown. Middle tibia with 5d, 3a, 2v, 2p. Hind tibia with 5d, 7a, 1p. Abdominal tergites brown. Sternites brownish. The male genitalia are shown in Figs. 9-10.

Holotype ♂, Longwangshan, 800-1200 m, Zhejiang, 20-07-1996, WU Hong. Paratypes 1 ♂, the same locality as holotype, 800-1300 m, 16-07-1995, WU Hong; 4 ♂♂, Gutianshan, 500 m, Zhejiang, 28-10-1992, DENG Yi-Fei; 2 ♂♂, Gutianshan, 500 m, Zhejiang, 28-10-1992, WU Hong.

This species is similar to *M. caudata* Staeger, 1840, but differs by the shape of ventral stylomere and dorsal stylomere of gonostylus.

6 *Mycetophila clypeata* Wu et He, sp. nov. (Figs. 11-12)

Male. Wing length 2.9 mm. Head black brown. Antennae brown, with scape, pedicel and basal 1/3 of 1st flagellar yellowish brown. Palpi yellow, with the third segment broadest. Proepisternum and mesepimeron with 3 setae. Mesoscutum black brown. Mesanepisternum 1.2 times as long as wide. Wing clear yellow, cross vein r-m slightly longer than stalk of median fork. Long basal cross vein tb without setula. Legs yellow, but apical 1/5 of hind femur black brown, apical parts of middle and hind tibiae brown. Middle tibia with 5d, 1a-d, 3a, 3v, 3p. Hind tibia with 6d, 7a, 2p. Abdominal tergites dark brown. Sternites brown. The male genitalia are shown in Figs. 11-12.

Holotype ♂, Longwangshan, Zhejiang, 16-07-1995, WU Hong.

This species is allied to *M. mitis* Johannsen, 1912, but can be separated from the latter by

the wing without central spot. The shape of dorsal stylomere of gonostylus is also different.

7 *Mycetophila drepana* Wu et He, sp. nov. (Figs. 13-14)

Male. Wing length 4.2 mm. Head brown. Antennae brown, with scape, pedicel and base of 1st flagellar yellow. Palpi yellow, with the third segment broadest. Proepisternum and mesepimeron with 4 setae. Mesoscutum blackish brown, with humeral angles yellow. Mesanepisternum 1.2 times as long as wide. Wing clear yellow, with central spot. Subapical brownish spot small and undistinct. Cross vein r-m slightly longer than stalk of median fork. Long basal cross vein tb bearing 3 setulae below. Legs yellow, but apical parts of middle and hind femora, middle and hind tibiae brown. Middle tibia with 6d, 1a-d, 3a, 3v, 4p. Hind tibia with 5d (and add 12 weak d), 8a, 5p. Abdomen dark brown. The male genitalia are shown in Figs. 13-14.

Holotype ♂, Longwangshan, 1100 m, Zhejiang, 14-06-1996, WU Hong. Paratype 1 ♂, Moganshan, Zhejiang, 18-04-1992, WU Hong.

This species is similar to *M. lenta* Johannsen, 1912, but differs from the latter by ventral stylomere of gonostylus with many setae, dorsal stylomere of gonostylus with dense long setae apically.

8 *Mycetophila genuflexuosa* Wu et He, sp. nov. (Figs. 15-16)

Male: Wing length 2.6-3.1 mm. Head dark brown. Antennae brown, with scape, pedicel and basal 1/3 of 1st flagellar yellow. Palpi brownish yellow, with the third segment broadest. Proepisternum with 3 setae. Mesoscutum dark brown, with humeral angles yellow. Mesanepisternum long subequal wide. Mesepimeron with 4 setae. Wing clear yellow, with central spot. Subapical brownish spot extending to M_2 . Cross vein r-m 2.0 times as long as stalk of median fork. Long basal cross vein tb without setula. Legs yellow, but apical parts of middle and hind femora and all tibiae brown. Middle tibia with 6a, 1a-d, 3a, 3v, 4p. Hind tibia with 5-6d, 7a, 2p. Abdominal tergites brown. Sternites brownish. The male genitalia are shown in Figs. 15-16.

Holotype ♂, Longwangshan, 450-500 m, Zhejiang, 17-10-1995, WU Hong. Paratypes 1 ♂, the same locality as holotype, 16-07-1995, WU Hong; 1 ♂, the same locality as holotype, 500-600 m, 13-07-1995, WU Hong; 2 ♂♂, the same locality as holotype, 400-500 m, 14-07-1995, WU Hong; 1 ♂, the same locality as holotype, 1100 m, 14-06-1996, WU Hong.

This species is allied to *M. dentata* (Lundstrom, 1913), but differs from the latter by dorsal stylomere of gonostylus curved as C, inner margin of ventral stylomere of gonostylus with 2 broad and 1 long setae.

9 *Mycetophila glabra* Wu et He, sp. nov. (Figs. 17-18)

Male. Wing length 3.4 mm. Head dark brown. Antennae brown, with scape, pedicel and first two flagellum yellow. Palpi yellow, with the third segment broadest. Proepisternum with 3 setae. Mesoscutum dark brown. Mesanepisternum long subequal wide. Mesepimeron with 4 setae. Wing clear yellow, with central spot. Subapical brownish spot extending to M_1 . Cross vein r-m 2.0 times as long as stalk of median fork. Long basal cross vein tb without setula. Legs yellow, but apical 1/4 of hind femur brown. Middle tibia with 6d, 1a-d, 3a, 3v, 4p. Hind tibia

with 11d, 8a, 3p. Abdominal genitalia are shown in

Holotype ♂, Long

This species is well known in the mountains and ventral stylomere

10 *Mycetophila gratiosa*

Male. Wing length

base of 1st flagellar yellow. Proepisternum and mesepimeron with 4 setae. Mesanepisternum long subequal wide. Cross vein r-m 2/3 times as long as stalk of median fork below. Legs yellow, but apical parts of middle and hind femora brown. Hind tibia with 6d, 5a, 5p. Abdominal genitalia are shown in Figs. 19-20.

Holotype ♂, Long

This species is similar to *M. dentata* (Lundstrom, 1913) by dorsal stylomere and dorsal stylomere

11 *Mycetophila intonsa*

Male. Wing length

pedicel and 1st flagellar yellow. Mesepimeron with 3 setae. Proepisternum long subequal wide. Cross vein r-m 2.0 times as long as stalk of median fork. Long basal cross vein tb without setula. Apical part of hind femur brown. Middle tibia with 3a-d, 7d, 2p. Abdominal genitalia are shown in Figs. 21-23.

Holotype ♂, Long

2 ♂♂, the same as holotype, 1995, WU Hong; 1 ♂, Longwangshan, Zhejiang, 20-04-1984, YANG Chi-Kun.

This species is allied to *M. dentata* (Lundstrom, 1913) by coloration and structure.

12 *Mycetophila laticornis*

Male. Wing length

pedicel and 1st or 1st two flagellum with 4 setae. Mesanepisternum long subequal wide. Cross vein r-m 0.8 time as long as wide

with 11d, 8a, 3p. Abdominal tergites brown. Sternites yellow to yellowish brown. The male genitalia are shown in Figs. 17-18.

Holotype ♂, Longwangshan, 490-700 m, Zhejiang, 18-10-1995, WU Hong.

This species is well characterized especially by the structure of posterior margin of gonocoxites and ventral stylomere of gonostylus.

10 *Mycetophila grata* Wu et He, sp. nov. (Figs. 19-20)

Male. Wing length 3.1 mm. Head dark brown. Antennae brown, with scape, pedicel and base of 1st flagellar yellow. Palpi brownish yellow, with the third segment broadest. Proepisternum and mesepimeron with 3 setae. Mesoscutum brownish yellow, with 3 brown broad longitudinal stripes. Mesanepisternum long subequal wide. Wing clear yellow, with central spot. Cross vein r-m 2/3 times as long as stalk of median fork. Long basal cross vein tb bearing 5-6 setulae below. Legs yellow, but apical part of hind coxa brown. Middle tibia with 5d, 2a, 2v, 2p. Hind tibia with 6d, 5a, 2p. Abdominal tergites dark brown. Sternites slightly lighter. The male genitalia are shown in Figs. 19-20.

Holotype ♂, Longwangshan, 1300 m, Zhejiang, 13-05-1996, WU Hong.

This species is similar to *M. alata* Guthrie, 1917, but differs by the structure of ventral stylomere and dorsal stylomere of gonostylus.

11 *Mycetophila intortusa* Wu et He, sp. nov. (Figs. 21-23)

Male. Wing length 2.3-2.9 mm. Head blackish brown. Antennae brown, with scape, pedicel and 1st flagellar yellow. Palpi yellow, with the third segment broadest. Proepisternum and mesepimeron with 3 setae. Mesoscutum dark brown, with humeral angles yellow. Mesanepisternum long subequal wide. Wing clear yellow, with central spot. Cross vein r-m slightly shorter than stalk of median fork. Long basal cross vein tb bearing 2 setulae below. Legs yellow, but apical part of hind femur brown. Middle tibia with 4d, 1a-d 2a, 3v, 2p. Hind tibia with 7a, 3a-d, 7d, 2p. Abdominal tergites brown. Sternites brownish. The male genitalia are shown in Figs. 21-23.

Holotype ♂, Longwangshan, 400-500 m, Zhejiang, 14-07-1995, WU Hong. Paratypes 2♂♂, the same as holotype; 13♂♂, the same locality as holotype, 800-1300 m, 16-07-1995, WU Hong; 1♂, Moganshan, Zhejiang, 18-04-1992, WU Hong; 1♂, Yutou, Jiangshan, Zhejiang, 20-04-1993, ZHOU Zhang'en; 1♂, Wudangshan, Hubei Province, 29-05-1984, YANG Chi-Kun.

This species is allied to *M. paradisa* sp. nov., but differs from the latter by cerci rotatory, coloration and structure of gonostylus are also different.

12 *Mycetophila latichaeta* Wu et He, sp. nov. (Figs. 24-25)

Male. Wing length 3.3-4.2 mm. Head blackish brown. Antennae brown, with scape, pedicel and 1st or 1st two flagellum yellow. Palpi yellow, with the third segment broadest. Proepisternum with 4 setae. Mesoscutum blackish brown, with humeral angles yellow. Mesanepisternum 0.8 time as long as wide. Mesepimeron with 5 setae. Wing clear yellow, with central spot. Sub-

apical brownish spot extending to M_2 . Cross vein r-m 2.0 times as long as stalk of median fork. Long basal cross vein tb bearing 0-1 setula below. Legs yellow, but apical parts of middle tibia, hind femur and tibia brown. Middle tibia with 6d, 1a-d, 3a, 3v, 3p. Hind tibia with 12d, 7a, 4p. Abdominal tergites dark brown. Sternites brown. The male genitalia are shown in Figs. 24-25.

Holotype ♂, Longwangshan, 1300 m, Zhejiang, 13-05-1996, WU Hong. Paratypes 23♂♂, the same as holotype; 1♂, the same locality as holotype, 400-500 m, 14-07-1995, WU Hong; 1♂, the same locality as holotype, 20-07-1995, WU Hong; 2♂♂, the same locality as holotype, 12-05-1996, WU Hong; 2♂♂, the same locality as holotype, 700 m, 14-06-1996, WU Hong; 2♂♂, Moganshan, Zhejiang, 18-04-1992, WU Hong; 1♂, Guadun, Wuyishan, Fujian Province, 07-10-1991, WU Hong.

This species is similar to *M. vigena* sp. nov., but can be separated from the latter by the following points: Mesepimeron with 5 setae, tb bearing 0-1 setula below, hind coxa yellow, ventral stylomere of gonostylus with more than 4 broad setae apically.

13 *Mycetophila longwangshana* Wu et He, sp. nov. (Figs. 26-29)

Male. Wing length 2.9 mm. Head blackish brown. Antennae brown to dark brown. Palpi yellow, with the third segment broadest. Proepisternum with 3 setae. Mesoscutum brown, with 3 dark brown broad longitudinal stripes. Mesepimeron with 5 setae. Wing clear yellowish, with central spot. Cross vein r-m slightly longer than stalk of median fork. Long basal cross vein tb bearing 12 setulae below. Legs yellow, but fore and middle femora slightly darker, apical part of hind femur brown. Middle tibia with 4d, 3a, 4p. Hind tibia with 5d, 4a, 7p. Abdomen brown to black brown. The male genitalia are shown in Figs. 26-29.

Holotype ♂, Longwangshan, 1300 m, Zhejiang, 13-05-1996, WU Hong.

This species is allied to *M. chandleri* Wu, 1997, but differs from the latter by proximal posterior process longer than distal posterior process. The structure of gonocoxites and intromittent organ are also different.

14 *Mycetophila oligodona* Wu et He, sp. nov. (Figs. 30-32)

Male. Wing length 3.3 mm. Head brownish yellow. Antennae brownish, with scape, pedicel and 1st flagellar brownish yellow. Palpi yellow, with the third segment broadest. Proepisternum and mesepimeron with 4 setae. Mesoscutum brownish yellow. Mesanepisternum long subequal wide. Wing clear yellow, with central spot. Subapical brownish cloud undistinct. Cross vein r-m slightly longer than stalk of median fork. Long basal cross vein tb bearing 9 setulae below. Legs yellow. Middle tibia with 6d, 5a, 4p. Hind tibia with 6d, 7a, 8p. Abdominal tergites 1-4 brown, tergites 5-6 black brown. Sternites slightly lighter. The male genitalia are shown in Figs. 30-32.

Holotype ♂, Longwangshan, Zhejiang, 18-07-1995, WU Hong.

This species is similar to *M. curvicaudata* Wu, 1997, but can be separated from the latter by the wing length 3.3 mm, ventral stylomere of gonostylus with only one strong black spine and

basal part of dorsal style.

15 *Mycetophila parvula* Wu et He, sp. nov.

Male. Wing length 2.5 mm. Head brownish yellow. Antennae brownish, with scape, pedicel and base of 1st flagellar yellowish. Palpi yellow, with the third segment broadest. Proepisternum and mesepimeron with 3 setae. Mesoscutum brownish yellow. Mesanepisternum long subequal wide. Wing clear yellow, with central spot. Cross vein r-m slightly longer than stalk of median fork. Long basal cross vein tb bearing 12 setulae below. Legs yellow, but apical 1/2 of dorsal femur brown. Middle tibia with 6d, 3a, 4p. Hind tibia with 6d, 3a, 4p. Abdomen brown to black brown. The male genitalia are shown in Figs. 33-35.

Holotype ♂, Longwangshan, Zhejiang, 13-05-1996, WU Hong. Paratypes 3♂♂, the same as holotype; 1♂, the same locality as holotype, 14-07-1995, WU Hong; 17♂♂, the same locality as holotype, 12-05-1996, WU Hong; 1♂, Moganshan, 380 m, 18-04-1992, WU Hong.

This species is similar to *M. vigena* sp. nov., but can be separated from the latter by the hind tibia with 3a-d, 4p.

16 *Mycetophila prioris* Wu et He, sp. nov.

Male. Wing length 2.5 mm. Head brownish yellow. Antennae brownish, with scape, pedicel and base of 1st flagellar brownish yellow. Palpi yellow, with the third segment broadest. Proepisternum and mesepimeron with 4 setae. Mesoscutum brownish yellow. Mesanepisternum long subequal wide. Wing clear yellow, with central spot. Cross vein r-m slightly longer than stalk of median fork. Long basal cross vein tb bearing 12 setulae below. Legs yellow, but base of hind femur brown. Middle tibia with 6d, 3a, 3v. Hind tibia with 6d, 3a, 3v. Abdomen brown to black brown. The male genitalia are shown in Figs. 36-38.

Holotype ♂, Baishan, Zhejiang, 14-07-1995, WU Hong. Paratypes 1♂, Longwangshan, 1300 m, 13-05-1996, WU Hong; 1♂, Longwangshan, 1300 m, 10-10-1995, WU Hong.

This species is similar to *M. vigena* sp. nov., but can be separated from the latter by the size of body and the structure of gonocoxites and intromittent organ.

17 *Mycetophila schispha* Wu et He, sp. nov.

Male. Wing length 2.5 mm. Head brownish yellow. Antennae brownish, with scape, pedicel and base of 1st flagellar yellowish. Palpi yellow, with the third segment broadest. Proepisternum and mesepimeron with 4 setae. Mesoscutum yellow, with 3 dark brown broad longitudinal stripes. Mesepimeron with 5 setae. Wing clear yellowish, with central spot. Cross vein r-m slightly longer than stalk of median fork. Long basal cross vein tb bearing 12 setulae below. Legs yellow, but fore and middle femora slightly darker, apical part of hind femur brown. Middle tibia with 4d, 3a, 4p. Hind tibia with 5d, 4a, 7p. Abdomen brown to black brown. The male genitalia are shown in Figs. 39-41.

basal part of dorsal stylomere of gonostylus without dense setae.

15 *Mycetophila paradisa* Wu et He, sp. nov. (Figs. 33-35)

Male. Wing length 2.4-3.0 mm. Head dark brown. Antennae brown, with pedicel and base of 1st flagellar yellow. Palpi yellow, with the third segment broadest. Proepisternum and mesepimeron with 3 setae. Mesoscutum yellow, with 3 dark brown broad longitudinal stripes. Mesanepisternum long subequal wide. Wing clear yellow, with central spot. Cross vein r-m slightly longer than stalk of median fork. Long basal cross vein tb without setula. Legs yellow, but apical 1/2 of dorsal side of hind femur brown. Middle tibia with 5-6d, 1a-d, 2a, 3v, 2p. Hind tibia with 6d, 3a-d, 7a. Abdomen dark brown. The male genitalia are shown in Figs. 33-35.

Holotype ♂, Longwangshan, 800-1200 m, Zhejiang, 20-07-1995, WU Hong. Paratypes 3♂♂, the same as holotype; 6♂♂, the same locality as holotype, 1200-1500 m, 20-07-1995, WU Hong; 17♂♂, the same locality as holotype, 800-1300 m, 16-07-1995, WU Hong; 1♂, the same locality as holotype, 500-800 m, 18-07-1995, WU Hong; 1♂, the same locality as holotype, 12-05-1996, WU Hong; 1♂, Gutianshan, Zhejiang, 17-07-1992, WU Hong; 1♂, Moganshan, 380 m, Zhejiang, 02-05-1991, WU Hong.

This species is similar to *M. forcipata* Lundstrom, 1913, but differs from the latter by the hind tibia with 3a-d, the structure of ventral stylomere of gonostylus is also different.

16 *Mycetophila prionoda* Wu et Yang, sp. nov. (Figs. 36-37)

Male. Wing length 2.5-3.0 mm. Head dark brown. Antennae brownish, with scape, pedicel and base of 1st flagellar brownish yellow. Proepisternum with 3 setae. Mesoscutum yellow, with 3 black brown broad longitudinal stripes. Mesanepisternum 1.1 times as long as wide. Mesepimeron with 4 setae. Wing clear yellow, with central spot. Subapical brownish spot extending to Rs. C extending beyond R₅ to distance of one fifth from R₅ to M₁. Cross vein r-m slightly longer than stalk of median fork. Long basal cross vein tb bearing 15-17 setulae below. Legs yellow, but base of hind coxa brown, dorsal side and apical part of hind femur dark brown. Middle tibia with 6d, 3a, 3v. Hind tibia with 5d, 7a. Abdominal tergites black brown. Sternites brown. The male genitalia are shown in Figs. 36-37.

Holotype ♂, Baishanzu, Zhejiang, 05-1994, WU Hong. Paratypes 1♂, Longwangshan, Zhejiang, 14-07-1995, WU Hong; 2♂♂, Longwangshan, Zhejiang, 16-07-1995, WU Hong; 1♂, Longwangshan, Zhejiang, 20-07-1995, WU Hong; 1♂, Longwangshan, Zhejiang, 17-10-1995, WU Hong.

This species is somewhat similar to *M. propinqua* Walker, 1848, but differs from the latter by the size of body and structure of ventral stylomere and dorsal stylomere of gonostylus.

17 *Mycetophila schistocauda* Wu et Yang, sp. nov. (Figs. 38-40)

Male. Wing length 2.1-2.7 mm. Head brown, with sides yellow. Antennae brown, with scape, pedicel and base of 1st flagellar yellow. Proepisternum and mesepimeron with 3 setae. Mesoscutum yellow, with 3 black brown broad longitudinal stripes. Mesanepisternum 1.3 times as

long as wide. Wing clear yellow, with central spot. Cross vein r-m subequal stalk of median fork. Long basal cross vein tb without setula. Legs yellow, but apical part of middle femur and apical 1/3 of hind femur brown. Middle tibia with 5d, 1a-d, 2a, 2v, 2p. Hind tibia with 8d, 6a. Abdominal tergites brown. Sternites slightly lighter. The male genitalia are shown in Figs. 38-39.

Female: Wing length 2.4-2.8 mm. Coloration and characters as in male. The female terminalia is shown in Fig. 40.

Holotype ♂, Longwangshan, Zhejiang, 17-10-1995, WU Hong. Allotype ♀, Guadun, Wuyishan, Fujian, 07-10-1991, WU Hong; paratypes 2 ♂♂, the same as holotype; 2 ♀♀, the same as allotype; 1 ♂, the same locality as holotype, 20-07-1995, WU Hong; 1 ♂, Gutianshan, Zhejiang, 16-07-1992, WU Hong; 2 ♂♂, Gutianshan, Zhejiang, 17-07-1992, WU Hong; 27 ♂♂, Gutianshan, Zhejiang, 28-10-1992, DENG Yi-Fei; 33 ♂♂, Gutianshan, Zhejiang, 28-10-1992, WU Hong; 1 ♂, Gutianshan, Zhejiang, 29-10-1992, DENG Yi-Fei; 5 ♂♂, Gutianshan, Zhejiang, 29-10-1992, WU Hong; 7 ♂♂, Gutianshan, Zhejiang, 27-09-1994, HE Jun-Hua; 1 ♂, Longqishan, Fujian Province, 09-10-1991, WU Hong.

This species is allied to *M. bohartorum* (Laffoon, 1957), but differs from the latter by the structure of gonocoxites and dorsal stylomere of gonostylus.

18 *Mycetophila scopata* Wu et Yang, sp. nov. (Figs. 41-42)

Male. Wing length 3.2-3.8 mm. Head dark brown. Antennae brown, with scape, pedicel and basal half of 1st flagellar yellow. Palpi yellow, with the third segment broadest. Proepisternum and mesepimeron with 4 setae. Mesoscutum blackish brown, with humeral angles yellow. Mesanepisternum 0.9 time as long as wide. Wing clear yellow, with central spot. Subapical brownish spot extending to M₂. Cross vein r-m 2.0 times as long as stalk of median fork. Long basal cross vein tb without setula. Legs yellow, but apical part of hind femur brown. Middle tibia with 6d, 1a-d, 3a, 3v, 3p. Hind tibia with 5d, 7a, 4p. Abdominal tergites brown. Sternites brownish. The male genitalia are shown in Figs. 41-42.

Holotype ♂, Longwangshan, Zhejiang, 12-05-1996, WU Hong. Paratypes 1 ♂, the same locality as holotype, 400-500 m, 14-07-1995, WU Hong; 1 ♂, Moganshan, Zhejiang, 18-04-1992, WU Hong.

This species is similar to *M. hetschko* Landrock, 1918, but can be separated from the latter by ventral stylomere of gonostylus with one strong inner process. The structure of dorsal stylomere of gonostylus is also different distinctly.

19 *Mycetophila scutata* Wu et Yang, sp. nov. (Figs. 43-44)

Male. Wing length 3.4 mm. Head dark brown. Antennae brown, with scape, pedicel and base of 1st flagellar yellow. Palpi yellow, with the third segment broadest. Proepisternum and mesepimeron with 3 setae. Mesoscutum dark brown, with humeral angles and lateral margins yellow. Mesanepisternum long subequal wide. Wing clear yellow, with central spot. Subapical brownish spot extending to M₁. Cross vein r-m 2.0 times as long as stalk of median fork. Long basal cross vein tb without setula. Legs yellow, but posterior side of hind coxa with 1 dark brown

marking apically, apical part of hind femur brown. Middle tibia with 6d, brown, with anterior margin of gonocoxite shown in Figs. 43-44.

Holotype ♂, paratype

This species is allied to *M. bohartorum* (Laffoon, 1957), but differs from the latter by the structure of gonocoxites and dorsal stylomere of gonostylus.

20 *Mycetophila sentinella* Wu et Yang, sp. nov.

Male. Wing length 3.2-3.8 mm. Head dark brown. Antennae brown, with scape, pedicel and base of 1st flagellar yellow. Palpi yellow, with the third segment broadest. Proepisternum and mesepimeron with 4 setae. Mesoscutum blackish brown, with humeral angles yellow. Mesanepisternum 0.9 time as long as wide. Wing clear yellow, with central spot. Subapical brownish spot extending to M₂. Cross vein r-m 2.0 times as long as stalk of median fork. Long basal cross vein tb without setula. Legs yellow, but apical part of hind femur brown. Middle tibia with 5d, 2a-d, 6a. Abdominal tergites brown. Sternites brownish. The male genitalia are shown in Figs. 45-46.

Holotype ♂, Longwangshan, Zhejiang, 28-10-1992, WU Hong; 1 ♂, Guadun, Wuyishan, Fujian, 07-10-1991, WU Hong.

This species is similar to *M. bohartorum* (Laffoon, 1957), but differs from the latter by the structure of gonocoxites and dorsal stylomere of gonostylus.

21 *Mycetophila sicyoptera* Wu et Yang, sp. nov.

Male. Wing length 3.2-3.8 mm. Head dark brown. Antennae brown, with scape, pedicel and basal half of 1st flagellar yellow. Palpi yellow, with the third segment broadest. Proepisternum and mesepimeron with 4 setae. Mesoscutum blackish brown, with humeral angles yellow. Mesanepisternum 0.9 time as long as wide. Wing clear yellow, with central spot. Subapical brownish spot extending to M₂. Cross vein r-m 1.1-2.0 times as long as stalk of median fork. Long basal cross vein tb without setula. Legs yellow, but apical part of hind femur brown. Middle tibia with 6d, 7a. Abdominal tergites brown. Sternites brownish. The male genitalia are shown in Figs. 47-48.

Holotype ♂, Longwangshan, Zhejiang, 12-05-1996, WU Hong; 2 ♂♂, the same locality as holotype, 400-500 m, 14-07-1995, WU Hong; 2 ♂♂, the same locality as holotype, 18-04-1992, WU Hong; 1 ♂, Moganshan, Zhejiang, 18-04-1992, WU Hong.

marking apically, apical part of middle femur and tibia, hind femur and tibia dark brown. Middle tibia with 6d, 1a-d, 3a, 2v, 4p. Hind tibia with 5d, 7a, 2p. Abdominal tergites dark brown, with anterior margins yellow. Sternites brownish to brown. The male genitalia are shown in Figs. 43-44.

Holotype ♂, paratype 1♂, Longwangshan, 1300 m, Zhejiang, 13-05-1996, WU Hong.

This species is allied to *M. atlantia* Nielsen, 1966, but differs from the latter by the posterior margin of gonocoxites concave, inner surface of ventral stylomere of gonostylus with black structure.

20 *Mycetophila senticosa* Wu et Yang, sp. nov. (Figs. 45-46)

Male. Wing length 2.0-2.6 mm. Head black brown. Antennae blackish brown, with scape, pedicel and base of 1st flagellar yellow. Palpi yellow, with the third segment broadest. Proepisternum and mesepimeron with 3 setae. Mesoscutum black brown. Mesanepisternum 1.2 times as long as wide. Wing clear yellow; cross vein r-m slightly shorter than stalk of median fork. Long basal cross vein tb without setula. Legs yellow, but posterior side of hind coxa brown apically, apical 1/4 of hind femur black brown. Middle tibia with 5d, 1a-d, 2a, 2v, 2p. Hind tibia with 5d, 2a-d, 6a. Abdominal tergites dark brown. Sternites brownish yellow. The male genitalia are shown in Figs. 45-46.

Holotype ♂, Longwangshan, Zhejiang, 12-05-1996, WU Hong. Paratypes 1♂, Gutianshan, Zhejiang, 28-10-1993, DENG Yi-Fei; 1♂, Baishanzu, Zhejiang, 20-08-1993, WU Hong; 1♂ Guadun, Wuyishan, Fujian Province, 07-10-1991, WU Hong.

This species is somewhat similar to *M. immaculata* Dziedzicki, 1884, but structure of ventral stylomere and dorsal stylomere of gonostylus is different.

21 *Mycetophila sicyoideusa* Wu et Yang, sp. nov. (Figs. 47-48)

Male. Wing length 2.4-2.9 mm. Head dark brown. Antennae yellowish brown. Palpi yellow, with the third segment broadest. Proepisternum and mesepimeron with 3 setae. Mesoscutum black brown, with humeral angles yellow. Mesanepisternum 1.2 times as long as wide. Wing clear yellow, with central spot. C extending beyond R_5 to distance of one fifth from R_5 to M_1 . Cross vein r-m 1.1-2.0 times as long as stalk of median fork. Long basal cross vein tb bearing 7-14 setulae below. Legs yellow, but dorsal sides of middle and hind femora, apical 1/3 of hind femur, apical part of middle and hind tibiae black brown. Middle tibia with 6d, 3a, 3v. Hind tibia with 6d, 7a. Abdominal tergites black brown. Sternites dark brown. The male genitalia are shown in Figs. 47-48.

Holotype ♂, Longwangshan, Zhejiang, 20-07-1995, WU Hong. Paratypes 1♂, the same locality as holotype, 12-07-1995, WU Hong; 4♂♂, the same locality as holotype, 14-07-1995, WU Hong; 2♂♂, the same locality as holotype, 16-07-1995, WU Hong; 1♂, the same locality as holotype, 18-07-1995, WU Hong; 2♂♂, the same locality as holotype, 17-10-1995, WU Hong; 1♂, Gutianshan, Zhejiang, 17-07-1992, CHEN Xue-Xin; 2♂♂, Gutianshan, Zhejiang, 22-07-1992, WU

Hong; 1♂, Gutianshan, Zhejiang, 25-07-1992, WU Hong; 3♂♂, Gutianshan, Zhejiang, 28-10-1992, DENG Yi-Fei; 2♂♂, Gutianshan, Zhejiang, 28-10-1992, WU Hong; 1♂, Gutianshan, Zhejiang, 27-09-1994, HE Jun-Hua; 1♂, Baishanzu, Zhejiang, 15-08-1993, WU Hong; 2♂♂, Guadun, Wuyishan, Fujian Province, 07-10-1991, WU Hong.

This species is similar to *M. prionoda* sp. nov., but can be separated from the latter by mesoscutum black brown and without longitudinal stripes, the shape of dorsal stylomere of gonostylus never squarish.

22 *Mycetophila spatiosa* Wu et Yang, sp. nov. (Figs. 49-50)

Male. Wing length 3.0 mm. Head dark brown. Antennae brown, with scape, pedicel and 1st flagellar yellow. Palpi brownish yellow, with the third segment broadest. Proepisternum with 3 setae. Mesoscutum black brown. Mesanepisternum 0.8 time as long as wide. Mesepimeron with 4 setae. Wing clear yellow, with central spot. Subapical cloud undistinct. Cross vein r-m 2 times as long as stalk of median fork. Long basal cross vein tb without setula. Legs yellow, but apical part of hind femur dark brown. Middle tibia with 6d, 1a-d, 3a, 3v, 1p. Hind tibia with 5d(8 weak d), 6a. Abdominal tergites dark brown. Sternites 1, 4-6 brown; sternites 2-3 yellow. The male genitalia are shown in Figs. 49-50.

Holotype♂, Longwangshan, Zhejiang, 12-05-1996, WU Hong.

This species is somewhat similar to *M. venusta* (Laffoon, 1957), but differs from the latter by structure of ventral stylomere and dorsal stylomere of gonostylus.

23 *Mycetophila stupposa* Wu et Yang, sp. nov. (Figs. 51-52)

Male. Wing length 2.2-2.7 mm. Head blackish brown. Antennae brown, with scape, pedicel and base of 1st flagellar brownish yellow. Palpi brownish yellow, with the third segment broadest. Proepisternum and mesepimeron with 3 setae. Mesoscutum blackish brown, with humeral angles yellow. Mesanepisternum 1.1 time as long as wide. Wing clear yellow; cross vein r-m 0.3 time as long as stalk of median fork. Long basal cross vein tb without setula. Legs brownish yellow, but apical 1/5 of hind femur blackish brown. Middle tibia with 5d, 2a, 1v, 2p. Hind tibia with 5d, 6a. Abdominal tergites blackish brown. Sternites brown. The male genitalia are shown in Figs. 51-52.

Holotype♂, paratype 1♂, Longwangshan, 400-500 m, Zhejiang, 14-07-1995, WU Hong.

This species is allied to *M. comata* (Laffoon, 1957), but differs from the latter by inner posterior process of ventral stylomere of gonostylus with dense long setae. Dorsal stylomere of gonostylus is also different.

24 *Mycetophila vigena* Wu et Yang, sp. nov. (Figs. 53-54)

Male. Wing length 3.3-3.9 mm. Head dark brown. Antennae brown, with scape, pedicel and 1st flagellar yellow. Palpi yellowish brown, with the third segment broadest. Proepisternum and mesepimeron with 4 setae. Mesoscutum dark brown, with lateral margins yellow and 2 yellow longitudinal stripes. Mesanepisternum 0.8 time as long as wide. Wing clear yellow, with

central spot. Subapical cloud undistinct. Cross vein r-m 2 times as long as stalk of median fork. Long basal cross vein tb without setula. Legs yellow, but apical part of hind femur dark brown. Middle tibia with 6d, 1a-d, 3a, 3v, 1p. Hind tibia with 5d(8 weak d), 6a. Abdominal tergites dark brown. Sternites 1, 4-6 brown; sternites 2-3 yellow. The male genitalia are shown in Figs. 53-54.

Holotype♂, paratype 1♂, Longwangshan, Zhejiang, 12-05-1996, WU Hong.

This species is similar to *M. venusta* (Laffoon, 1957), but can be separated from the latter by structure of ventral stylomere and dorsal stylomere of gonostylus.

25 *Epicrypta acuminata* Wu et Yang, sp. nov. (Figs. 55-56)

Male. Wing length 3.0 mm. Head dark brown. Antennae brown, with scape, pedicel and 1st flagellar yellow. Palpi brownish yellow, with the third segment broadest. Proepisternum with 3 setae. Mesoscutum black brown. Mesanepisternum 0.8 time as long as wide. Mesepimeron with 4 setae. Wing clear yellow, with central spot. Subapical cloud undistinct. Cross vein r-m 1.3 times as long as stalk of median fork. Long basal cross vein tb without setula. Legs yellow. Fore tibia with 1p-d, 6d, 4a-d, 6a, 6-8p. Hind tibia with 5d, 6a. Abdominal tergites dark brown. Sternites 1, 4-6 brown; sternites 2-3 yellow. The male genitalia are shown in Figs. 55-56.

Holotype♂, paratype 1♂, Longwangshan, Zhejiang, 12-05-1996, WU Hong.

This species is similar to *Epicrypta acuminata* (Wu et Yang, 1996), but differs from the latter by structure of ventral stylomere and dorsal stylomere of gonostylus. The male genitalia are shown in Figs. 55-56. Holotype♂, paratype 1♂, Longwangshan, Zhejiang, 12-05-1996, WU Hong; 1♂, Longwangshan, Zhejiang, 17-07-1996, WU Hong; 3♂♂, Gutianshan, Zhejiang, 25-07-1992, WU Hong; 2♂♂, 1♀, Gutianshan, Zhejiang, 29-10-1992, WU Hong.

This species is similar to *Epicrypta acuminata* (Wu et Yang, 1996), but differs from the latter by blackish brown longitudinal stripes.

26 *Epicrypta anjiensis* Wu et Yang, sp. nov. (Figs. 57-58)

Male. Wing length 3.0 mm. Head dark brown. Antennae brown, with scape, pedicel and 1st flagellar yellow. Palpi brownish yellow, with the third segment broadest. Proepisternum with 3 setae. Mesoscutum blackish brown, with humeral angles yellow. Mesanepisternum 1.1 time as long as wide. Wing clear yellow; cross vein r-m 0.3 time as long as stalk of median fork. Long basal cross vein tb without setula. Legs brownish yellow, but apical 1/5 of hind femur blackish brown. Middle tibia with 5d, 2a, 1v, 2p. Hind tibia with 5d, 6a. Abdominal tergites blackish brown. Sternites brown. The male genitalia are shown in Figs. 57-58.

central spot. Subapical brownish spot extending to M_2 . Cross vein r-m 4.0-5.0 times as long as stalk of median fork. Long basal cross vein tb bearing 4-11 setulae below. Legs yellow, but posterior of hind coxa with 1 dark brown marking apically, apical part of hind femur, middle and hind tibiae dark brown. Middle tibia with 6d, 1a-d, 3a, 3v, 2p. Hind tibia with 11d, 7a, 3p. Abdominal tergites dark brown, with posterior margins of tergites 2-6 yellow. Sternites brown. The male genitalia are shown in Figs. 53-54.

Holotype ♂, paratypes 3 ♂♂, Longwangshan, 1300 m, Zhejiang, 13-05-1996, WU Hong. Paratype 1 ♂, Moganshan, Zhejiang, 18-04-1992, WU Hong.

This species is allied to *M. dentata* (Lundstrom, 1913) and *M. finlandica* Edwards, 1913, but can be separated by structure of dorsal stylocere of gonostylus.

25 *Epicyptha acuminata* Wu et Yang, sp. nov. (Figs. 55-57)

Male. Wing length 2.6-3.5 mm. Head dark brown. Antennae brown. Pronotum with 3-4 setae. Mesoscutum yellow, with 3 blackish brown broad longitudinal stripes. Mesanepisternum 1.3 times as long as wide. Mesepimeron with 2 setae. Wing clear brownish yellow. Cross vein r-m 1.6 times as long as stalk of median fork. Long basal cross vein tb bearing 6-8 setulae below. Legs yellow. Fore tibia with 1p-d. Middle tibia with 5d, 2a-d, 3a, 5-7v, 1p. Hind tibia with 6d, 4a-d, 6a, 6-8p. Abdominal tergites brown, with lateral sides yellowish brown. The male genitalia are shown in Figs. 55-56.

Female. Wing length 2.8-3.0 mm. Coloration and characters as in male. The female terminalia is shown in Fig. 57.

Holotype ♂, Longwangshan, Zhejiang, 18-07-1995, WU Hong. Allotype ♀, the same locality as holotype, 14-07-1995, WU Hong; paratypes 3 ♂♂, Gutianshan, Zhejiang, 17-07-1992, WU Hong; 1 ♂, Gutianshan, Zhejiang, 17-07-1992, CHEN Xue-Xin; 2 ♂♂, Gutianshan, Zhejiang, 17-07-1992, MA Yun; 2 ♂♂ 1 ♀, Gutianshan, Zhejiang, 21-07-1992, WU Hong; 3 ♂♂, Gutianshan, Zhejiang, 22-07-1992, WU Hong; 8 ♂♂ 2 ♀♀, Gutianshan, Zhejiang, 25-07-1992, WU Hong; 2 ♂♂, Gutianshan, Zhejiang, 27-07-1992, WU Hong; 2 ♂♂, 1 ♀, Gutianshan, Zhejiang, 28-10-1992, DENG Yi-Fei; 1 ♂, Gutianshan, Zhejiang, 29-10-1992, DENG Yi-Fei; 2 ♂♂, Gutianshan, Zhejiang, 29-10-1992, WU Hong.

This species is similar to *M. fissusa* sp. nov., but differs by mesoscutum yellow, with blackish brown longitudinal stripes, lateral sub-processes longest and slender.

26 *Epicyptha anjiensis* Wu et Yang, sp. nov. (Figs. 58-60)

Male. Wing length 2.9-3.3 mm. Head dark brown. Antennae yellowish brown. Pronotum and mesepimeron with 2 setae. Mesoscutum yellow, with 3 black brown broad longitudinal stripes. Mesanepisternum 1.2 times as long as wide. Wing clear yellow; cross vein r-m slightly longer than stalk of median fork. Long basal cross vein tb bearing 2 setulae below. Legs yellow. Fore tibia with 1p-d. Middle tibia with 6d, 2a-d, 3a, 4v. Hind tibia with 6d, 3a-d, 5a, 2p. Abdominal tergites brown, with lateral margins and anterior angles of tergites 3-5 and posterior

margin of tergite 6 yellow. Sternites brownish. The male genitalia are shown in Figs. 58-59.

Female. Wing length 3.2 mm. Coloration and characters as in male. The female terminalia is shown in Fig. 60.

Holotype ♂, allotype ♀, Longwangshan, Zhejiang, 13-07-1995, WU Hong. Paratypes 2♂♂, the same as holotype; 1♂, the same locality as holotype, 16-07-1995, WU Hong; 1♂, the same locality as holotype, 18-07-1995; 1♂, Gutianshan, Zhejiang, 17-07-1992, WU Hong; 1♂, Baishanzu, Zhejiang, 21-08-1993, WU Hong; 1♂, Baishanzu, Zhejiang, 30-10-1993, WU Hong.

This species is allied to *M. sinica* Wu et Yang, 1993, but can be separated by the median process distinct, cerci short.

27 *Epicypta basiramifera* Wu et Yang, sp. nov. (Figs. 61-62)

Male. Wing length 2.2-3.3 mm. Head brown. Antennae brownish, with scape and pedicel yellow. Pronotum with 4 setae. Mesoscutum yellow, with 3 black brown broad longitudinal stripes. Mesanepisternum 1.4 times as long as wide. Mesepimeron with 2 setae. Wing clear yellow; cross vein r-m slightly longer than stalk of median fork. Long basal cross vein tb bearing 0-2 setulae below. Legs yellow, but apical part of hind femur blackish brown, and posterior side of hind coxa with one large black brown marking apically. Fore tibia with 2p-d. Middle tibia with 5d, 4a, 4-5v, 1p. Hind tibia with 6d, 5a, 5-6p. Abdominal tergites dark brown, with anterior margins of tergites 3-5 yellow. Sternites brownish, but sternites 3-5 yellow. The male genitalia are shown in Figs. 61-62.

Holotype ♂, Longwangshan, Zhejiang, 20-07-1995, WU Hong. Paratypes 1♂, the same locality as holotype, 13-07-1995, WU Hong; 1♂, the same locality as holotype, 14-07-1995, WU Hong; 5♂♂ the same locality as holotype, 18-07-1995, WU Hong; 1♂, Gutianshan, Zhejiang, 17-07-1992, CHEN Xue Xin; 1♂, Gutianshan, Zhejiang, 17-07-1992, MA Yun; 2♂♂, Gutianshan, Zhejiang, 21-07-1992, WU Hong; 2♂♂, Gutianshan, Zhejiang, 25-07-1992, WU Hong; 7♂♂, Gutianshan, Zhejiang, 28-10-1992, DENG Yi-Fei; 3♂♂, Gutianshan, Zhejiang, 28-10-1992, WU Hong; 5♂♂, Gutianshan, Zhejiang, 29-10-1992, DENG Yi-Fei; 4♂♂, Gutianshan, Zhejiang, 29-10-1992, WU Hong; 2♂♂, Gutianshan, Zhejiang, 27-09-1994, HE Jun-Hua; 4♂♂, Baishanzu, Zhejiang, 29-10-1993, WU Hong.

This species is well characterized especially by the cerci extremely slender long; ventral stylomere of gonostylus slender long, inner branch of which has strong long apical seta basally.

28 *Epicypta dolabriforma* Wu et Yang, sp. nov. (Figs. 63-65)

Male. Wing length 3.1-4.1 mm. Head blackish brown. Antennae brown, with scape and pedicel yellow. Pronotum with 4 setae. Mesoscutum black brown, with anterior margin and humeral angles brownish yellow. Mesanepisternum 1.2 times as long as wide. Mesepimeron with 3 setae. Wing clear yellow, part of wing before long basal cross vein tb and M₁ brownish. C slightly extending beyond R₅. Cross vein r-m subequal stalk of median fork. Long basal cross vein tb bearing 1-3 setulae below. Legs yellow, but apical parts of middle and hind femora, api-

cal parts of middle and hind femora, 3a, 4v, 1p. Hind tibia with 6d, 5a, 5-6p. Abdominal tergites dark brown, with anterior margins of tergites 3-5 yellow. Sternites brownish, but sternites 3-5 yellow. The male genitalia are shown in Figs. 63-64.

Female. Wing length 3.2 mm. Coloration and characters as in male. The female terminalia is shown in Fig. 65.

Holotype ♂, allotype ♀, Longwangshan, Zhejiang, 13-07-1995, WU Hong. Paratypes 8♂♂, the same as holotype; 1♂, the same locality as holotype, 16-07-1995, WU Hong; 1♂, the same locality as holotype, 18-07-1995; 1♂, Gutianshan, Zhejiang, 17-07-1992, WU Hong; 1♂, Baishanzu, Zhejiang, 21-08-1993, WU Hong; 1♂, Baishanzu, Zhejiang, 30-10-1993, WU Hong.

This species is allied to *M. sinica* Wu et Yang, 1993, but can be separated by the lateral processes distinct, cerci short.

29 *Epicypta extensa* Wu et Yang, sp. nov. (Figs. 66-68)

Male. Wing length 2.2-3.3 mm. Head brown. Antennae brownish, with scape and pedicel yellow. Pronotum with 4 setae. Mesoscutum yellow, with 3 black brown broad longitudinal stripes. Mesanepisternum 1.4 times as long as wide. Mesepimeron with 2 setae. Wing clear yellow, with central cross vein r-m slightly longer than stalk of median fork. Long basal cross vein tb bearing 0-2 setulae below, but base of middle cross vein tb bearing 1 setula below. Legs yellow, but apical part of hind femur, apical 2/5 of hind coxa with one large black brown marking apically. Fore tibia with 1p-d. Middle tibia with 5d, 4a, 4-5v, 1p. Hind tibia with 6d, 5a, 5-6p. Abdominal tergites dark brown, with anterior margins of tergites 3-5 yellow. Sternites brownish, but sternites 3-5 yellow. The male genitalia are shown in Figs. 66-68.

Female. Wing length 3.2 mm. Coloration and characters as in male. The female terminalia is shown in Fig. 69.

Holotype ♂, Longwangshan, Zhejiang, 20-07-1995, WU Hong. Paratypes 1♂, the same locality as holotype, 13-07-1995, WU Hong; 1♂, the same locality as holotype, 14-07-1995, WU Hong; 5♂♂ the same locality as holotype, 18-07-1995, WU Hong; 1♂, Gutianshan, Zhejiang, 17-07-1992, CHEN Xue Xin; 1♂, Gutianshan, Zhejiang, 17-07-1992, MA Yun; 2♂♂, Gutianshan, Zhejiang, 21-07-1992, WU Hong; 2♂♂, Gutianshan, Zhejiang, 25-07-1992, WU Hong; 7♂♂, Gutianshan, Zhejiang, 28-10-1992, DENG Yi-Fei; 3♂♂, Gutianshan, Zhejiang, 28-10-1992, WU Hong; 5♂♂, Gutianshan, Zhejiang, 29-10-1992, DENG Yi-Fei; 4♂♂, Gutianshan, Zhejiang, 29-10-1992, WU Hong; 2♂♂, Gutianshan, Zhejiang, 27-09-1994, HE Jun-Hua; 4♂♂, Baishanzu, Zhejiang, 29-10-1993, WU Hong.

This species is allied to *M. sinica* Wu et Yang, 1993, but can be separated by the lateral processes distinct, cerci short.

30 *Epicypta formosa* Wu et Yang, sp. nov. (Figs. 70-72)

Male. Wing length 2.2-3.3 mm. Head brown. Antennae brownish, with scape and pedicel yellow. Pronotum with 4 setae. Mesoscutum yellow, with 3 black brown broad longitudinal stripes. Mesanepisternum 1.4 times as long as wide. Mesepimeron with 2 setae. Wing clear yellow; cross vein r-m slightly longer than stalk of median fork. Long basal cross vein tb bearing 0-2 setulae below. Legs yellow, but apical part of hind femur blackish brown, and posterior side of hind coxa with one large black brown marking apically. Fore tibia with 2p-d. Middle tibia with 5d, 4a, 4-5v, 1p. Hind tibia with 6d, 5a, 5-6p. Abdominal tergites dark brown, with anterior margins of tergites 3-5 yellow. Sternites brownish, but sternites 3-5 yellow. The male genitalia are shown in Figs. 70-72.

cal parts of middle and hind tibiae blackish brown. Fore tibia with 2p-d. Middle tibia with 5-6d, 3a, 4v, 1p. Hind tibia with 6-7d, 5a, 5p. Abdomen brown. The male genitalia are shown in Figs. 63-64.

Female. Wing length 3.6 mm. Coloration and characters as in male. The female terminalia is shown in Fig. 65.

Holotype ♂, allotype ♀, Longwangshan, Zhejiang, 17-10-1995, WU Hong. Paratypes 8♂♂, the same as holotype; 1♂, the same locality as holotype, 20-07-1995, WU Hong; 1♂, the same locality as holotype, 18-10-1995, WU Hong; 2♂♂, Gutianshan, Zhejiang, 28-10-1992, DENG Yi-Fei; 1♂, Gutianshan, Zhejiang, 29-10-1992, WU Hong; 2♂♂, Gutianshan, Zhejiang, 29-10-1992, DENG Yi-Fei; 1♂, Baishanzu, Zhejiang, 26-10-1993, WU Hong; 1♂, Guadun, Wuyishan, Fujian Province, 07-10-1991, WU Hong.

This species is somewhat similar to *M. palauensis* Colless, 1966, but differs from the latter by the lateral processes without branch.

29 *Epicypa extensa* Wu et Yang, sp. nov. (Figs. 66-68)

Male. Wing length 2.4-2.9 mm. Head dark brown. Antennae brownish, with scape, pedicel and base of 1st flagellar yellow. Pronotum with 3 setae. Mesoscutum black brown, with anterior margin yellow. Mesanepisternum 1.3 times as long as wide. Mesepimeron with 1 seta. Wing clear yellow, with central spot. C slightly extending beyond R₅. Cross vein r-m 1.0-1.7 times as long as stalk of median fork. Long basal cross vein tb bearing 2 setulae below. Legs brownish yellow, but base of middle coxa, basal 1/3 and apical 1/3 of hind coxa, apical part of middle femur, apical 2/5 of hind femur, apical parts of middle and hind tibiae blackish brown. Fore tibia with 1p-d. Middle tibia with 5d, 4a, 3v. Hind tibia with 6d, 6a, 1p. Abdominal tergites blackish brown. Sternites brown. The male genitalia are shown in Figs. 66-67.

Female. Wing length 2.6-2.9 mm. Coloration and characters as in male. The female terminalia is shown in Fig. 68.

Holotype ♂, Longwangshan, Zhejiang, 18-10-1995, WU Hong. Allotype ♀, the same locality as holotype, 20-07-1995, WU Hong; paratypes 1♂, the same locality as holotype, 14-07-1995, WU Hong; 1♂, 2♀♀, the same locality as holotype, 18-07-1995, WU Hong; 1♂, the same locality as holotype, 20-07-1995, WU Hong; 4♂♂, 1♀, the same locality as holotype, 17-10-1995, WU Hong; 1♂, Gutianshan, Zhejiang, 21-07-1992, WU Hong; 2♀♀, Gutianshan Zhejiang, 28-10-1992, DENG Yi-Fei; 1♀, Gutianshan, Zhejiang, 28-10-1992, WU Hong; 2♂♂, Gutianshan, Zhejiang, 29-10-1992, WU Hong; 2♂♂, Xiaolongmen, Mentuoguo, Beijing, 02-08-1992, YANG Chi-Kun.

This species is allied to *M. nigroflava* (Senior-White, 1922), but can be separated from the latter by mesoscutum black brown, with anterior margin narrow yellow; ventral stylomere of gonostylus distinct subtriangular.

30 *Epicypa formosa* Wu et Yang, sp. nov. (Figs. 69-70)

Male. Wing length 2.7-2.9 mm. Head brownish yellow. Antennae yellowish brown. Prono-

tum with 3-5 setae. Mesoscutum yellow, with 3 black brown broad longitudinal stripes. Mesanepisternum 1.3 times as long as wide. Mesepimeron with 2-3 setae. Wing clear yellow; cross vein r-m 1.5-2.0 times as long as stalk of median fork. Long basal cross vein tb bearing 5 setulae below. Legs yellow. Fore tibia with 2p-d. Middle tibia with 5d, 3-5a, 4v, 1p. Hind tibia with 6d, 5a, 4p. Abdominal tergites brown, with lateral margins brownish. Sternites brownish. The male genitalia are shown in Figs. 69-70.

Holotype ♂, Longwangshan, Zhejiang, 18-07-1995, WU Hong. Paratypes 1 ♂, the same as holotype; 1 ♂, the same locality as holotype, 13-07-1995, WU Hong.

This species is closed to *M. torquata* Matile, 1977, but differs by mesoscutum yellow, with 3 black brown longitudinal stripes; middle tibia with 4v; median process of gonocoxites slender, lateral sub-process with long setae.

31 *Epicyptha pusilla* Wu, sp. nov. (Figs. 71-73)

Male. Wing length 2.0-2.6 mm. Head yellow. Antennae brownish, with scape, pedicel and base of 1st flagellar yellow. Pronotum and mesepimeron with 2-3 setae. Mesoscutum yellow, with 3 dark brown broad longitudinal stripes. Mesanepisternum 1.3-1.7 times as long as wide. Wing clear yellow. C slightly extending beyond R₅. Cross vein r-m 1.2 times as long as stalk of median fork. Long basal cross vein tb bearing 1.2 setulae below. Legs yellow. Fore tibia with 1p-d. Middle tibia with 5d, 3a, 3v, 1p. Hind tibia with 6d, 5a, 3p. Abdominal tergites dark brown. Sternites brown. The male genitalia are shown in Figs. 71-72.

Female. Wing length 2.4-2.6 mm. Coloration and characters as in male. The female terminalia is shown in Fig. 73.

Holotype ♂, Longwangshan, Zhejiang, 18-07-1995, WU Hong. Allotype ♀, the same locality as holotype, 14-07-1995, WU Hong; paratypes 19 ♂♂, the same as holotype; 18 ♂♂, 4 ♀♀, the same as allotype; 3 ♂♂, 1 ♀, the same locality as holotype, 13-07-1995, WU Hong; 2 ♂♂, the same locality as holotype, 16-07-1995, WU Hong; 3 ♂♂, 1 ♀, the same locality as holotype, 20-07-1995, WU Hong; 1 ♂, the same locality as holotype, 14-05-1996, WU Hong; 1 ♂, Gutianshan, Zhejiang, 17-07-1992, MA Yun; 1 ♂, Baishanzu, Zhejiang, 03-10-1993, WU Hong; 2 ♂♂, Baishanzu, Zhejiang, 29-10-1993, WU Hong; 1 ♀, Guadun, Wuyishan, Fujian Province, 07-10-1991, WU Hong.

This species is similar to *M. subnuda* Wu (M. S.), but differs from the latter by wing without central spot, lateral processes with setae apically, posterior margin of ventral stylomere of gonostylus with one finger process.

32 *Epicyptha truncata* Wu, sp. nov. (Figs. 74-76)

Male. Wing length 3.2-3.4 mm. Head brown. Antennae brownish. Pronotum with 4 setae. Mesoscutum blackish brown, with anterior margin and humeral angles yellow. Mesanepisternum 1.1 times as long as wide. Mesepimeron with 3 setae. Wing clear yellow, with central spot. Cross vein r-m 1.5-2.0 times as long as stalk of median fork. Long basal cross vein tb bearing 2-3 setulae below. Legs yellow. Fore tibia with 2p-d. Middle tibia with 5d, 3a, 3-4v, 1p. Hind

tibia with 6d, 5a, 5-8 shown in Figs. 74-75.

Female. Wing length is shown in Fig.

Holotype ♂, Longwangshan, Wuyishan, Fujian Province, 07-10-1991, WU Hong; 1 ♂, Gutianshan, Zhejiang, 17-07-1992, WU Hong;

This species is similar to *M. subnuda* Wu (M. S.), but differs by a central spot, middle part of lateral sub-process and small.

33 *Epicyptha xiphotheca* Wu, sp. nov. (Figs. 77-79)

Male. Wing length 2.3-2.6 mm. Head yellow. Antennae brownish, with scape, pedicel and base of 1st flagellar yellow. Pronotum and mesepimeron with 2-3 setae. Mesoscutum yellow, with 3 dark brown broad longitudinal stripes. Mesanepisternum 1.2-1.7 times as long as wide. Wing clear yellow. C slightly extending beyond R₅. Cross vein r-m 1.2-2.0 times as long as stalk of median fork. Long basal cross vein tb bearing 1.2 setulae below. Legs yellow. Fore tibia with 1p-d. Middle tibia with 5d, 3a, 3v, 1p. Hind tibia with 6d, 5a, 3p. Abdominal tergites dark brown. Sternites brown. The male genitalia are shown in Figs. 77-78.

Female. Wing length is shown in Fig. 79.

Holotype ♂, Longwangshan, Wuyishan, Fujian Province, 07-10-1991, WU Hong; 1 ♂, Gutianshan, Zhejiang, 17-07-1992, MA Yun; 1 ♂, Baishanzu, Zhejiang, 03-10-1993, WU Hong; 2 ♂♂, Baishanzu, Zhejiang, 29-10-1993, WU Hong; 1 ♀, Guadun, Wuyishan, Fujian Province, 07-10-1991, WU Hong.

This species is similar to *M. subnuda* Wu (M. S.), but differs from the latter by mesoscutum brownish yellow, with a central spot, laterally, lateral sub-process

tibia with 6d, 5a, 5-8p. Abdominal tergites dark brown. Sternites brown. The male genitalia are shown in Figs. 74-75.

Female. Wing length 3.5-3.8 mm. Coloration and characters as in male. The female terminalia is shown in Fig. 76.

Holotype ♂, Longwangshan, Zhejiang, 13-07-1995, WU Hong. Allotype ♀, Guadun, Wuyishan, Fujian Province, 07-10-1991, WU Hong; paratypes 4♂♂, 2♀♀, the same as allotype; 1♂, Gutianshan, Zhejiang, 21-07-1992, WU Hong; 1♂, Gutianshan, Zhejiang, 25-07-1992, WU Hong; 1♂, Gutianshan, Zhejiang, 28-10-1992, DENG Yi-Fei.

This species is allied to *M. spatiosa* Wu (M. S.), but can be separated by wing with central spot, middle part of lateral processes with one inner branch, median process of gonocoxites short and small.

33 *Epicypa xiphothorna* Wu, sp. nov. (Figs. 77-79)

Male. Wing length 2.7-3.1 mm. Head brownish yellow. Antennae yellow. Pronotum with 2-3 setae. Mesoscutum brownish yellow, with 3 dark brown broad longitudinal stripes. Mesanepisternum 1.2-1.4 times as long as wide. Mesepimeron with 2 setae. Wing clear yellow; cross vein r-m 1.2-2.0 times as long as stalk of median fork. Long basal cross vein tb bearing 1-2 setulae below. Legs yellow, but posterior side of hind coxa with black brown marking apically, apical part of hind femur brown. Fore tibia with 1-2p-d. Middle tibia with 5d, 2-3a, 2-5v, 1p. Hind tibia with 6-7d, 6a, 3-5p. Abdominal tergites brown, lateral and anterior margins slightly lighter. Sternites brownish. The male genitalia are shown in Figs. 77-78.

Female. Wing length 2.9mm. Coloration and characters as in male. The female terminalia is shown in Fig. 79.

Holotype ♂, Longwangshan, Zhejiang, 18-07-1995, WU Hong. Allotype ♀, the same locality as holotype, 14-07-1995, WU Hong; paratypes 1♂, the same as holotype; 1♂, Gutianshan, Zhejiang, 29-10-1992, DENG Yi-Fei; 1♂, Baishanzu, Zhejiang, 25-10-1993, WU Hong.

This species is similar to *M. limnophila* Chandler, 1981, but differs from the latter by mesoscutum brownish yellow, with 3 dark brown longitudinal stripes; lateral processes broad apically, lateral sub-processes slender.