

507

7814

~~7634~~  
22/6

# THE ZOOLOGY OF ICELAND

Published at the expense of  
the Carlsberg-Fond, Rask-Ørsted-Fond, Sættmálasjóður, and Ríkissjóður Íslands

Editorial committee:

A. Friðriksson, F. Guðmundsson, P. Hannesson, Ad. S. Jensen, R. Spärck,  
Reykjavík                      Reykjavík                      Reykjavík                      Copenhagen                      Copenhagen

B. Sæmundsson, S. L. Tuxen, and A. Vedel Tåning  
Reykjavík                      Copenhagen                      Copenhagen

Managing editors:

A. Friðriksson and S. L. Tuxen  
Reykjavík                      Copenhagen

Volume III, Part 48 a

Peder Nielsen, Oscar Ringdahl, and S. L. Tuxen: Diptera I  
(exclusive of Ceratopogonidae and Chironomidae)

---

Ejnar Munksgaard

Copenhagen and Reykjavík 1954

Price Kr. 18.—  
For subscribers Kr. 12.—

UNIVERSITETET I BERGEN  
Zoologisk Museum

29. *Spathobdella detrita* Frey.

*Spathobdella detrita* Frey 1953 p. 460 fig. 2.

## Iceland record:

*Spathobdella detrita* Frey 1953 p. 461.

Occurrence in Iceland: *W.*: Reykjavík (Frey).

Distribution: Not known outside Iceland.

*Neosciara ecalcarata* Holmgr. and *nitidicollis* Meig. are mentioned in Lindroth 1931 p. 290 from Barkarstaðir in Fljótshlíð (S.) (both species) and Skútustaðir near Mývatn (N.) (*ecalcarata*). The three specimens are now indeterminable and it is uncertain what is meant by the species-names.

*Cratyna* sp. is mentioned by Lindroth 1931 p. 291 from Akureyri (N.). The genus comprises only monstrous specimens of other genera and should be cancelled (Frey 1947 p. 76). The specimen from Iceland is indeterminable.

A great many larvae of Sciariids were found, in 17 localities all over the country except the *E.*, but as they cannot be determined as to species, they will not be registered here. They were mostly found in the soil of meadow, home-field, heath, and fell-field, even in several places in the central highland, but besides in a few cases in dung.

8. Fam. Mycetophilidae<sup>1</sup>).30. *Macrocera nigropicea* Lundström.

*Macrocera nigropicea* Lundström 1906 p. 3; Landrock 1927 (Lindner 8) p. 20.

## Iceland record:

*Macrocera nigropicea* Lindroth 1931 p. 287.

Occurrence in Iceland: *S.*: Fagurhólsmýri (Lth.), July 4th, in bog.

Distribution: Lapland.

*Macrocera ?parva* Lundström was recorded by Lindroth (1931 p. 288) on the basis of a specimen in Náttúrugripasafnið, Reykjavík, from Langárfoss (*W.*), determined many years ago by Edwards with a mark of interrogation. Till fresh material has been found, it should not be regarded as belonging to the Icelandic fauna.

31. *Macrocera vittata* Meigen.

*Macrocera vittata* Landrock 1927 (Lindner 8) p. 23, taf. III fig. 23.

## Iceland record:

*Macrocera vittata* Lindroth 1931 p. 287.

<sup>1</sup>) Lindroth's material of Mycetophilids was revised by Peder Nielsen, Silkeborg.

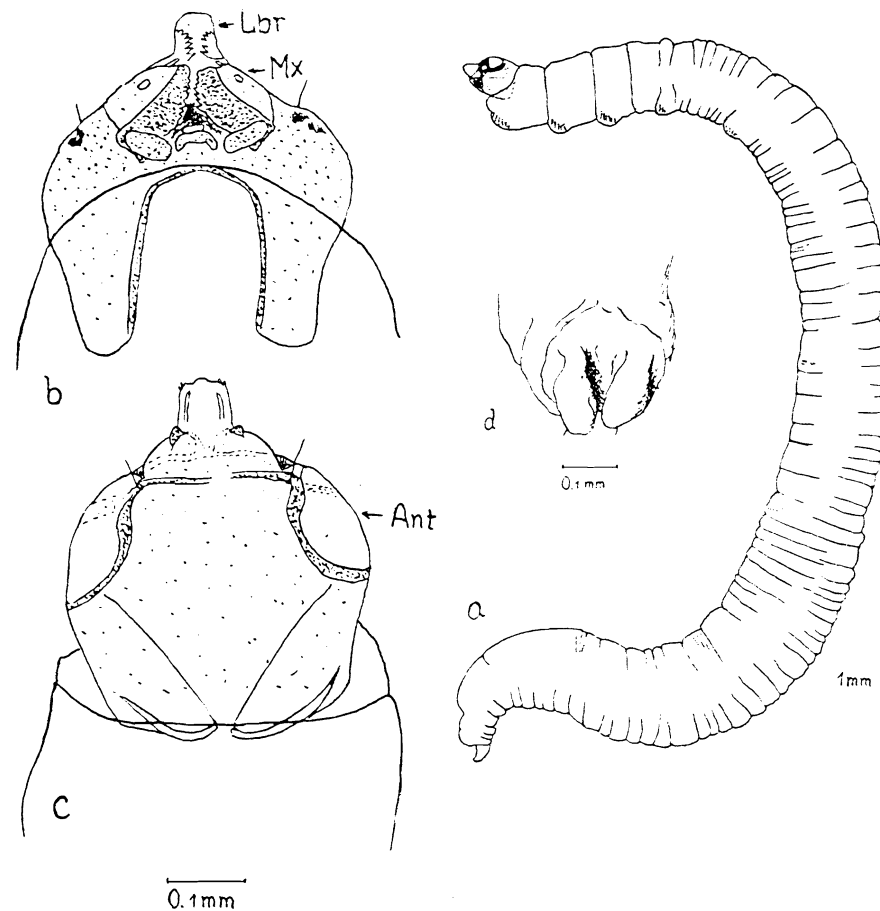


Fig. 5. *Macrocera ?vittata* Mg., larva. a. Lateral view; note the small pseudopods indicating the original segmentation. b. Head capsule, ventral view. c. The same, dorsal view. d. Hind end in dorsal view.

Occurrence in Iceland: *N.W.*: Dýrafjörður.—*N.*: Reykjaskóli, Hrutafjörður (G.G.); Mælifellsdalur; Gil, Öxnadalur (G.G.); Grímsey (P.F.H.); Reykjahlíð near Mývatn.—*S.*: Kvísker (H.B.); Gröf (Lth.); Þórsmörk (Lth.); Fljótshlíð (Lth.).—*Centr.*: Víðidalur north of Vatnajökull (G.G.).

Found all over Iceland, but rare.

Distribution: Europe to South Sweden: the British Isles.

Biology: In most biotopes from meadow to fell-field. June 9th to August.

A larva, undoubtedly a *Macrocera* larva (see the figures of *M. anglica*

Edw. in Madwar 1935), was found under stones, Reykjavík (*W.*), June 25th. Very probably it belongs to the present species.

Description of the larva (fig. 5): Differs from *M. anglica* Edw. (Madwar in Psyche 42 1935 p. 25 ff) in the shape of the labrum. The original segmentation of the abdomen is more distinct than in the drawing by Madwar, i.e. it can be seen in the poor rudiments of the pseudopods.

### 32. *Mycomyia brunnea* Dziedzicki.

*Mycomyia brunnea* Landrock 1927 (Lindner 8) p. 43, taf. IV fig. 14.

Occurrence in Iceland: *N.W.*: Drangajökull, July 26th, 1 ♂ (Brit. Mus.).

Distribution: Denmark, Pommerania, Poland.

### 33. *Leia bimaculata* Meigen.

*Leia bimaculata* Landrock 1927 (Lindner 8) p. 84, taf. VI fig. 39. *Larva*: Madwar 1937 p. 64–66, figs. 210–19.

Iceland records:

*Leia bimaculata* Lindroth 1931 p. 288.

*Rhymosia fasciata* Tuxen 1944 p. 150.

Occurrence in Iceland: *N.*: Reykjaskóli, Hrutafjörður (G.G.); Skiðastaðalaug, Mælifell, Starrastaðir and Tungusveit, in Skagafjarðarsýsla.—*S.*: Hof and Svínafell in Örafi (Lth.); Fagurhólmsmýri (H.B.); Pjetursey (Lth.); Bíldsfell, Grafningur (G.G.).—*W.*: Laugarnar, Reykjavík; Akranes (G.G.); Reykholt.

Found mostly in South and West Iceland, many finds near hot springs.

Distribution: Europe to South Sweden; the British Isles.

Biology: Not synanthropic, as supposed by Lindroth, but found in meadows and bogs, near rivers, and very often near hot springs. July 2nd to August.

Mature larvae were found under stones near the river Borgará, Skagafjarðarsýsla (*N.*), June 18th.

### 34. *Exechia frigida* Holmgren.

*Exechia frigida* Barendraht 1938 p. 41, 44, figs. 7, 8 left.

Iceland records:

*Exechia spinigera* pro parte Lindroth 1931 p. 288.

*Exechia frigida* Falk 1940 p. 38.

Occurrence in Iceland: *N.W.*: Brjánslækur (G.G.); Tálkna-fjörður; Laugaból; Arngerðareyri.—*N.*: Goðdalir in Skagafjarðarsýsla;

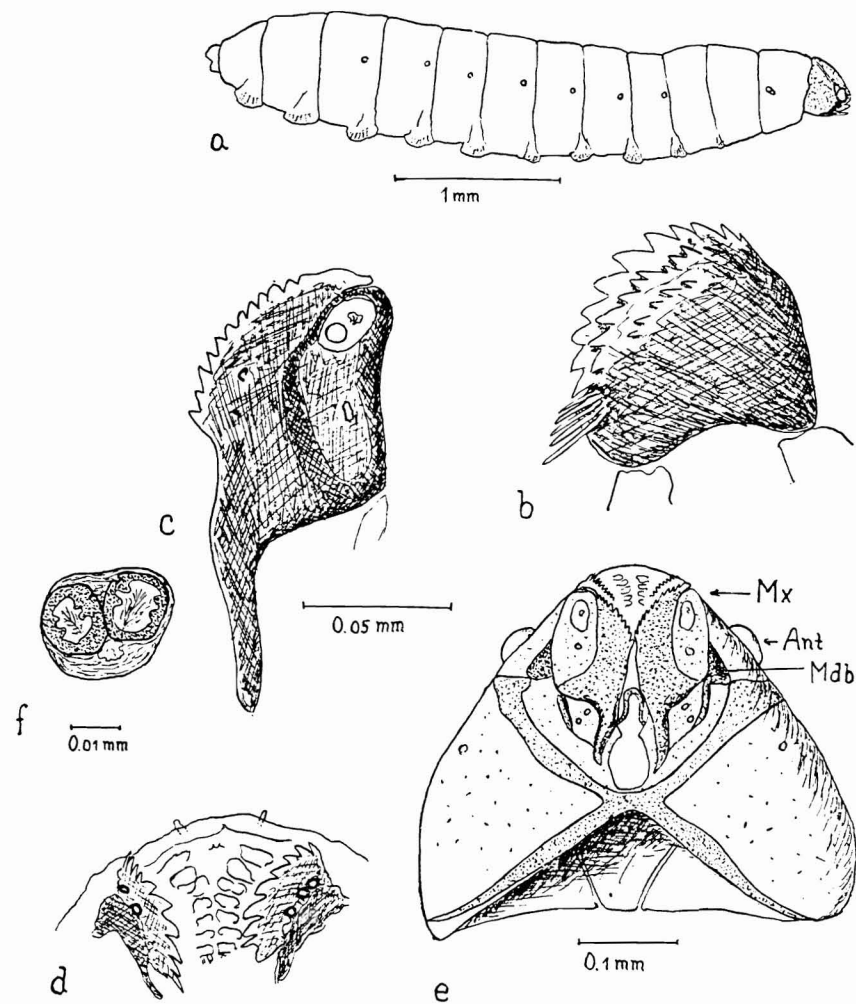


Fig. 6. *Exechia ?frigida* Holmgr., larva. a. Lateral view. b. Mandible. c. Maxilla. d. Under side of Labrum. e. Head capsule, ventral view. f. Anterior spiracle.

Akureyri: Skútustaðir near Mývatn (Lth.).—*E.*: Egilsstaðir (also Lth.); Hallormsstaður (G.G.); Djúpvogur (G.G.).—*S.*: Skaftafell (G.G.); Skarðsmýri (Lth.); Þórsmörk (Lth.).—*Centr.*: Fróðárdalur near Hvítárvatn; Snæfell north of Vatnajökull (Falk).

Occurring all over Iceland.

Distribution: The Netherlands; the British Isles. Jan Mayen, East and West Greenland (to 70° 40' and 64° 45' N. lat., resp.).

**Biology:** In meadows, home-fields, and heaths. June 15th to Aug. 18th.

Larvae presumably belonging to this species were found at Brjánslækur (N.W.), July (G.G.); Innstaland, Skagafjörður (N.), under stones on heath, July 4th; Skaftafell (S.), Aug. (G.G.); and Mulaver southeast of Hofs Jökull (Centr.), Aug. 21st. They belong to the genus *Exechia*, according to Madwar's figures (1937 p. 71 ff), though not to *Ex. fusca*, as the anterior spiracles are biforous. As imagines of *Ex. frigida* were found in two cases in the same place and on the same date as the larvae, we have no doubt in referring the larva to this species. The larvae seemed to be mature.

**Description of the larva** (fig. 6): Mandibles with 11 teeth in the outer row, 9 teeth in the next one, and 5 teeth in a second inner row. Protheca with 5—6 long hairs. Maxilla with 11 teeth.

### 35. *Exechia fusca* Meigen.

*Exechia fusca* Landrock 1927 (Lindner 8) p. 100, taf. VII figs. 38, 39. *Larva*: Madwar 1937 p. 71—74, figs. 241—49.

**Occurrence in Iceland:** N.W.: Arngerðareyri (also Brit. Mus.); Skjaldfannarfjall (Brit. Mus.); Drangajökull (Brit. Mus.).—E.: Hallormsstaður (G.G.).—W.: Skorradalsvatn (Brit. Mus.).—Centr.: Fróðárdalur near Hvítárvatn.

In the colder parts of Iceland.

**Distribution:** Europe to northernmost Scandinavia; the British Isles. Greenland?

**Biology:** On *Betula nana*. July 26th to Sept. 2nd.

### 36. *Exechia nigra* Edwards.

*Exechia nigra* Edwards 1925 p. 595, pl. LII figs. 63, 63a.

**Iceland record:**

*Exechia spinigera* pro parte Lindroth 1931 p. 288.

**Occurrence in Iceland:** N.W.: Reykjanes and Laugaból near Ísafjarðardjúp.—N.: Akureyri (Lth.).—E.: Seyðisfjörður: Egilsstaðir.—S.: Hnausar, Meðalland (Lth.).—Centr.: Hvítárnes and Langjökull near Hvítárvatn.

Principally in the colder parts of Iceland.

**Distribution:** The British Isles.

**Biology:** In houses and on home-fields, heaths, and fell-fields, even 100 m from a glacier. July 18th to Sept. 3rd.

### 37. *Exechia nitidicollis* Lundström.

*Exechia nitidicollis* Lundström 1913 p. 311—12, taf. XI figs. 11, 12.

**Occurrence in Iceland:** E.: Egilsstaðir.—S.: Ölfus (G.G.).

**Distribution:** France. East Greenland (c. 70° 40' N. lat.).

**Biology:** Nothing known as to biotope. Aug.

### 38. *Exechia spinuligera* Lundström.

*Exechia spinigera* Lundström 1909 p. 45, taf. VIII figs. 85—86, taf. X figs. 111, 112;  
*E. spinuligera* Lundström 1912 p. 33.

**Iceland record:**

*Exechia spinigera* pro parte Lindroth 1931 p. 288.

**Occurrence in Iceland:** N.W.: Hagi, Barðaströnd.—N.: Mælifell; Mývatn.—S.: Breiðabólstaður, Síða (Lth.).

Principally in the colder parts of Iceland.

**Distribution:** Finland and North Sweden, the Netherlands; the British Isles.

**Biology:** In bog and heath. June 24th to Aug. 18th.

### 39. *Rhymosia fasciata* Meigen.

*Rhymosia fasciata* Landrock 1927 (Lindner 8) p. 112, taf. VIII fig. 48.

**Iceland records:**

*Rhymosia fasciata* Lindroth 1931 p. 288.

non *Rhymosia fasciata* Tuxen 1944 p. 150 (erroneously for *Leia bimaculata*).

**Occurrence in Iceland:** N.: Mælifell; Akureyri (Lth.).

**Distribution:** Europe to northernmost Scandinavia; the British Isles.

**Biology:** In a bog, June 24th (Mælifell), and a house Aug. 9th—13th (Akureyri).

### 40. *Allodia ?sericoma* Meigen.

*Allodia sericoma* Landrock 1927 (Lindner 8) p. 126, taf. IX fig. 51.

**Iceland record:**

*Allodia sericoma?* Lindroth 1931 p. 288.

**Occurrence in Iceland:** S.: Hólar, Hornafjörður (Lth.); Skarðsmýri, Meðalland (Lth.).

**Distribution:** Europe; the British Isles.

**Biology:** In a bog and near a brooklet. July 20th to Aug. 22nd.

41. *Phronia exigua* Zetterstedt.

*Phronia exigua* Landrock 1927 (Lindner 8) p. 144, taf. XI figs. 29, 30.

Occurrence in Iceland: *N.W.*: Tungufjall near Ísafjörður town.—*N.*: Blikalón, Melrakkasljetta.

Distribution: Europe to South Sweden; the British Isles. West Greenland (to 70° 40' N. lat.).

Biology: In heaths. Aug. 10th and 27th.

9. Fam. Psychodidae<sup>1</sup>).42. *Psychoda albipennis* Zetterstedt.

*Psychoda* (*Psychoda*) *albipennis* Tonnoir 1922 p. 81, fig. 12. *Larva*: Satchell 1947 p. 59—60, figs. 41—46.

Occurrence in Iceland: *E.*: Hallormsstaður (also G.G.).—*W.*: Reykjavík (G.G.).

Distribution: Central and Northern Europe to northernmost Sweden (*Berdén in lit.*); the British Isles.

Biology: In houses. June to Aug.

43. *Psychoda severini* Tonnoir.

*Psychoda* (*Psychoda*) *severini* Tonnoir 1922 p. 78, fig. 11. *Larva*: Satchell 1947 p. 54—56, figs. 7—12.

## Iceland records:

*Psychoda phalaenoides* Lindroth 1931 p. 272.

*Psychoda phalaenoides* Fiðrildamý Gígja 1944 p. 138.

Icelandic name: Fiðrildamý.

Occurrence in Iceland: *N.*: Akureyri (Lth.).—*E.*: Þórshöfn (Lth.); Hallormsstaður.—*S.*: Hof, Örafi (Lth.); Breiðabólstaður (Lth.); Hnausar, Meðalland (Lth.); Vík (Lth.); Pjetursey and Seljaland south and west of Eyjafjallajökull (Lth.); Fellsmúli; Þrastaskógur; Vestmannaeyjar.—*W.*: Þóroddsstaðir near Reykjavík; Reykjavík (G.G.), also a larva.

Synanthropic all over Iceland, though commonest in the South and West.

Distribution: Europe to central Sweden (*Berdén in lit.*); the British Isles (subsp. *parthenogenetica* Tonn.); North America. Also all the Icelandic specimens are females.

<sup>1</sup> The Psychodids, both the new material and Lindroth's material, were revised by Dr. Paul Freeman, London.

Biology: Synanthropic in or near houses, also found in flowers. May 6th to Sept. 3rd.

A larva was found in Reykjavík, Nov. (G.G.).

44. *Threticus cinerea* Banks.

*Psychoda* (*Threticus*) *compar* Tonnoir 1922 p. 67, fig. 5. *Larva*: *Psychoda cinerea* Satchell 1947 p. 56, figs. 13—19.

Occurrence in Iceland: *W.*: Reykjavík, Febr. 28th (G.G.).

Distribution: Belgium, France, Sweden to Dalarna (*Berdén in lit.*); the British Isles; North America.

10. Fam. Simuliidae<sup>1</sup>).45. *Simulium vittatum* Zetterstedt.

*Simulium vittatum* Dyar & Shannon 1927 p. 28, figs. 74—75. *Larva*: Emery 1913 pl. 39, 41.

## Iceland records:

Vatzmý Jón Guðmundsson 1640 (1924) p. 21.

Myg Horrebow 1752 p. 241.

My Olafsen & Povelsen 1772 p. 712—13.

*Culex pipiens*, My, Myvargr Mohr 1786 p. 98—101.

?*Culex reptans* Mohr 1786 p. 102.

*Simulia reptans* Walker 1889 p. 301.

?*Culex pipiens* Walker 1889 p. 301.

*Simulia reptans* Walker 1890c p. 238.

?*Culex pipiens* Walker 1890c p. 237.

*Simulium* sp.? Mason 1890 p. 199.

*Simulia reptans*? Lundbeck 1913 p. 20.

*Simulium vittatum* Sambon 1925 p. 44.

*Simulium vittatum* Lindroth 1931 p. 272.

*Simulium vittatum* Anderson & Falk 1935 p. 410, 412, 413, 419.

*Simulium vittatum* Falk 1940 p. 38.

*Simulium vittatum* Fristrup 1943 p. 156.

*Simulium vittatum* Bitný, Mývargur Gígja 1944 p. 138—40.

Icelandic name: Bitný, mývargur, bitvargur.

Occurrence in Iceland (map fig. 8): *N.W.*: Brjánslækur (G.G.); Tálknafjörður (Lth.); Laugaból; Unaðsdalur (Brit. Mus.); Skjaldfannarfjall (Brit. Mus.); Kaldalón (Frstr.).—*N.*: Hjeraðsvötn, Gljúfurá, Mælifellsá, Kiðaskarö, Merkigarður, Mælifell and Goðdalir in Skagafjarðarsýsla; Siglufjörður; Akureyri; Háls, also larvae and pupae; Ingjaldsstaðir; Laxá and many places near Mývatn (also many earlier authors and G.G.), also larvae and pupae; Laugaskóli near Húsavík (also G.G.),

<sup>1</sup> The new material of Simuliids was revised by Dr. John Smart, Cambridge.

lowboreal or Atlantic, 16.2 % have a northern stamp, even true arctic species (1.9 %). Within Iceland the distribution of the Diptera only to some extent reflects these distributional types, especially because so high a percentage—four-fifths at least—of the species are found along the south coast, even some of the true arctic species. Thus the Icelandic Dipterous fauna would seem to support the theory of an Ice Age refuge in this part of the country. When, whence, and how this fauna came to Iceland, will not be discussed here, it should merely be emphasised that *Simulium vittatum* and *Metasyrphus curtus* are the only species which Iceland has in common with America but not with Europe, whereas it has well over a hundred species in common with Europe but not with America. Nine species are called endemic, but one is doubtful, seven are described in 1953—54, and the hot-spring fly *Scatella thermarum*, which is also found near hot springs at Unartok in Greenland, is probably a recent species.

The Icelandic Dipterous fauna is European and essentially lowboreal to boreal, though with a highboreal and even a small truly arctic element.

#### 4. Melanism.

It is a very characteristic feature of the Dipterous fauna of Iceland that the species are darker here than elsewhere; often these darker forms have been given a name. This melanism is especially evident within the families *Mycetophilidae*, *Syrphidae*, *Agromyzidae*, and *Muscidae*. We will not try to explain this fact, but only list the particularly melanic species, which are as follows:

Most of the *Mycetophilidae*

*Pyrophaena granditarsa* (var. *lindrothi*)

*Platychirus peltatus* (var. *islandicus*)

*Melanostoma mellinum*

*Epistrophe tarsata*.

*Syrphus ribesii*

— *torvus*

*Sphaerophoria scripta* (var. *strigata*)

*Phytomyza ranunculi* (var. *islandica*)

*Limnophora orbitalis* (var. *lindrothi*)

*Lispa consanguinea* (var. *fuscipes*)

*Pegomyia bicolor* (var. *cinereorufa*).

It is of special interest that *Lispa consanguinea*, which is only found near hot springs and the larva of which probably lives in the water of the springs, occurs in a dark—and robust—form, just as the other specially hot-spring fly, *Scatella thermarum*, is a dark and robust form compared with its nearest relative, *Scatella stagnalis*.

Synopsis of the distribution of the Icelandic species of Diptera excl. of Ceratopogonidae and Chironomidae	Distr. type	N.W. Iceland	N. Iceland	E. Iceland	S. Iceland	W. Iceland	Centr. Iceland	North America	W. Greenland	E. Greenland	Spitzbergen	The Faroes	N. Scandinavia	S. Scandinavia
<b>ANISOPODIDAE</b>														
1. <i>Anisopus fenestralis</i> .....	lowb	—	—	—	—	×	—	×	—	—	—	—	—	×
<b>TRICHO CERIDAE</b>														
2. <i>Trichocera maculipennis</i> .....	lowb	×	×	×	×	×	—	×	×	—	—	—	—	×
<b>THAUMALEIDAE</b>														
3. <i>Thaumalea verralli</i> .....	lowb	×	—	×	×	×	—	—	—	—	—	—	—	—
<b>BIBIONIDAE</b>														
4. <i>Dilophus femoratus</i> .....	bor	×	×	×	×	×	—	—	—	—	—	×	×	×
5. <i>Biblio nigriventris</i> .....	lowb	—	—	×	×	×	—	—	—	—	—	×	—	×
6. — <i>pomona</i> e .....	bor	×	×	×	—	×	×	—	—	—	—	—	×	×
<b>SCATOPSIDAE</b>														
7. <i>Scatopse notata</i> .....	cosm	×	×	×	×	×	—	×	×	—	—	×	×	×
<b>CECIDOMYIDAE 8—12</b>														
<b>SCIARIDAE</b>														
13. <i>Bradysia brunnipes</i> .....	bor	×	×	×	×	×	—	—	—	—	—	—	×	×
14. — <i>confinis</i> .....	lowb	—	—	×	×	×	—	—	—	—	—	—	—	×
15. — <i>nigripes</i> .....	h-a	—	—	—	—	×	—	—	—	—	—	—	×	—
16. — <i>ofenkaulis</i> .....	bor	—	×	—	×	—	×	—	—	—	—	—	×	×
17. — <i>auripila</i> .....	lowb	—	×	—	×	×	—	—	—	—	—	—	×	×
18. — <i>angustipennis</i> .....	h-a	—	×	—	—	×	—	—	—	—	—	—	×	—
19. — <i>rufescens</i> .....	atl	×	×	×	×	×	×	—	—	—	—	—	—	a
20. — <i>fungicola</i> .....	lowb	—	×	—	—	—	—	—	—	—	—	—	—	×
21. — <i>tristicula</i> .....	lowb	—	—	—	×	×	—	—	—	—	—	—	—	×
22. — <i>venosa</i> .....	bor	—	—	—	×	—	—	—	×	—	—	—	×	×
23. — <i>conspicua</i> .....	lowb	—	—	—	×	×	—	—	—	—	—	—	—	×
24. — <i>modesta</i> .....	bor	—	—	—	×	—	—	—	?	—	—	—	×	×
25. — <i>degenerans</i> .....	bor	—	×	—	—	—	—	—	—	—	—	—	×	×
26. — <i>foreipata</i> .....	lowb	—	×	—	—	—	—	—	—	—	—	—	—	—
27. <i>Scaptosciara vivida</i> .....	bor	—	×	—	×	×	—	—	×	—	—	—	×	×
28. <i>Spathobdella cunetans</i> .....	bor	×	—	—	×	—	×	—	—	—	—	—	×	×
29. — <i>detrita</i> .....	end	—	—	—	—	×	—	—	—	—	—	—	—	—
<b>MYCETOPHILIDAE</b>														
30. <i>Macrocera nigropicea</i> .....	high	—	—	—	×	—	—	—	—	—	—	—	×	—
31. — <i>vittata</i> .....	lowb	×	×	—	×	×	×	—	—	—	—	—	—	×
32. <i>Mycomyia brunnea</i> .....	lowb	×	—	—	—	—	—	—	—	—	—	—	—	—
33. <i>Leia bimaculata</i> .....	lowb	—	×	—	×	×	—	—	—	—	—	—	—	×
34. <i>Exechia frigida</i> .....	bor	×	×	×	×	—	×	—	×	×	—	—	—	—
35. — <i>fusca</i> .....	bor	×	—	×	—	×	×	—	—	—	—	—	×	×

Synopsis of the distribution of the Icelandic species of Diptera excl. of Ceratopogonidae and Chironomidae	Distr. type	Distribution														
		N.W. Iceland	N. Iceland	E. Iceland	S. Iceland	W. Iceland	Centr. Iceland	North America	W. Greenland	E. Greenland	Spitzbergen	The Faroes	N. Scandinavia	S. Scandinavia	British Isles	
36. <i>Exechia nigra</i> .....	lowb	×	×	×	×	—	×	—	—	—	—	—	—	—	×	
37. — <i>nitidicollis</i> .....	bor	—	—	×	×	—	—	—	—	×	—	—	—	—	—	
38. — <i>spinuligera</i> .....	bor	×	×	—	×	—	—	—	—	—	—	×	—	×	—	
39. <i>Rhymosia fasciata</i> .....	bor	—	×	—	—	—	—	—	—	—	—	×	×	×	—	
40. <i>Allodia ?sericoma</i> .....	bor	—	—	—	×	—	—	—	—	—	—	—	—	×	—	
41. <i>Phronia exigua</i> .....	bor	×	×	—	—	—	—	×	—	—	—	—	×	×	—	
<b>PSYCHODIDAE</b>																
42. <i>Psychoda albipennis</i> .....	bor	—	—	×	—	×	—	—	—	—	—	×	×	×	—	
43. — <i>severini</i> .....	lowb	—	×	×	×	×	—	×	—	—	—	—	×	×	—	
44. <i>Threticus cinerea</i> .....	lowb	—	—	—	—	×	—	×	—	—	—	—	—	×	—	
<b>SIMULIIDAE</b>																
45. <i>Simulium vittatum</i> .....	ne	×	×	×	×	×	×	×	×	—	—	—	—	—	—	
46. <i>Eusimulium latipes</i> .....	bor	×	×	×	×	×	×	×	—	—	—	—	×	×	×	
47. — <i>aureum</i> .....	bor	×	×	×	×	×	×	—	—	—	—	—	×	×	×	
48. <i>Prosimulium hirtipes</i> .....	high	—	×	—	×	×	—	×	—	—	—	×	—	S	—	
<b>TIPULIDAE</b>																
49. <i>Prionocera turcica</i> .....	bor	×	×	×	×	×	×	—	—	—	—	×	×	×	—	
50. <i>Tipula marmorata</i> .....	bor	—	×	—	×	×	×	—	—	—	—	×	×	×	—	
51. — <i>rufina</i> .....	atl	×	×	×	×	×	×	—	—	—	×	—	r	×	—	
<b>LIMONIIDAE</b>																
52. <i>Limonia trivittata</i> .....	atl	—	—	—	—	×	—	—	—	—	—	—	a	×	×	
53. <i>Dicranomyia autumnalis</i> .....	atl	×	×	×	×	×	×	—	—	—	—	—	a	×	×	
54. — <i>didyma</i> .....	atl	×	×	×	×	×	×	—	—	—	—	—	a	×	×	
55. <i>Paradicranota ?subtilis</i> .....	lowb	×	×	—	—	—	—	—	—	—	—	—	—	×	×	
56. <i>Rhaphidolabis exclusa</i> .....	high	×	×	×	×	×	×	—	—	—	—	—	×	×	×	
57. <i>Limnophila meigeni</i> .....	lowb	×	×	×	×	×	×	—	—	—	—	—	×	×	×	
58. <i>Erioptera trivialis</i> .....	bor	×	×	×	×	×	×	—	—	—	—	—	×	×	×	
59. <i>Symplecta hybrida</i> .....	pal	×	×	—	×	×	—	×	×	—	—	—	×	×	×	
60. <i>Ormosia hederæ</i> .....	lowb	×	×	×	×	×	—	—	—	—	—	—	—	×	×	
61. <i>Rhypholophus fascipennis</i> .....	b-a	×	×	×	×	×	×	—	×	×	—	—	×	r	—	
<b>EMPIDIDAE</b>																
62. <i>Chersodromia arenaria</i> .....	atl	—	×	—	—	×	—	—	—	—	—	—	a	×	×	
63. <i>Platypalpus ecalceatus</i> .....	bor	×	×	×	×	×	—	—	—	—	—	—	×	×	×	
64. <i>Clinocera stagnalis</i> .....	pal	×	×	×	×	×	×	×	×	—	×	×	×	×	×	
65. <i>Empis lucida</i> .....	b-a	×	×	×	×	×	—	—	—	—	×	×	×	×	×	
66. <i>Rhamphomyia hirtula</i> .....	high	—	×	—	×	—	—	—	—	—	—	—	—	×	×	
67. — <i>simplex</i> .....	atl	×	×	—	×	×	—	—	—	—	—	—	a	×	×	

Synopsis of the distribution of the Icelandic species of Diptera excl. of Ceratopogonidae and Chironomidae	Distr. type	Distribution														
		N.W. Iceland	N. Iceland	E. Iceland	S. Iceland	W. Iceland	Centr. Iceland	North America	W. Greenland	E. Greenland	Spitzbergen	The Faroes	N. Scandinavia			
<b>DOLICHOPODIDAE</b>																
68. <i>Dolichopus plumipes</i> .....	bor	×	×	×	×	×	—	—	—	—	—	—	—	—	×	
69. <i>Syntormon pallipes</i> .....	atl	×	×	×	×	×	—	—	—	—	—	—	—	—	×	
70. <i>Campsicnemus armatus</i> .....	atl	×	×	×	×	×	—	—	—	—	—	—	—	—	×	
71. <i>Hydrophorus ?viridis</i> .....	atl	—	—	—	×	—	—	—	—	—	—	—	—	—	×	
<b>LONCHOPTERIDAE</b>																
72. <i>Lonchoptera furcata</i> .....	bor	—	×	—	×	×	—	—	—	—	—	—	—	×	×	
<b>SYRPHIDAE</b>																
73. <i>Neoascia floralis</i> .....	bor	—	—	—	×	—	—	—	—	—	—	—	—	—	×	
74. — <i>geniculata</i> .....	bor	—	×	—	×	—	—	—	—	—	—	—	—	—	×	
75. <i>Pyrophaena granditarsa</i> .....	bor	—	—	—	×	—	—	—	—	—	—	—	—	—	×	
76. <i>Platychirus albimanus</i> .....	bor	×	×	×	×	×	—	—	—	—	—	—	—	—	×	
77. — <i>clypeatus</i> .....	bor	×	×	×	×	×	—	—	—	—	—	—	—	—	×	
78. — <i>peltatus</i> .....	bor	×	×	×	×	×	—	—	—	—	—	—	—	—	×	
79. <i>Melanostoma mellinum</i> .....	bor	—	×	×	×	×	—	—	—	—	—	—	—	—	×	
80. <i>Epistrophe tarsata</i> .....	b-a	×	×	×	×	×	—	—	—	—	—	—	—	—	×	
81. <i>Syrphus lunulatus</i> .....	bor	—	×	×	×	×	—	—	—	—	—	—	—	—	×	
82. — <i>ribesii</i> .....	hol	—	×	×	×	×	—	—	—	—	—	—	—	—	×	
83. — <i>torvus</i> .....	bor	×	×	×	×	×	—	—	—	—	—	—	—	—	×	
84. — <i>tricinctus</i> .....	bor	—	—	×	×	×	—	—	—	—	—	—	—	—	×	
85. <i>Metasyrphus curtus</i> .....	arct	—	—	×	—	—	—	—	—	—	—	—	—	—	—	
86. — <i>lundbecki</i> .....	?	—	×	—	×	—	—	—	—	—	—	—	—	—	—	
87. — <i>nigroventris</i> .....	arct	—	×	—	×	—	—	—	—	—	—	—	—	—	—	
88. — <i>punctifer</i> .....	arct	×	×	—	×	×	—	—	—	—	—	—	—	—	×	
89. <i>Sphaerophoria scripta</i> .....	bor	×	×	×	×	×	—	—	—	—	—	—	—	—	×	
90. <i>Helophilus pendulus</i> .....	bor	×	×	×	×	×	—	—	—	—	—	—	—	—	×	
91. <i>Sericomyia lappona</i> .....	bor	×	×	×	×	×	—	—	—	—	—	—	—	—	×	
<b>PHORIDAE</b>																
92. <i>Megaselia carbonaria</i> .....	b-a	×	×	—	—	—	—	—	—	—	—	—	—	—	×	
93. — <i>clara</i> .....	b a	×	—	—	—	—	—	—	—	—	—	—	—	—	×	
94. — <i>pleuralis</i> .....	bor	—	×	×	×	×	—	—	—	—	—	—	—	—	×	
95. — <i>sordida</i> .....	b-a	—	×	—	—	—	—	—	—	—	—	—	—	—	×	
<b>SCIOMYZIDAE</b>																
96. <i>Sciomyza ventralis</i> .....	bor	—	×	—	×	—	—	—	—	—	—	—	—	—	×	
97. <i>Dichrochira nigrimana</i> .....	bor	—	×	—	×	—	—	—	—	—	—	—	—	—	×	
98. <i>Ditaeniella griseescens</i> .....	lowb	—	×	—	—	—	—	—	—	—	—	—	—	—	×	
99. <i>Tetanocera robusta</i> .....	high	—	×	—	—	—	—	—	—	—	—	—	—	—	×	
100. <i>Dietya umbrarum</i> .....	bor	×	—	—	×	—	—	—	—	—	—	—	—	—	×	

## LITERATURE

- Aldrich, J. M., 1905: A catalogue of North American Diptera. *Smiths. Misc. Coll.* 46.
- Alexander, C. P., 1921: The crane-flies of New York II. Biology and phylogeny. *Cornell Univ. Agr. Exp. Stat. Memoirs* 38 p. 691—1133.
- 1922: The crane-flies (Superfamily Tipuloidea, Order Diptera). *Rep. Sci. Res. Norw. Exp. to Novaya Zemlya*, No. 5.
- Anderson, F. W., & P. Falk, 1935: Observations on the ecology of the central desert of Iceland. *J. Ecol.* 23 p. 406—21.
- Backlund, Helge O., 1945: Larvae and pupae of *Heterochila buccata* Fall. *Kgl. fys. Sällsk. Lund Förhdl.* 15 6.
- Balachowsky, A., & L. Mesnil, 1935: Les insectes nuisibles aux plantes cultivées. Paris.
- Bangerter, H., 1930: Mücken-Metamorphosen III. *Konowia* 9 p. 97—102.
- Banta, Arthur M., 1907: The fauna of Mayfield's Cave. *Carnegie Inst. Wash. Publ.* 67.
- Barendrecht, G., 1938: The Dutch Fungivoridae in the collection of the Zoological Museum at Amsterdam. *Tijdschr. v. Ent.* 81 p. 35—54.
- Becker, Th., 1894: Dipterologische Studien I. Scatomyzidae. *Berl. Ent. Zeitschr.* 39 p. 77—196.
- Bhatia, Madan Lal, 1939: Biology, morphology and anatomy of aphidophagous Syrphid larvae. *Parasitology* 31 p. 78—129.
- Björnsson, Hálfdrán, 1951: Gróður og dýralíf í Esjufjöllum. *Náttúrufræðingurinn* 21 p. 109—12.
- Brown, E. S., 1944: On some insects collected in the Faroe Islands. *Ent. Mo. Mag.* 80 p. 256—58.
- Boving, Adam G., 1925: A summer trip in Iceland South of Vatna-Jökul. *Proc. Ent. Soc. Wash.* 27 p. 17—35.
- Coe, R. L., 1951: Family Tipulidae. *Handb. f. ident. Brit. insects IX 2* London.
- Collin, J. E., 1930a: Some new species of the Dipterous genus *Scatella* Dsv. and the differentiation of *Stictoscatella* gen. nov. (Ephydriidae). *Ent. Mo. Mag.* 66 p. 133—39.
- 1930b: A revision of the Greenland species of the Anthomyid genus *Limnophora* sens. lat. (Diptera), with figures of the male genitalia of these and many other palaeartic species. *Trans. Ent. Soc. London* 78 p. 255—82.
- 1931: Diptera (Orthorrhapha Brachycera and Cyclorrhapha) from Greenland. *Ann. Mag. Nat. Hist.* (10) 7 p. 67—91.
- 1954: A new *Crumomyia* (Dipt. Borb.) from Iceland. *Ent. Medd.* 26 p. 607—08.
- 1954: A new species of *Trachypella* (Dipt., Borboridae) from Iceland. *ibid.* 27 (in print).
- Cotterell, G. S., 1920: The life-history and habits of the yellow dungfly (*Scatophaga stercoraria*). *Proc. Zool. Soc. London* p. 629—47.
- Davíðsson, Ingólfur, 1945: Kvillar og lyf. *Kálmaðkurinn. Ársrit Garðyrkjufélags Íslands (Garðyrkjuritið)* 1945 p. 81—83.
- Duda, O., 1924: Revision der europäischen u. grönländischen sowie einiger südasiatischer Arten der Gattung *Phophila* Fallén (Diptera). *Konowia* 3 p. 97—113, 153—203.
- Dufour, Léon, 1849: Histoire des métamorphoses de *Tetanocera ferruginea*. *Ann. Soc. Ent. France* (2) 7 p. 67—79.
- Dyar, Harrison G., & Raymond C. Shannon, 1927: The North American two-winged flies of the family Simuliidae. *Proc. U. S. Nat. Mus.* 69 10.
- Edwards, F. W., 1923: On the Nematoceros Diptera of Jan Mayen Island. *Ann. Mag. Nat. Hist.* (9) 11 p. 235—40.
- 1925: British fungus-gnats (Diptera, Mycetophilidae). *Trans. Ent. Soc. London* p. 505—670.
- 1928: Diptera Protorhynchidae, Anisopodidae, Pachyneuridae, Trichoceridae. *Wytman's Gen. Ins. fasc.* 190.
- 1929: A revision of the Thaumaleidae (Dipt.). *Zool. Anz.* 82 p. 121—42.
- 1938: British short-palped crane-flies. Taxonomy of adults. *Trans. Soc. f. Brit. Ent.* 5 p. 1—168.
- H. Oldroyd, & J. Smart, 1939: British blood-sucking flies. London.
- Ekman, Sven, 1922: *Djurvärdens utbredningshistoria på skandinaviska halvön*. Stockholm.
- Emery, W. T., 1913: The morphology and biology of *Simulium vittatum*. *Kansas Univ. Sci. Bull.* 8 p. 323—62.
- Falcó, L., 1926: Diptères pupipares. *Faune de France* 14. Paris.
- Falk, P., 1940: Further observations on the ecology of Central Iceland. *J. Ecol.* 28 p. 1—41.
- Fauna Færøensis, 1916: *Ergebnisse einer Reise nach den Färöer, ausgeführt im Jahre 1912 von Alfons Dampf und Kurt v. Rosen. VI von E. O. Engel, Th. Becker, P. Stein. Zool. Jb. Syst.* 39 p. 95—102, 121—40.
- Fluke, C. L., 1933: Revision of the Syrphus flies of America North of Mexico (Diptera, Syrphidae, Syrphus s.l.). *Trans. Wisc. Acad.* 28 p. 63—126.
- Freeman, Paul, 1950: Family Anisopodidae (Rhyphidae). *Handb. f. ident. Brit. insects IX 2* p. 70—72.
- Frey, Rich., 1911: Zur Kenntnis der Dipterenfauna Finlands. I. Stratiomyidae etc. *Acta Soc. Fa. Fl. Fenn.* 34 No 6.
- 1913: idem II. Empididae. *ibid.* 37 No 3.
- 1915: idem III. Dolichopodidae. *ibid.* 40 No 5.
- 1922: Vorarbeiten zu einer Monographie der Gattung *Rhamphomyia* Meig. (Dipt., Empididae). *Not. Ent.* 2 p. 1—10, 33—45, 65—77.
- 1924: Die nordpaläarktischen *Tetanocera*-Arten (Dipt., Scatomyzidae). *ibid.* 4 p. 47—53.
- 1943: Übersicht der paläarktischen Arten der Gattung *Platypalpus* Macq. (= *Coryneta* Meig.). (Dipt. Empididae). *ibid.* 23 p. 1—19.
- 1945: Verzeichnis der bisher von den Azoren bekannten Dipteren. *Soc. Sci. Fenn. Commentationes Biol.* VIII 10.
- 1947: Entwurf einer neuen Klassifikation der Mückenfamilie *Sciaridae* II. Die nordeuropäischen Arten. *Not. Ent.* 27 p. 33—92.
- 1949: Die Dipterenfauna der Insel Madeira. *Soc. Sci. Fenn. Commentationes Biol.* VIII 16.
- 1953: *Sciaridae* aus Island. *Ent. Medd.* 26 p. 457—61.
- Frick, Kenneth E., 1952: A generic revision of the family Agromyzidae (Diptera) with a catalogue of New World species. *Univ. Calif. Publ. Ent.* 8 p. 339—452.
- Frstrup, B., 1943: Contributions to the fauna and zoogeography of Northeast Iceland. *Ent. Medd.* 23 p. 148—73.
- Gäbler, Hellmuth, 1939: Die Bedeutung der Larven von *Syrphus tricinctus* Fall. für die Vernichtung von Raupen und Afterraupen. *Tharandt. Forstl. Jb.* 90 p. 69—74.
- Gígja, Geir, 1940: Um húsflugana. *Náttúrufræðingurinn* 10 p. 129—39.
- 1944: Meindýr í húsnum og gróðri. *Reykjavík.*



- Gígja, Geir, 1945: Íslenzkt skordýratil. Reykjavík.  
 — & Ingólfur Davíðsson, 1947: Jurtasjúkdómar og meindýr. Reykjavík.  
 Goddard, W. H., 1938: The description of the puparia of fourteen British species of Sphaeroceridae (Borboridae, Diptera). Trans. Soc. Brit. Ent. 5 p. 235—58.  
 Grønlund, Chr., 1896: En islandsk Landeplage. Naturh. Smaating 2. Kjøbenhavn.  
 Guðmundsson, Jón, c. 1640: Ein stutt undirrietting um Íslands adskilianlegar náttúru. Islandica XV 1924.  
 Heiss, Elizabeth, 1938: A classification of the larvae and puparia of the Syrphidae of Illinois exclusive of aquatic forms. Illinois Biol. Mon. 16 4.  
 Hennig, Willi, 1943: Übersicht über die bisher bekannten Metamorphosenstadien der Ephyriden. Arb. morph. tax. Ent. 10 p. 105—38.  
 — 1948—52: Die Larvenformen der Dipteren I—III. Berlin.  
 Henriksen, Kai L., 1937: Insects collected on the fifth Thule Expedition. Rep. Fifth Thule Exp. 1921—24 II No. 8. Copenhagen.  
 — 1939: A revised index of the insects of Grønland. Medd. om Grønland 119 No. 10.  
 — & Will. Lundbeck, 1916: Grønlands Landarthropoder. ibid. 22 p. 484—821.  
 Holdhaus, K., 1929: Die geographische Verbreitung der Insekten. In: Schröder's Handb. d. Entom. II p. 592—1058.  
 Horrebow, Niels, 1752: Tilforladelige Efterretninger om Island. Kiøbenhavn.  
 Jakobson, G., 1899: Zoologičeskija izsledovanja na Novoi Zemlje v 1896. Nasjekomyja Novoi Zemli. Mém. Acad. Sci. St-Petersbourg (8) VIII p. 171—244.  
 Johannsen, O. A., 1903: Aquatic nematoceros Diptera. Bull. N. Y. St. Mus. 68 p. 328—441.  
 — 1935: Aquatic Diptera I—II. Mem. Cornell Univ. 177.  
 Johnson, Charles W., 1925: Fauna of New England 15. List of the Diptera or two-winged flies. Occ. Papers Boston Soc. Nat. Hist. VII.  
 Kanervo, E., 1934: Einige neue Syrphiden aus Petsamo. Ann. Soc. zool.-bot. Vanamo 14 p. 115—35.  
 Karandikar, K. R., 1931: The early stages and bionomics of Trichocera maculipennis (Meig.). Trans. Ent. Soc. London 79 p. 249—62.  
 Karl, O., 1928: Zweiflügler oder Diptera III. Muscidae. Tierw. Deutschl. 13. Jena.  
 Keilin, D., 1917: Recherches sur les Anthomyides à larves carnivores. Parasitology 9 p. 325—450.  
 Klein-Krauthelm, F., 1936: Beitrag zur Kenntnis der Eristalinen-Larven und -Puppen. Stett. Ent. Z. 97 p. 259—70.  
 Kloet, G. S., & W. D. Hincks, 1945: A check list of British insects.  
 Kreuter, E. A., 1927: Beiträge zur Kenntnis der Biologie von Hydrrellia griseola Fall. Izvestija otd. prikl. ent. 3 Leningrad.  
 Krøgerus, Rolf, 1932: Ökologie und Verbreitung der Arthropoden der Trieb-sandgebiete an den Küsten Finnlands. Acta Zool. Fenn. 12.  
 Lackschewitz, P., 1936: Das Genus Tipula in der Arktis und dem borealen Wald-gebiet Eurasiens. Trav. Inst. Zool. Acad. Sci. URSS 4 p. 245—312.  
 Leonard, M. D., 1928: A list of the insects of New York. Cornell Univ. Agr. Exp. Stat. Mem. 101.  
 Lindner, E., 1926 ff: Die Fliegen der paläarktischen Region. Stuttgart.  
 Lindroth, Carl H., 1929: Zur Land-Evertebratenfauna Islands II. Göteb. kungl. Vet. Vitt. Samh. Hdl. 5. Följd (B) I N:o 6.  
 — Die Insektenfauna Islands und ihre Probleme. Zool. Bidr. Uppsala 13 p. 105—600.  
 Lundbeck, Will., 1898: Diptera groenlandica. Vid. Medd. Nat. For. f. 1898 p. 236—314.

- Lundbeck, Will., 1907—27: Diptera Danica I—VII. Copenhagen.  
 — 1913: Orthorrhapha brachycera og Cyclorrhapha. In: Axel v. Klinckowström, Über die Insekten- und Spinnenfauna Islands und der Faeröer. Ark. f. Zool. 8 No. 12 p. 17—20.  
 Lundblad, O., 1933: Käflugorna. Medd. Stat. Växtskyddsanst. N:o 3.  
 Lundström, Carl, 1906: Beiträge zur Kenntnis der Dipterenfauna Finlands I. Mycetophilidae. Acta Soc. Fl. Fa. Fenn. 29 no. 1.  
 — 1909: idem IV. Supplement Mycetophilidae. ibid. 32 no. 2.  
 — 1912: idem VIII. Supplement II. ibid. 36 no. 1.  
 — 1914: idem IX. Suppl. 3. Mycetophilidae. ibid. 39 no. 3.  
 — 1913: Neue oder wenig bekannte europäische Mycetophiliden III. Ann. Mus. Nat. Hung. p. 305—22.  
 Madwar, S., 1935: The biology and morphology of the immature stages of Macrocera anglica Edw. Psyche 42 p. 25—34.  
 — 1937: Biology and morphology of the immature stages of Mycetophilidae. Phil. Trans. Roy. Soc. London (B) 227 p. 1—110.  
 Mallon, John S., 1917: A preliminary classification of Diptera, exclusive of Pupipara, based upon larval and pupal characters. Part I. Bull. Illinois St. Lab. Nat. Hist. 12 p. 161—409.  
 Mason, P. B., 1890: Insects and Arachnida captured in Iceland in 1889. Ent. Mo. Mag. 26 p. 198—200.  
 de Meijere, J. C. H., 1901: Ueber die Larve von Lonchoptera. Zool. Jb. Syst. 14 p. 87—132.  
 — 1910: Die Dipteren der arktischen Inseln. Fauna Arctica V 1.  
 — 1916: Beiträge zur Kenntnis der Dipterenlarven und -puppen. Zool. Jb. Syst. 40 p. 177—322.  
 — 1926: Die Larven der Agromyzinen II. Tijdschr. v. Ent. 69 p. 227—317.  
 Metcalf, C. L., 1916: Syrphidae of Maine. Maine Agr. Exp. Stat. Bull. 253 p. 193—264.  
 Miles, Mary, 1951: Studies of British Anthomyiid flies. Bull. Ent. Res. 41 p. 343—54.  
 Mohr, N., 1786: Forsøg til en islandsk Naturhistorie. Kiøbenhavn.  
 Morris, Hubert M., 1919: The larval and pupal stages of Scatopse notata L. Ann. Appl. Biol. 5 p. 202—11.  
 — 1921—22: Larval and pupal stages of the Bibionidae. Bull. Ent. Res. 12 p. 221—32.  
 — 1922—23: Idem II. ibid. 13 p. 189—95.  
 Needham, James G., & Cornelius Betten, 1901: Aquatic insects in the Adirondacks. New York St. Mus. Bull. 47 p. 383—612.  
 Nielsen, Peder, 1925: Stankelben. Danmarks Fauna 28. København.  
 Oddsson, Gísli, 1638: De mirabilibus Islandiae. Islandica X 1917.  
 Oettingen, H. von, 1935: Die wichtigsten grabbewohnenden Fliegenlarven Norddeutschlands. Nachr. über Schädlingsbek. 10 p. 62—70.  
 Olafsen, Eggert, & Biarne Povelsen, 1772: Reise igienem Island. Sorøe.  
 Parent, O., 1938: Diptères Dolichopodidae. Faune de France 35. Paris.  
 Petersen, Axel, 1924: Bidrag til de danske Simuliers Naturhistorie. Kgl. da. Vid. Selsk. Skr. nat.-math. Afd. (8) V 4.  
 Pfeiffer, Ida, 1846: Reise nach dem skandinavischen Norden und der Insel Island im Jahre 1845. 1—2. Pesth.  
 Portschinsky, I. A., 1910: Recherches biologiques sur le Stomoxys calcitrans L. et biologie comparée des mouches coprophages. Trudy Bjuro po Entom. VIII no. 8 St-Petersbourg.

- Richards, O. W., 1930: The British species of Sphaeroceridæ (Borboridæ, Diptera). *Proc. Zool. Soc. London* p. 261—345.
- Riedel, M. P., 1913: Nematocera polyneura. In: Axel v. Klinekowström, Über die Insekten- und Spinnenfauna Islands und der Færöer. *Ark. Zool.* 8 12 p. 20—21.
- Ringdahl, O., 1918: Neue nordische Anthomyiden. *Ent. Tidskr.* 39 p. 148—94.
- 1926: Neue nordische Musciden. *ibid.* 47 p. 101—18.
- 1930: Fünf neue Fliegenformen aus Island. *ibid.* 51 p. 173.
- 1951: Flugor från Lapplands, Jämtlands och Härjedalens fjälltrakter (Diptera Brachycera). *Op. Ent.* 16 p. 113—86.
- 1952: Catalogus Insectorum Sueciae XI. Diptera Cyclorrhapha: Muscaria Schizometopa Sueciae. *ibid.* 17 p. 129—86.
- 1953: Zwei neue Anthomyiinen aus Island. *Ent. Medd.* 26 p. 462—64.
- Rydén, Nils, 1953: Agromyziden aus Island. *Ent. Medd.* 26 p. 465—68.
- Sack, P., 1923: Dipteren aus Nowaja Semlja. *Rep. Sci. Res. Norw. Exp. to Novaya Zemlya* No. 5.
- Sambon, L. W., 1925: Researches on the epidemiology of cancer made in Iceland and Italy (July—October, 1924). *Journ. Trop. Med. & Hyg.* 28 p. 39—71.
- Satchell, G. H., 1947: The larvae of the British species of Psychoda. *Parasitology* 38 p. 51—69.
- Schmitz, H., 1927: Revision der Phoridengattungen. *Nat. Maandbl.* 16 p. 128—32.
- 1953: J. W. Zetterstedts Phoriden nach den in Lund vorhandenen Sammlungen. *Op. Ent.* 18 p. 124—40.
- Schwabe, G. H., 1936: Beiträge zur Kenntnis isländischer Thermalbiotope. *Arch. f. Hydrobiol. Suppl.* VI p. 161—352.
- Séguy, E., 1934: Diptères (Brachycères). (Muscidae acalypterae et Scatophagidae). *Faune de France* 28. Paris.
- Sharov, A. G., 1948: Fucellia fucorum Mg. (Diptera, Muscidae) na rybných promyslach daljnego vostoka. *Ent. Obozr.* 30 p. 124—31.
- Smart, J., 1939: — see Edwards, Oldroyd and Smart.
- 1944: The British Simuliidae. *Freshwater Biol. Ass. Brit. Emp. Sci. Publ.* 9.
- Soot-Ryen, T., 1946: Scæva arcuata Fallén 1817. *Ent. Tidskr.* 67 p. 195—97.
- Steel, A., 1931: On the structure of the immature stages of the frit fly (*Oscinella frit* Linn.). *Ann. Appl. Biol.* 18 p. 352—69.
- Stein, P., 1916: Die Anthomyiden Europas. *Arch. f. Naturg.* 81 A 10 p. 1—224.
- Stork, M. N., 1936: A contribution to the knowledge of the puparia of Anthomyidae. *Tijdschr. v. Ent.* 79 p. 94—168.
- Sturtevant, A. H., 1921: The North American species of *Drosophila*. *Carnegie Inst. Wash. Publ.* 301.
- & M. R. Wheeler, 1953: Synopses of Nearctic Ephydriidae. *Trans. Am. Ent. Soc.* 79 p. 151—261.
- Stæger, C., 1845: Grönlands Antliater. *Nat. Tidsskr.* (2) I p. 346—69.
- Thienemann, Aug., 1909: Orphnephila testacea Macq. Ein Beitrag zur Kenntnis der Fauna hygropetrica. *Ann. Biol. lac.* 4 p. 1—34.
- Thomsen, Mathias, 1938: Stueffluen (*Musca domestica*) og Stikffluen (*Stomoxys calcitrans*). *Ber. Kgl. Vet. og Landbohøjsk. Forsøgslab.* 176.
- Thor, Sig., 1930: Beiträge zur Kenntnis der invertelbraten Fauna von Svalbard. *Skr. om Svalbard og Ishavet* 27.
- Thoroddsen, P., 1911: Lýsing islands. I—IV. Kaupmannahöfn.
- Tjeder, Bo, 1948: The Swedish Prionocera (Dipt. Tipulidae). *Op. Ent.* 13 p. 75—99.
- Tonnoir, A., 1922: Synopsis des espèces Européennes du genre Psychoda. *Ann. Soc. Ent. Belgique* 62 p. 49—88.

- Tonnoir, A., 1940: A synopsis of the British Psychodidae (Dipt.), with descriptions of new species. *Trans. Soc. f. Brit. Ent.* 7 p. 21—64.
- Tuxen, S. L., 1936a: Faunaen i og ved de varme Kilder paa Island. *Ber. 19. skand. naturforskaremötet i Helsingfors* p. 510—12.
- 1936b: Die Arten der Gattung Scatella (Ephydriidae) in heissen Quellen. *Op. Ent.* 1 p. 105—11.
- 1941: Islands varme Kilder og deres Dyreliv. *Dyr i Natur og Museum* 1941 p. 45—61.
- 1944: The hot springs of Iceland. *The Zool. of Iceland* I 11.
- Vibe, Chr., 1950: Some insects new to Greenland. *Ent. Medd.* 25 p. 419—20.
- Vimmer, Ant., 1925: Larvy a kukly dvojkřídlého hmyzu středoevropského. v Praze.
- Vogler, C. H., 1900: Weitere Beiträge zur Kenntnis von Dipteren-Larven. *Limosina ciliosa* Rond. III. *Z. f. Ent.* 5 p. 289—92.
- Wahlgren, Einar, 1907—27: Tvåvingar. Diptera. *Svensk Insektfauna*. Stockholm.
- Walker, F. A., 1889: Entomology of Iceland. Notes upon a visit in 1889. *The Entomologist* 22 p. 222—25, 246—49, 273—75, 299—302.
- 1890a: The Westmann Islands. *ibid.* 23 p. 314—16.
- 1890b: List of insects taken in the Faroe and Westmann Isles, and in Iceland, 1890. *ibid.* 23 p. 374—78.
- 1890c: The botany and entomology of Iceland. *J. Trans. Victoria Inst. London* 24 p. 215—42.
- Williams, Francis X., 1938: Campsicnemus fumipennis Parent (Diptera, Dolichopodidae). *Proc. Hawaiian Ent. Soc.* 10 p. 120—26.