

Redescription of some types of Keroplatidae

(Diptera, Mycetophiloidea)

By

DIMITAR BECHEV

With 7 figures

Abstract

Redescriptions of the types of *Macrocera fastuosa*, *M. inversa*, *M. pumilio* and *Platyura oclusa* with illustrations of the genitalia are given. *Platyura oclusa* is transferred in genus *Monocentrotia*.

H. LOEW (1869) has described a number european species of superfamily *Mycetophiloidea*. By present standards his descriptions are incomplete. Moreover they are not attended by illustrations that make difficult identifications of the species.

In this paper are given enlarged descriptions of the types of four species and drawings of the genitalia. The studied type specimens are preserved in Zoologisches Museum der Humboldt-Universität, Berlin. The wing veins nomenclature by MATILE (1981) has been used.

Macrocera fastuosa LOEW

Macrocera fastuosa LOEW, 1869: 16.

Type: Male, labeled: Carlsbad, *fastuosa*, Coll. H. LOEW, 8610, Typus.

Description: Length of the wing 6.5 mm, of the body 7.5 mm, of the first flagellomere 0.75 mm.

Head yellow, post-vertex dark brown. Mouthparts yellow, palpi with yellow I and IV and brown II and III segments. Scape and pedicel yellowish, first flagellomere yellow, the rest by the type specimen absent (by two specimens from Bulgaria antennae are 1.7 x longer as body, the first three flagellomeres are yellow and the rest brown; ratio of flagellomeres I–V = 45:45:47:50:65¹). Mesoscutum yellow, with three dark longitudinal stripes. Scutellum, mediotergite and pleurae yellowish, darkened in some parts. Propleurae and mesopleurae with dark setae, rest bare. Coxae, femora and tibiae yellowish, tarsi brownish. Fore tibiae slightly enlarged at the tip. Ratio fore tibia: tarsomeres I–V = 95:75:35:20:10:8. Fore tarsomeres I–IV from below with pair of apical setae. Wing membranae without macrotrichia. Tip of the wing dark, also dark band in the middle of

¹) Ratios of the flagellomeres, tarsomeres and veins has been measured in a different enlargement of the stereomicroscope.

the wing and dark spot near rs. Costa produced at about 2/5 from distance between apex of R5 and M1. Sc ends in C above frm, Sc2 absent. R1 unthicken at the tip, R4 begin little after the tip of R1. Ratio frm: M1 + M2:mcu:tb = 8:20:15:8. Base of M very slight. Veins above with macrotrichia except rs, frm, M1 + M2, tb and mcu. Halteres yellow. Abdominal tergites I–VII yellow with dark posterior bands, the rest and genitalia black. Male genitalia (figs. 1 and 2).

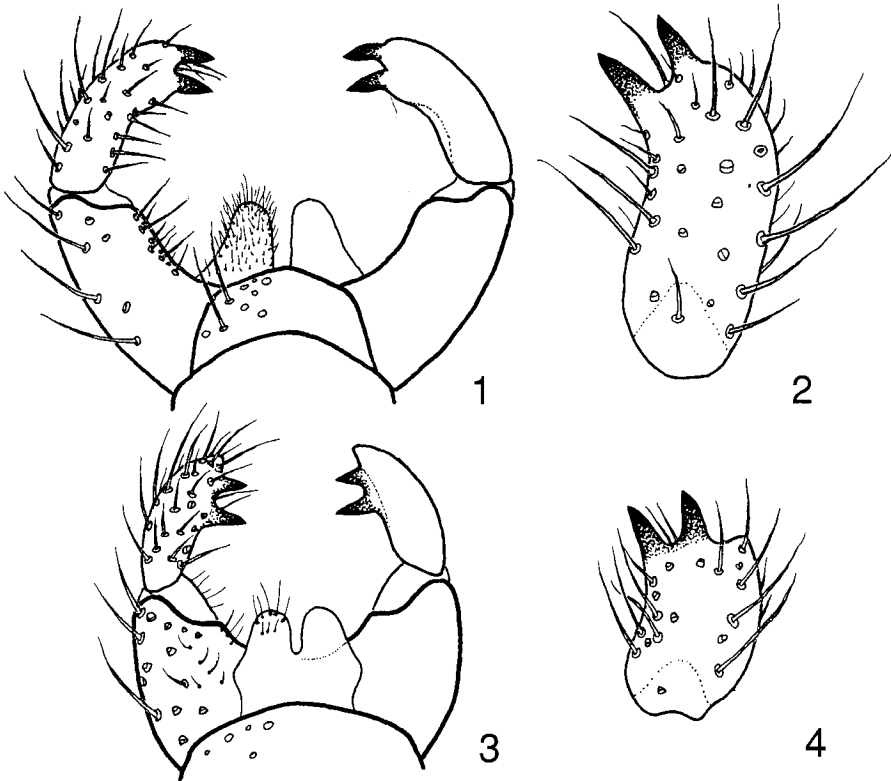
Macrocera inversa LOEW

Macrocera inversa LOEW, 1869: 16.

Type: Male, labeled: Jul. 57, *inversa* m., Coll. H. LOEW, 8611, Type.

Description: Length of the wing 5.3 mm, of the body 6.5 mm, of the antennae 7.5 mm, of the first flagellomere 0.6 mm.

Head brown, mouthparts and palpi yellow. Scape and pedicel yellow. Flagellomeres I–V yellowish, the rest brown. Antennae little longer than body. Ratio of flagellomeres



Figs. 1–2

Macrocera fastuosa. 1) male genitalia, dorsal view; 2) gonostyle

Figs. 3–4

Macrocera inversa. 3) male genitalia, dorsal view; 4) gonostyle

I–V = 40:35:35:35:40. Mesoscutum yellow, with three dark-brown longitudinal stripes. Scutellum and mediotergite brown. Pleurae yellowish with brownish spots. Propleurae and mesopleurae with some black setae. Coxae yellowish, femora and tibiae yellow, tarsi brown. Fore tibiae slightly enlarged at the tip, inside in apical half with row of short dark setulae. Ratio fore tibia: tarsomeres I–V = 90:100:33:13:8:7. Fore tarsomeres I, II and probably III from below with a pair of apical setae. Tibial hairs in length almost as diameter of tibiae. Wing membranae without macrotrichia, yellow-brown, clear, with small dark shadows near rs, frm and base of R4 + R5 and M1 + M2. Costa produced at about 1/3 from distance between R5 and M1. Sc ends in C above middle of frm. Sc2 slight, situated at base of wing. R1 unthicken at the tip, R4 begin little after the tip of R1. Frm, M1 + M2 and tb almost equal in length. M marked. Veins above with macrotrichia except rs, frm M1 + M2, tb, mcu, Cu2 and basal half of An1. Halterae yellow. Abdominal tergites I–VI yellowish, with dark posterior stripes, the rest entirely dark. Male genitalia (figs. 3 and 4) brownish.

***Macrocera pumilio* LOEW**

Macrocera pumilio LOEW, 1869: 18.

Type: Female, labeled: *pumilio*, H. LOEW, Typus.

Description: Length of the wing 3.5 mm, of the body 3.5 mm.

Head, mouthparts, palpi, antennae, thorax and legs yellowish. Ratio of flagellomeres I–V = 23:21:21:26:26. Apical flagellomeres by the type absent. Ratio fore tibia: tarsomeres I–V = 95:60:30:18:12:12. Wing membranae with macrotrichia, yellowish, without spots. Costa produced at about 1/3 from distance between apex of R5 and M1. Sc ends in C almost above the beginning of rs. Sc2 absent. R1 almost unthicken at the tip. R4 absent. Base of M very slight. Ratio frm: M1 + M2: mcu: tb = 3:10:16:7. Veins above with macrotrichia except rs, frm, M1 + M2, tb and mcu. Halterae yellow. Abdominal tergite I brown, II–IV brownish with pale posterior edges, the rest yellow-brown. Female genitalia (fig. 7).

***Monocentrotta oclusa* (LOEW)**

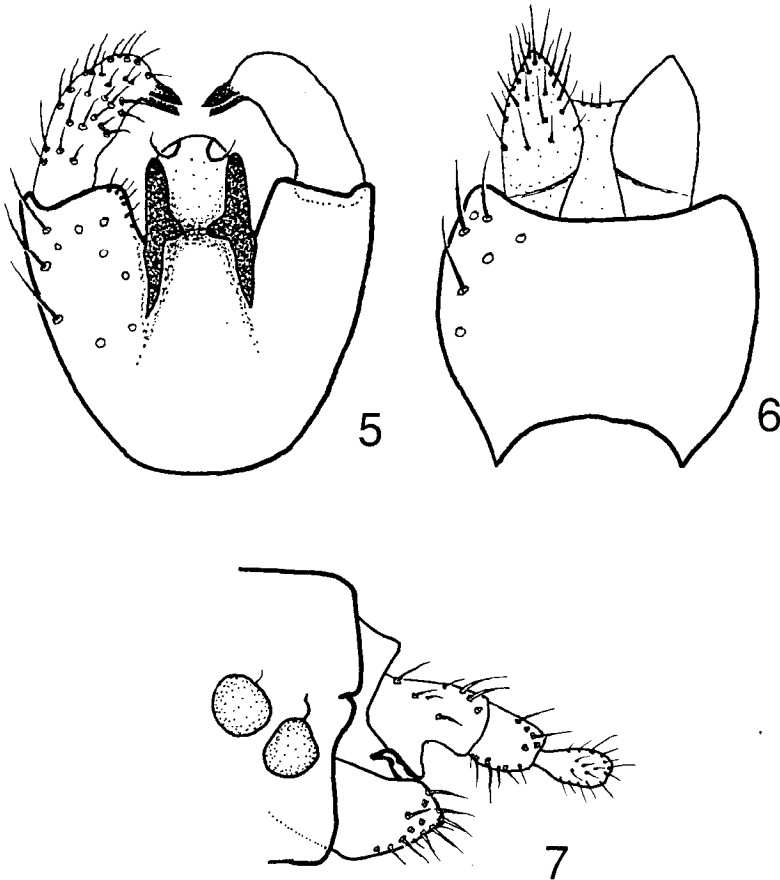
Platyura oclusa LOEW, 1869: 15.

Monocentrotta oclusa (LOEW, 1869), *comb. n.*

Type: Male, labeled: Jun. 64, *occlusa*, Coll. H. LOEW, Typus.

Description: Length of the wing 3.6 mm.

Head dark brown. Antennae with scape, pedicel and 14 flagellomeres. Thorax dark brown. Mesoscutum with bare stripes and small yellowish humeral spots. Propleurae with setae, laterotergite with great number of hairs. Coxae dark-brown, femora and tibiae yellowish, tarsi brown. Tibial bristles in apical 2/3 in regular rows, in basal 1/3 irregular. All tibiae with single spur. Ratio fore tibia: tarsomeres I–V = 55:52:38:30:18:15. Costa produced at 1/2 from distance between apex of R5 and M1. Sc short, ends free. An nearly reaches the wing margin. R4 ends in C touching the tip of Sc. Base of M scarcely visible. C, R1, R4 + R5 and R5 with macrotrichia. Halterae yellowish, with prolonged knob. Abdomen dark brown. Male genitalia (figs. 5 and 6).



Figs. 5–6

Monocentrotroa occlusa. 5) male genitalia, ventral view; 6) male genitalia, lateral view

Fig. 7

Macrocera pumilio. female genitalia, lateral view

Acknowledgements

I am very grateful to Dr. H. SCHUMANN for the loan of type specimens.

References

- LOEW, H. (1869): Beschreibungen europäischer Dipteren. — Halle: 310pp.
 MATILE, L. (1981): Description d'un Keroplatidae du crétaé moyen et données morphologiques et taxonomiques sur les Mycetophiloidea (Diptera). — Anns. Soc. ent. Fr. 17(1): 99–123.

Author's address:

Dr. DIMITAR BECHEV
 Department of Zoology, Plovdiv University
 24, Tzar Assen Str., 4000 Plovdiv, Bulgaria