

Japanese Fungivoridae (Diptera) III*

New or Little-known fungus gnats from the Tsushima Islands

By

MIITSUHIRO SASAKAWA** and NOBUZANE TAMU***

(1961)

1. *Cerotelion abdominalis* sp. nov.

Male. Head yellow; vertex and occiput yellowish to pale brown, postgenae dorsally brown-tinged, ocelli and ocellar triangle brown; antennae yellowish brown; palpi yellow. Thorax yellow, with a slight brown tinge; mesonotum with three pale brown stripes and brownish lateral margins; pronotum, propleura, mesopleura and sternopleura testaceous; postnotum somewhat brownish laterally. Wings hyaline, slightly tinged with brown, but more or less fuscous on apical one-third, forking part between R and M and along vein of Cu_2 ; veins pale brown; halteres with stalks yellow but knobs dark brown. Legs yellow; distal one-fourth of coxae, trochanters and proximal ends of femora of mid- and hind-legs fuscous, dorsodistal part of hind-femora and proximal halves of hind-tibiae more or less brownish; spurs brown. Abdomen slightly grayish pruinose; first to third tergites and first sternite yellowish brown, second and third tergites with a pair of yellow and oval spots laterally; fourth tergite yellow, faintly brown-tinged dorsally and laterocaudally; second to fourth sternites yellow, with brownish caudal margins; fifth to seventh segments entirely black; hypopygium yellow, epandrium slightly brown-tinged.

Head with vertex, ocellar triangle and occiput densely setulose; distance between posterior ocelli about one-third width of vertex; eyes with white, rather long, dense hairs; fronto-clypeus about one-eighth as wide as width of head, bearing minute setae ventrally. Antennae almost as long as thoracic length; scapes and pedicels projected ventrally; flagellar segments flattened, each covered with minute sensory setulae and with setae only along dorsal margin, about quadruple as wide as long on third segment, broadest on the sixth, narrowing apically, about twice as wide as long on the thirteenth, suboval in form on the last fourteenth. Maxillary palpi with first segment minute, second large and elongate-oval, setigerous laterally. Thorax with pronotum, mesonotum, scutellum and propleura covered with brown short setae; mesopleura with setulae on dorsal corner. Wing slightly shorter than abdomen; costa reaching almost midway between terminations of R_5 and M_1 ; Sc rather short; M weak. Leg with fore-tibia equal to first tarsal segment in length; first tarsal segments of mid and hind legs with two rows and the second of that with one row of ventral setae; inner spur of mid-leg about thrice as long as the outer and about one and a half times as long as spur of fore-leg; inner spur of hind-leg about twice as long as the outer. Abdomen densely covered with setae. Hypopygium with epandrium suboval, but deeply emarginate on basal part, bearing many long setae; hypandrium subrectangular, basally emarginate, with narrow membranous incision posteriorly, bearing twenty-three to twenty-five short spines on each posteromesal lobiform part and many short setae; basistylus ventrally united with hypandrium, bearing many long setae laterally; dististylus about one-half as long as basistylus, with a minute projection on dorsoapical part and long, arcuate projection ventrally, bearing about ten rather sharp, inwardly directed spines in two irregular rows; aedeagus about 120 microns long, subtriangular, with very long, broad basal arch and with three pairs of sensillae at apical end, proximally

* Contribution from Entomological Laboratory, Kyoto Prefectural University, Kyoto. No. 79.

** Entomological Laboratory, Faculty of Agriculture, Kyoto Prefectural University, Kyoto.

*** Biological Laboratory, Heian High School, Kyoto.

with dicotyledonous, setulose and chitinous plates; ejaculatory duct about 220 microns long, apodeme about 45 microns long; parameral apodeme united basally with arch of aedeagus.

Female unknown.

Body length: 5 mm; wing length: 3.3 mm.

Habitat: Japan (Kyushu).

Holotype: ♂, Izuhara, Tsushima Is., 22. VII. 1959, M. SASAKAWA leg.; deposited in the Entomological Laboratory, Kyoto Prefectural University.

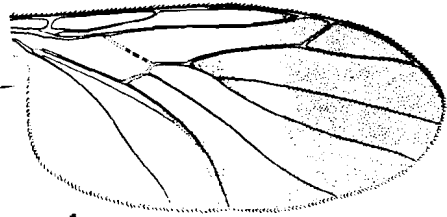
This species is highly specific in the coloration of wing and abdomen and in the structure of male hypopygium.

2. *Neoempheria ferruginea* BRUNETTI

Mycomyia ferruginea BRUNETTI, 1912, Fauna Brit. India, Dipt., Nemat., p. 74.

1♂ 2♀♀, Izuhara, Tsushima, 22. VII. 1959, SASAKAWA leg.

Distr.: Japan (Hokkaido, Kyushu- new record), Manchuria, N. India.



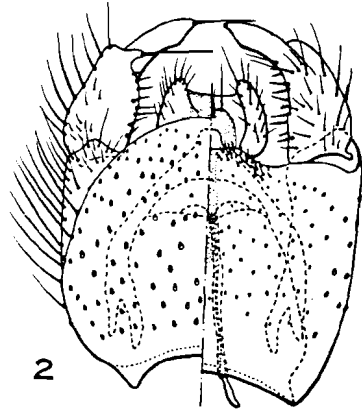
1

3. *Neoempheria pictipennis* HALIDAY

Sciophila pictipennis HALIDAY, 1833, Ent. month. Mag., 1: 156.

1♀, Uchiyama, Tsushima, 23. VII. 1959, SASAKAWA leg.

Distr.: Europe, Japan (Kyushu)- new record.



2

Cerotelion abdominalis SASAKAWA et TAMU, n. sp.

1: wing; 2: male hypopygium.

4. *Tetragoneura otohimeana* OKADA

Tetragoneura otohimeana OKADA, 1939, Jour. Facul. Agr., Hokkaido Imp. Univ., 42: 317.

1♀, Uchiyama, Tsushima, 23. VII. 1959, SASAKAWA leg.

Distr.: Japan (Hokkaido, Kyushu- new record).

5. *Delopsis aterrima* ZETTERSTEDT

Mycetophila aterrima ZETTERSTEDT, 1852, Dipt. Scand., 11: 4225.

1♀, Izuhara, 25. VII. 1959, SASAKAWA leg.

Distr.: Europe, Japan (Hokkaido, Honshu, Kyushu).

対馬産キノコバエ5種について

笹川満広・丹信実

私たちは、日本小島嶼の生物地理学的研究の一環として、1959年7月対馬動・植物相の調査を行ったとき、若干のキノコバエを採集することができた。従来、本島産のキノコバエに関しては全く知見がないようであるが、ここに1新種及び1日本未記録種を含む5種が分布することを明らかにした。末筆ながら、本調査に対してあたたかい御援助を賜わった平安高等学校長近藤亮雅、里内了徹両先生に厚くお礼申上げる。