

Additional new Neotropical *Epicypsta* (Diptera, Mycetophilidae,
Mycetophilinae)

1960

By J. Lane

Departamento de Parasitologia, Faculdade de Higiene e Saúde Pública,
Universidade de São Paulo, Brasil

(With 6 text-figures)

In this paper ten species are mentioned of which six are new. The known ones are treated from the zoogeographical point of view as, in some cases, considerable extension of range was noted. The number of registry is that of the entomological collection in our Department. Some of the specific names were taken from tribes of Indians found in South America.

Epicypsta (*Epicypsta*) *aczéli* Lane

1958. Lane. 10th. Int. Cong. Ent.

Argentina, Prov. de Chaco, Colonia Benitez, XI.1949 (M. Aczél col.), Prov. de Tucumán, Dique Cadilla, I.1957 (R. Golbach col.); Brazil, State of S. Paulo, Barueri, VIII.1955 (K. Lenko col.). Trinidad (B.W.I.), U. S. Naval Station, XI.1955, IX.1957, San José Point, IX.1957 (T.H.C. Aitken col.).

Epicypsta (*Epicypsta*) *guanensis* Lane

1951. Lane. *Dusenía*, 2 (5): 338.

Argentina, Prov. de Tucumán, Dique Cadilla, I.1957 (R. Golbach col.).

Epicypa (Epicypa) neotropicalis (Lane)

1947. *Platurocypta* Lane. Rev. Ent., 18: 450.
1954. *Epicypa (Epicypa)* Lane. Rev. Bras. Ent., 2: 115.

Brazil, State of Santa Catarina, Florianópolis, V.1957 (F. Neto col.); State of S. Paulo, Barueri, VIII.1955 (K. Lenko col.). Trinidad (B.W.I.), Chaguanas, 1.1958 (C.H.T. Aitken col.).

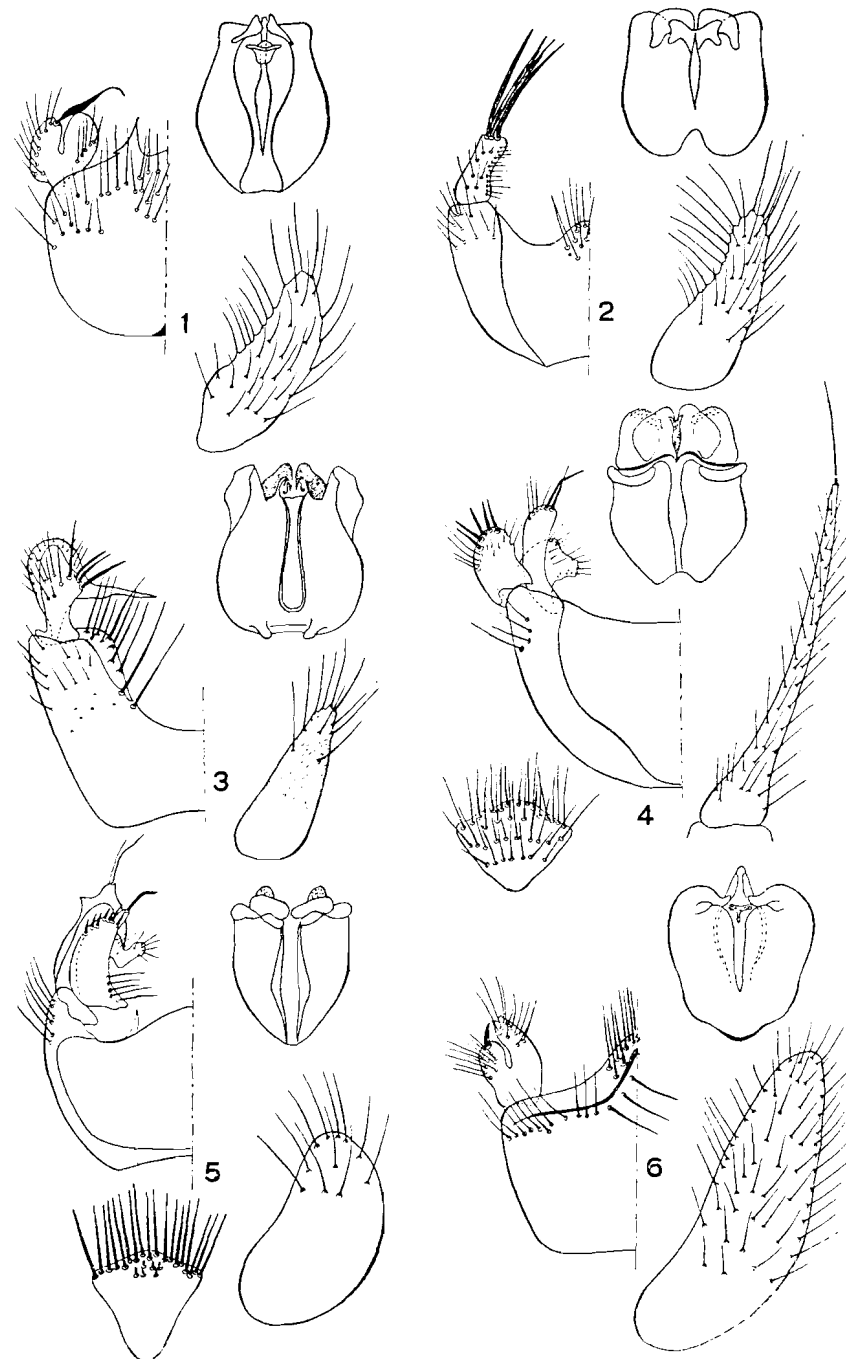
Epicypa (Boscmyia) forattinii, n. sp.

Male. — Head: Mouth parts and palpus brown. Front blackish. Antenna with brown scape and torus; flagellum blackish but basal segments lighter. Occiput blackish with yellowish white hairs. Thorax: Pronotum brownish. Mesonotum with yellowish basal colour and three large marks over most of disk; a mesial anterior reddish one fused with each lateral blackish mark, these blackish marks blend in the prescutellar area, the sides of the reddish mark form an inconspicuous brown V.; covering of yellow hairs. Scutellum brown, lighter at sides, with four marginal setae. Postnotum dark brown in the middle, yellowish on the sides. Pleura brownish, lighter below; pleurotergite darkened at margin. Wing hyaline, lower fork slightly before upper one. Haltere yellowish. Legs yellowish but mid femur narrowly blackish at apex while the hind one has the whole apical fourth blackened. Mid tibia with 5 dorsal, 3 external and 2 ventral setae. Hind tibia with 6 dorsal and 6 external setae. Abdomen: lost in mounting. Genitalia (Fig. 1): Basistyle with lobes fused, with two elongations in the middle and, between them, numerous setae. Dististyle a single lobe with a flame-shaped seta at apex, nearly slit in the middle and with a row of internal setae. Mesosome as in figure. Ninth tergite elongate and as long as basistyle.

Female. — Similar to the male. Abdomen blackish brown, only segments IV and V with yellowish basal markings.

Types. — Holotype male, allotype female, paratype one female; registered under ns. 13.257 to 13.259.

Type locality. — Brasil, State of Mato Grosso, Bataguassú, rio Três Barras, VIII.1955 (O. P. Forattini col.).



Male genitalia of *Epicypa*, showing basistyle and dististyle, mesosome, 9th tergite (and central plate in figs. 4-5). Fig. 1. *E. (Boscmyia) forattinii* n. sp. — Fig. 2. *E. (B.) williamsi* n. sp. — Fig. 3. *E. (Callicypta) anambesi* n. sp. — Fig. 4. *E. (C.) iranchesi* n. sp. — Fig. 5. *E. (C.) tacanhapesi* n. sp. — Fig. 6. *E. (C.) trinidadensis* n. sp.

Notes. — This species is near *E. barai* Lane (1954) but has a completely different male genitalia, mesonotal pattern as well as other characters. We name it in honor to its collector and our friend Dr. O. P. Forattini.

***Epicrypta (Boscmia) williamsi*, n. sp.**

Male. — Head: Mouth parts and palpus yellowish. Frons yellowish. Antenna with yellowish scape, torus and basal five or six flagellar segments, the rest progressively becoming blackish. Occiput yellowish brown with hairs of this color. Thorax: Pronotum brownish. Mesonotum shining with brown integument shading to yellowish in sides and front, covered with yellowish hair and brown setae. Scutellum blackish in the middle, laterally narrowly yellowish at sides with four marginal setae. Postnotum blackish in the middle and yellowish at the sides. Pleura, katepisternite, base of pleurotergite yellowish, the rest brownish. Wing: Hyaline with a large brownish mark in the middle from base of upper fork and invading the costal cell. Both forks at about the same level. Haltere with whitish stem and black knob. Legs: Yellowish but apex of mid femur narrowly black, that of hind one with about the whole fifth blackish. Mid tibia with 5 dorsal, 1 external, and 3 ventral stout setae. Hind tibia with 8 dorsal and 7 external stout setae. Abdomen; Yellowish but segment II to V darkened on the sides, VI brown at apex. Genitalia (Fig. 2): Basistyle with the lobes fused, protuberant in the middle where there are numerous setae. Dististyle a single elongate lobe ending in four stout setae and bearing rows of internal setae at right angles to it. Mesosome as in the figure. Ninth tergites nearly as long as both basistyles and dististyles, setose.

Female. — Similar to male but mid femur completely blackish. Abdomen blackish with base of II to V yellowish. Last segments yellowish at apex as well as the small, short cerci.

Types. — Holotype male, allotype female; registered under ns. 13.260 and 13.261.

Type locality. — Brasil, State of S. Paulo, S. Miguel Archanjo, Turvo dos Hilários, X.1953 (J. Lane col.).

Notes. — This species is near *E. linguasi* Lane (1954) but differs in coloration as well as other details and the characters of the male genitalia. We dedicate it to our friend and cousin Mr. Horace Elbert Williams.

***Epicrypta (Callicypta) anambesi*, n. sp.**

Male. — Head: Mouth parts and palpus brownish. Frons yellowish brown. Antenna with yellowish scape and torus; flagellum blackish. Occiput yellowish with yellow hairs. Thorax: Pronotum yellowish brown. Mesonotum yellowish brown, the prescutellar region with a quadrate blackish mark which is broader than long; covered with brown hairs. Scutellum blackish at the extreme base, the rest yellowish with four stout marginal setae. Postnotum slightly yellowish brown in the middle, yellowish over the rest. Pleura, anepisternite, upper portion of pteropleurite and margin of pleurotergite brownish, the rest yellowish. Wing hyaline, lower fork quite before the upper one. Haltere yellowish. Legs yellowish. Mid tibia with 5 dorsal, 3 external and 3 ventral setae. Hind tibia with 5 dorsal and 6 external setae. Abdomen reddish brown dark brown hairs. Genitalia (Fig. 3): Basistyle with the lobes fused, concave in the middle where it is nude. the setae on lateral internal margin. Dististyle a large lobe with many setae superiorly and an elongate internal slender protuberance. Mesosome as in figure. Ninth tergite slender and about as long as the basistyle.

Types. — Holotype male, registered under n. 13.262.

Type locality. — Brasil, State of Mato Grosso, Bataguassú, rio Caraguatá, VIII.1956 (O. P. Forattini col.).

Notes. — This species is near *E. macunai* Lane (1954) but the coloration and structures of male genitalia separate it from others of this subgenus.

***Epicrypta (Callicypta) iranchesi*, n. sp.**

Male. — Head: Mouth parts and palpus brown. Frons yellowish. Antenna with scape, torus and first five or six flagellar segments yellowish, the rest blackish. Occiput yellowish with yellow hairs. Thorax: Pronotum yellowish. Mesonotum yellowish with a large quadrate, brown mark on the prescutellar region, and two above it. Scutellum yellowish with four marginal setae. Postnotum brownish. Pleura yellowish but margins of anepisternite and pleurotergite darkened as well as posterior portion of hypopleurite. Wings: hyaline, costal vein beyond *R*. Veins of forks not reaching margin of wing. Lower fork slightly before the upper one. Haltere yellowish. Legs: yellowish, the hind femur blackish on distal fifth. Mid tibia with 5 dorsal,

2 external and 2 ventral setae. Hind tibia with 5 dorsal and 6 external setae. Abdomen: Apparently with broad yellow bands on segments III to V while VI is completely yellowish. Genitalia (Fig. 4): Basistyle with the lobes fused, concave mesially. Dististyle in several lobes one of them bearing four stout apical setae. Mesosome as in the figure. A densely setose mesial triangular plate. Ninth tergites in two plates of which the apical one is very long and slender and is longer than the whole genitalia.

Type. — Holotype male, registered under n. 13.263.

Type locality. — Trinidad (B.W.I.), U. S. Navy Base, XI.1955 (T.H.C. Aitken col.).

Note. — This species is near *E. inornata* (Lane, 1948) from which it can be separated by the adult characters and peculiar male genitalia.

Epicypta (Callicypta) paulistensis Lane

1948. *Epicypta* Lane, Rev. Ent., 19: 236.

1954. *Epicypta (Callicypta)* Lane, Rev. Bras. Ent., 2: 128.

Costa Rica, San José, no date (H. Schmidt col.). Trinidad (B.W.I.), U. S. Naval Station, X.1957 (T.H.C. Aitken col.).

Epicypta (Callicypta) tacanhapesi, n. sp.

Male. — Head: Mouth parts, palpus and frons yellowish. Antenna with yellowish scape, torus and first three flagellar segments, IV to VIII or IX narrowly yellowish at base, the rest and apex blackish. Occiput yellowish. Thorax: Pronotum brownish yellow. Mesonotum dull, yellowish but lighter in front and behind; prescutellar region adjoining scutellum narrowly blackish. Scutellum yellowish with four stout marginal setae. Postnotum yellowish. Pleura yellowish, margins of anepisternite and pleurotergite brownish. Wing hyaline. Lower fork quite before the upper one. Haltere yellowish. Legs yellowish but hind femur blackish at apical fifth. Mid tibia with 3 dorsal, 3 external and 1 ventral setae. Hind tibia with 5 dorsal and 6 external setae. Abdomen: blackish but apex of segments with yellowish band. Genitalia (Fig. 5): Basistyle with lobes fused, protuberant in the middle, setae lateral. There is a triangular structure in the middle which is densely setose. Dististyle with

basal lobe divided into several structures as in the figure. Mesosome as in the figure. Ninth tergite ovate and about as long as the basistyle.

Female. — Similar to male. Cerci small and yellow.

Types. — Holotype male, allotype female, registered under ns. 13.264 and 13.265.

Type locality. — Trinidad (B.W.I.) Navy Base, X.1955, holotype and Macqueripe, VII.53, allotype (C.H.I. Aitken col.).

Notes. — This species is near *E. inornata* Lane (1948) but can be separated from it by coloration characters and male genitalia.

Epicypta (Callicypta) trinidadensis, n. sp.

Male. — Head: Mouth parts, palpus and frons dark brown. Antenna with scape, torus as well as the first three or four segments yellowish, the rest blackish. Occiput blackish brown with yellowish white hairs. Thorax: Pronotum brown. Mesonotum dark brown, anterior margin narrowly yellowish, an anterior cuneiform reddish mark, prescutellar region with two blackish marks. Scutellum brown, yellowish in the margin, with four marginal setae. Postnotum dark brown in the middle, narrowly yellowish at the sides. Pleura brown including the hypopleurite. Wing with a very small blackish spot in the middle. Lower fork a little before the upper one. Haltere yellowish. Legs yellowish, the hind femur with apical fourth blackish. Mid tibia (setae not seen). Hind tibia with 5 dorsal and 5 external setae. Abdomen dark brown, segments with yellow apical bands. Genitalia (Fig. 6): Basistyle with lobes fused with many setae an upper margin and a sclerotized V-shaped structure. Dististyle small, a single divided lobe bearing numerous setae and a stout spine. Mesosome as in figure. Ninth tergite very long, quite longer than length of both basistyle and dististyle.

Types. — Holotype male, registered under n. 13.266.

Type locality. — Trinidad (B.W.I.), Sangre Grande, Mandillan Road, 17.1.57 (I.H.C. Aitken col.).

Notes. — Caught with net. This species is near *E. johannseni* Lane (1946) from which it can be separated by the characters of male genitalia as well the adult coloration.

Acknowledgements

We take pleasure in thanking Dr. T.H.C. Aitken of the Trinidad Regional Virus Laboratory at Port of Spain, Trinidad, Drs. M. Aczél, R. Golbach and W. Willink of the Instituto Miguel Lillo of the University of Tucumán, Argentina and Dr. Karol Lenko of Barueri, State of S. Paulo for the gift or loan of most of the material here studied and also Mr. E. B. Ferraz for making the drawings illustrating this paper.