

## FURTHER NEW "MYCETOPHILA" (Diptera, Mycetophilidae, Mycetophilinae)<sup>1</sup>

J. LANE

Faculdade de Higiene e Saúde Pública, S. Paulo

(With 13 text-figures)

Twenty species are reported in this paper. Of these twelve are described as new, the allotype of *Mycetophila (Abmyceta) barrettoi* (Lane, 1947) is selected and the remaining seven species are included as the new localities extend considerably their range. This genus is the largest in the Neotropical Region and we believe that our separation of species in subgenera aids their determination considerably. Some of the new species were named after tribes of South American Indians. The registry numbers are those of the entomological collection in our Department.

It is a pleasure to thank the collectors of the material here studied as well as the Institutions who loaned them. The drawings were made by Mr. E. B. Ferraz.

### *Mycetophila (Mycetophila) boracensis* Lane, 1948

1948 Lane. *Rev. Ent.*, 19 (1/2): 257.

1952 Lane. *Dusenla*, 3 (6): 425.

*Distribution* — GUATEMALA, Guatemala City, VII.1923 (E. G. Smyth col.).

### *Mycetophila (Mycetophila) tobasi* sp. n.

Length of body 8 mm, length of wing 10 mm.

*Male* — Head: Mouth parts and palpus brownish. Frons blackish brown. Antenna scape, torus and flagellum brownish, darker at apex. Occiput blackish brown with a mesial longitudinal groove.

<sup>1</sup> Received for publication June 24, 1958.

From the Departamento de Parasitologia Dir.: Prof. Dr. Paulo C. A. Antunes da Faculdade de Higiene e Saúde Pública da Universidade de S. Paulo, Brazil.

Thorax: Pronotum yellowish brown. Mesonotum yellowish brown with three dark brown marks, the mesial one divided nearly to posterior portion. Scutellum apparently blackish (transfixed by pin). Postnotum blackish brown. Pleura yellowish brown.

Wing: Similar to that of *M. armatura* Freeman, 1951 but marks on apex of wing connected anteriorly leaving the two spots on fork of lower vein free. Haltere yellowish brown.

Legs yellowish brown. Mid tibia with 3d. 6 short e. and 7 shorter v. setae 10 yet shorter i. setae from nearly base to apex. Hind tibia with 4d., 5e. and 6 or 7 i. setae, all setae short.

Abdomen: Brown, segments V with an apical yellowish narrow band, III and IV with bands at base and apex (rest not seen).

Genitalia (fig. 1): Basistyle with lobes fused into an elongate structure bearing two setae on upper margin. Dististyle as in the figure. Mesosome very small, attenuated to apex where there are two retrose hooklike structures. Ninth tergites also very small, about only one third the length of basistyles.

*Female* — Unknown.

*Type* — Holotype male, registered under n. 13.292.

*Type locality* — ARGENTINA. Ter. Neuquén, Mallo (1700 m alt.), 19.III.1954 (S. Schajovskoi col.).

*Notes* — This species is near *M. armatura* Freeman, 1951 but can be separated by coloration characters as well as structures of male genitalia.

*Mycetophila (Mycetophila) vaurasi* sp. n.

*Male* — Head: Mouth parts, palpus and frons yellowish, antenna yellowish, apical flagellar segments slightly darker. Occiput yellowish.

Thorax: Pronotum yellowish brown. Mesonotum with margin whitish yellow, the middle showing three diluted brownish marks; two small rounded prescutellar spots. Scutellum yellowish with two basal brownish spots and four marginal setae. Postnotum brownish. Pleura yellowish brown.

Wing hyaline, the lower fork quite beyond the upper one. Haltere yellow.

Legs yellowish. Mid tibia with 5d., 3e., and 2i. setae. Hind tibia (from a paratype) with 5d. and 4e. setae.

Abdomen brown.

Genitalia (fig. 2): Basistyle with lobes fused, nearly as long as wide, upper margin slightly concave. Dististyle with first lobe a rounded plate bearing three broad, nearly equidistant, spines; second long lobe with a basal, quadrate, protuberance, two stout apical setae and many dorsal hairs. Mesosome as in the figure. Ninth tergite shorter than basistyle, subtriangular setose.

*Female* — Unknown.

*Types* — Holotype male, paratype three males. Holotype and one paratype to be returned to the British Museum (Natural History), two paratypes registered in our collection under ns. 13.290 and 13.291.

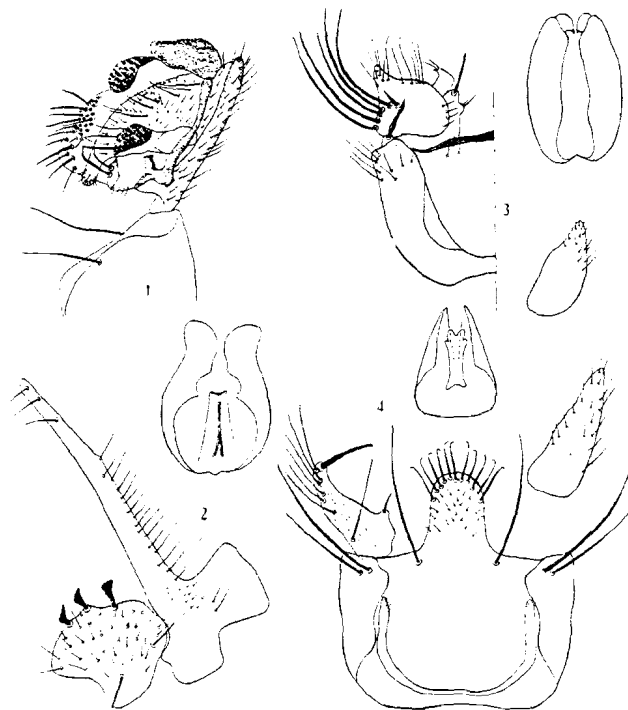


Fig. 1 — *Mycetophila (Mycetophila) tobiasi* sp. n., dististyle; fig. 2 — *Mycetophila (Mycetophila) vaurasi* sp. n., both lobe of dististyle and mesosome; fig. 3 — *Mycetophila (Mycetophila) vaurasi* sp. n., basistyle, dististyle, mesosome and ninth tergite in dorso-ventral position; fig. 4 — *Mycetophila (Mycetophila) vaurasi* sp. n., basistyle, dististyle, mesosome and ninth tergite in dorso-ventral position.

*Type locality* — BRASIL, State of Santa Catarina V.1937 (holotype) V.1938 (paratype) (Fritz Plaumann col.); State of Bahia, Ilhéus, VII.1930 (Davis & Shannon col.); TRINIDAD (B.W.I.), Chaguaramas, IX.1957 (T.H.C. Aitken col.).

*Notes* — This species is close to *M. curvata* Lane, 1952, but can be separated from it by the characters of male genitalia besides others.

*Mycetophila (Oromyceta) javaesi* Lane, 19551955 Lane, *Trans. R. ent. Soc. London*, 106 (10): 397.

*Distribution* — TRINIDAD (B. W. I.), Chaguaramas, I.1958; U. S. Navy Base, XII.1955, San José Point, VIII.1957, Macqueripe, VIII.1957, Tenbladora, IX.1957 (T. H. C. Aitken col.); ARGENTINA, Prov. de Salta, Aguaray, II.1950 (R. Golbach col.).

*Mycetophila (Abmyceta) arauasi* sp. n.

*Male* — Head: Mouth parts brownish. Palpus yellowish. Frons brownish. Antenna yellowish brown. Occiput brownish with yellowish hairs.

Thorax: Pronotum brownish. Mesonotum light brown, sides anteriorly and posteriorly yellowish, a dark brown V-shaped mark uniting at prescutellar region where it forms a spot; at sides of V-shaped mark a longitudinal brown line. Scutellum brownish, margin darker with the four marginal setae. Postnotum brown in the middle, yellowish at the sides. Pleura light brown, yellowish below, margin of pleurotergite and whole hypopleurite brown.

Wing hyaline, lower fork distinctly beyond the upper one. Haltere yellowish.

Legs: Yellowish hind femur slightly darkened at apex. Mid tibia with 5d., 2e., 1v. and 2i. setae. Hind tibia with 6d. and 7e. setae.

Abdomen brownish with indistinctly apical yellowish bands.

*Genitalia* (fig. 3): Basistyle with lobes fused. Dististyle with three lobes, the larger one bearing a lateral external row of setae at basal portion. Mesosome as in figure. Ninth tergite very small, setose.

*Female* — Similar to the male, last segment and cerci yellowish.

*Types* — Holotype male, allotype female, paratypes, one male and two females registered under ns. 13.267 to 13.271.

*Type locality* — Trinidad (B. W. I.) U. S. Navy Base, XII.1955, one paratype Chaguaramas, Tucker Valley, IX.56 (T.H.C. Aitken col.).

*Notes* — This species is near *M. uboyasi* Lane, 1955, but can be separated from it by coloration characters and male genitalia.

*Mycetophila (Abmyceta) barrettoi* (Lane, 1947)

We have four specimens from Trinidad, two of which are males. We have selected one of the males as the allotype of this species, and describe it below.

*Allotype* — Similar to female.

*Genitalia* (fig. 4): Basistyle with lobes fused and forming a very long mesial protuberance which is densely setose, at base of protuberance a seta on each side. Dististyle in one lobe which bears a small internal seta at base

and a long, stout spine on the attenuated apex. Mesosome and ninth tergites as in figure.

*Type* — Allotype registered under n. 13.272.

*Distribution* — TRINIDAD (B. W. I.), Chaguaramas, I.1958, allotype and two specimens, Macqueripe, VIII.1957, the remaining female (T. H. C. Aitken col.).

*Mycetophila (Mycetophila) basalis* Freeman, 19511951 Freeman, *Dipt. Pat. & S. Chile*, 3: 120.

*Distribution* — ARGENTINA, Prov. de Tucumán, Tafi del Valle, XII.1950 (R. Golbach col.), Ter. Santa Cruz, Lago Argentino, Brazo Obello, II.1953 (W. Willink col.).

*Mycetophila (Abmyceta) borgmeieri* Edwards, 19321932 Edwards, *Rev. Ent.*, 2: 149.1948 Lane, *Rev. Ent.*, 19: 258.1955 *Mycetophila (Abmyceta)* Lane, *Trans. R. ent. Soc. London*, 106 (10): 402.

*Distribution* — ARGENTINA, Prov. de Tucumán, Tafi del Valle, XII.1950; Aconquija, Prov. de Catamarca, El Suncho, II.1957 (R. Golbach col.).

*Mycetophila (Abmyceta) carrerai* sp. n.

*Male* — Head: Mouth parts, palpus and frons yellowish. Antenna yellowish. Occiput brownish with an indistinct blackish longitudinal line in the middle.

Thorax: Pronotum yellowish. Mesonotum brown in the middle, yellowish white on the sides, two narrow brown lines cross the disk reaching the two dark brown, small prescutellar spots. Scutellum yellowish but with two brown lines in continuation to the mesonotal ones; four marginal setae. Postnotum yellowish, slightly darker in the middle. Pleura yellowish but hind margin of pleurotergite with darker margin.

Wing hyaline, upper vein of lower fork represented only by the apical portion of stem which is faint. Haltere yellowish.

Legs yellowish but dorsum of mid and hind femora darkened. Mid tibia with 3d., 2e., 2v. and 2i. setae. Hind tibia with 5d. and 7e. setae.

Abdomen: Segments blackish with very narrow apical bands.

*Genitalia* (fig. 5): Basistyle with the lobes fused and broader than long, upper margin sclerotized. Dististyle in several sclerotized lobes as in the figure. Mesosome as in the figure. Ninth tergites in two lobes, the outer one slender and bearing at base a round structure with setose apex.

*Female* — Unknown.

*Types*: Holotype male, registered under n. 13.276.

*Type locality:* BRASIL, State of S. Paulo, Salesopolis, Boracá, VII.1949 (J. Lane & E. J. Coher col.).

*Notes* — We take pleasure in dedicating this species to our old friend Messias Carrera who has done much to place Neotropical Dipterology on a sound taxonomical basis.

This species is very peculiar showing characters which approximate this subgenus to *Zygomya*. Its adult structures and male genitalia separate it from all others belonging to this subgenus.

*Mycetophila (Abmyceta) costaricensis* sp. n.

*Male* — Head: Mouth parts, palpus and frons yellowish. Antenna with yellowish scape and torus, flagellum darkened. Occiput yellowish, a darker indefinite line in the middle.

Thorax: Pronotum yellowish. Mesonotum yellowish with darker lateral irregular lines and marks on prescutellar region and much as in *M. tapinivai* Lane, 1955. Scutellum yellowish with four marginal lines. Postnotum yellowish. Pleura yellowish, the margin of pleurotergite darkened as well as the brownish hypopleurite.

Wing hyaline, the lower fork distinctly beyond the upper one. Haltere yellowish.

Legs yellowish. Mid tibia with 5d., 3e., 2v. and 3i. setae. Hind tibia with 7 d. and 6e. setae.

Abdomen (not seen).

Genitalia (fig. 6): Basistyle into two very shallow lobes, bearing very long setae on the upper margin. A mesial structure ending in two spines. Dististyle reduced to two stout spines on shallow plate. Mesosome and ninth tergite as in the figure.

*Female* — Unknown.

*Type* — Holotype male to be returned to the U.S.N.M.

*Type locality* — COSTA RICA, San Mateo, Hiquito (no date), (Pablo Schild col.).

*Notes* — This species falls into the group of species near *M. tapinivai* Lane, but the peculiar male genitalia separates it from all other of the subgenus *Abmyceta*.

*Mycetophila (Abmyceta) coxiponesi* sp. n.

*Male* — Head: Mouth parts, palpus and frons yellowish. Antenna with scape, torus and first five or six segments yellowish, then, gradually, segments become darker. Occiput yellowish.

Thorax: Pronotum yellowish. Mesonotum yellowish. Scutellum yellowish with four marginal setae. Postnotum brown in the middle, yellowish at the sides. Pleura, anepisternite brownish, the rest yellowish.

Wing hyaline a very faint mesial clouding which does not form a spot. Forks at about the same level. Haltere yellowish.

Legs: Yellowish, slightly darker on dorsum of mid and hind femora. Mid tibia with 4 or 5d., 3e., 2v. and 1i setae. Hind tibia with 5d., a numerous row of short subdorsal and 7e. setae.

Abdomen apparently yellowish.

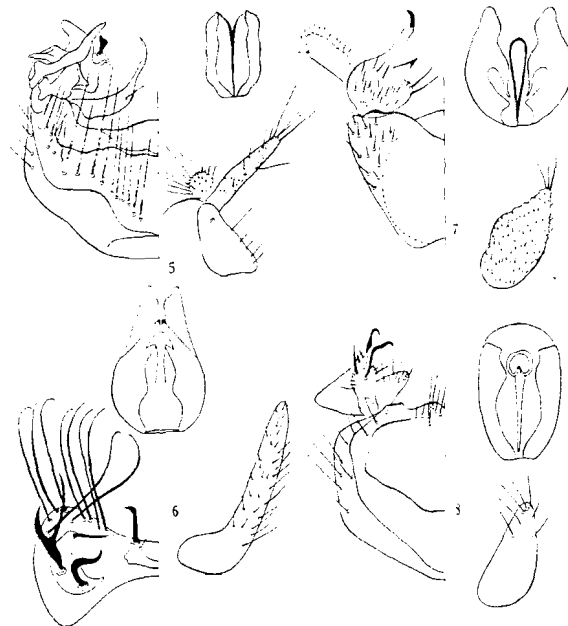


Fig. 5 — *Mycetophila (Abmyceta) carrerae* sp. n., basistyle, dististyle, mesosome and ninth tergite in dorso-ventral position; fig. 6 — *Mycetophila (Abmyceta) costaricensis* sp. n., basistyle, dististyle, mesosome and ninth tergite in dorso-ventral position; fig. 7 — *Mycetophila (Abmyceta) coxiponesi* sp. n., basistyle, dististyle, mesosome and ninth tergite in dorso-ventral position; fig. 8 — *Mycetophila (Abmyceta) leasi* sp. n., basistyle, dististyle, mesosome and ninth tergite in dorso-ventral position.

Genitalia (fig. 7): Basistyle with the fused lobes a little wider than long. Dististyle a lobe with an internal spine, a short and a long filamentous protuberance besides a flattened, broad strap shaped structure, setose on upper margin. Mesosome as in the figure. Ninth tergite shorter than basistyle, subtriangular, setose.

*Female* — Unknown.

*Types* — Holotype male, paratypes one male. Holotype to be returned to the British Museum (Natural History). Paratype registered in our collection under n. 13.281.

*Type locality* — BRASIL, State of Santa Catarina, Nova Teutonia, VIII and X. 1938 (Fritz Plaumann col.).

*Notes* — This species falls in our key in the *M. caribai* group of species but the characters of the male genitalia separate it from all others of this subgenus.

***Mycetophila (Abmyceta) forattini* Lane, 1955**

1955 Lane. *Trans. R. ent. Soc. London*, 106 (10):407.

*Distribution* — TRINIDAD (B. W. I.), Chaguaramas, I. 1958, Macqueripe, VII. 1957, U. S. Navy Base, XI. 1955 (T. H. C. Aitken col.).

***Mycetophila (Abmyceta) icosi* sp. n.**

*Male* — Head: Mouth parts and palpus brown. Frons yellowish brown. Antenna with scape and torus and first flagellar segment yellowish, other segments blackish with narrow basal rings. Occiput yellowish with an indistinct brown median line, covered with yellowish hairs.

*Thorax*: Pronotum yellowish. Mesonotum yellowish brown but anterior margin and posterior angles yellowish. Scutellum brownish, yellowish at margins with four marginal setae. Postnotum brownish. Pleura yellowish brown, katapisternite brownish posteriorly.

Wing hyaline with a small brown medial spot reaching upper fork. Haltere yellowish.

Legs yellowish. Mid tibia with 5d. and 3e., 3v. setae, and 3i. setae. Hind tibia with 5d. and 6e. setae.

Abdomen (lost in mounting).

*Genitalia* (fig. 8): Basistyle with lobes fused. Dististyle in two lobes, one elongate and ending in two strong spines the other subtriangular and with an upper spine. Mesosome as in figure. Ninth tergites not seen.

*Female* — Unknown.

*Type* — Holotype male, registered under n. 13.283.

*Type locality* — BRASIL, S. Paulo, Boracá, X. 1947 (E. X. Rabello col.).

*Notes* — This species is similar to *M. winnertzi* Lane, 1948, but the coloration characters as well as male genitalia separate it.

***Mycetophila (Abmyceta) laianasi* sp. n.**

*Male* — Head: Mouth parts and palpus brownish. Frons brown. Antenna with scape and torus yellowish, the flagellar segments with yellowish base and blackish apex. Occiput brownish, an indistinct longitudinal darker brown line, hairs yellowish.

*Thorax*: Pronotum yellowish. Mesonotum whitish anteriorly, yellowish posteriorly, with three large marks, the median one lighter brown in front and

dark brown behind, the lateral ones dark brown, covered with yellowish hairs. Scutellum blackish at base the rest yellowish, with four marginal setae. Postnotum blackish in the middle, yellowish at the sides. Pleura with brown anepisternite and upper portion of pteropleurite as well as margin of pleurotergite and hypopleurite, the rest yellowish.

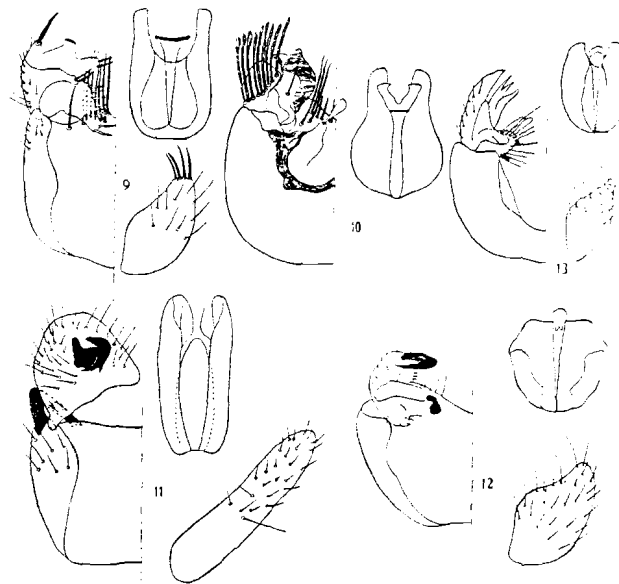


Fig. 9 — *Mycetophila (Abmyceta) laianasi* sp. n., basistyle, dististyle, mesosome and ninth tergite in dorso-ventral position; fig. 10 — *Mycetophila (Abmyceta) patagonae* sp. n., basistyle, dististyle, mesosome and ninth tergite in dorso-ventral position; fig. 11 — *Mycetophila (Abmyceta) pirapae* sp. n., basistyle, dististyle, mesosome and ninth tergite in dorso-ventral position; fig. 12 — *Mycetophila (Abmyceta) plaumanni* sp. n., basistyle, dististyle, mesosome and ninth tergite in dorso-ventral position; fig. 13 — *Mycetophila (Abmyceta) uacupisi* sp. n., basistyle, dististyle, mesosome and ninth tergite in dorso-ventral position.

Wing hyaline, the lower fork distinctly beyond the upper one. Haltere yellowish.

Legs yellowish but posterior portion of hind femur well as apex of mid and hind tibiae blackish. Mid tibia with 4d., 2e., 2v. and 2i. setae. Hind tibia with 4d. and 4e. setae.

Abdomen apparently brownish.

*Genitalia* (fig. 9): Basistyle with lobes fused and bearing rows of stout setae on upper margin. Dististyle a single broad lobe with upper rows of setae and a stout spine. Mesosome as in the figure. Ninth tergite shorter than length of basistyle, setose.

*Female* — Similar to male. Abdomen brown with apical yellow bands on segment III to VI. Cerci small.

*Types* — Holotype male, allotype, female, paratype one male registered under nos. 13.283 to 13.285.

*Type locality* — TRINIDAD (B. W. I.), Macqueripe, Tucker Valley, IV.56 and VII.57 allotype Chaguramas I.1958 (T.H.C. Aitken col.).

*Notes* — This species is near *M. yurimauesi* Lane, 1955 but coloration characters and male genitalia separate it from other species.

*Mycetophila* (*Abmyceta*) *patagonesi* sp. n.

*Male* — Head: Mouth parts, palpus and frons brownish. Antenna with yellowish scape and torus (the rest missing). Occiput brown with yellowish hairs.

Thorax: Pronotum yellowish. Mesonotum brown with three diluted dark brown spots. Scutellum dark brown marginal setae. Postnotum dark brown.

Wing with two spots the mesial one not invading costal cell but reaching stem of upper forks, the apical one much as in *M. illita* Freeman, 1951, anterior and not reaching veins of upper fork. Lower fork much beyond the upper one. Haltere yellowish.

Legs yellowish but extreme apex of mid and hind femora darkened. Mid tibia with 3d., 3e., 2v. and 0i. setae. Hind tibia with 5d. and 6e. setae.

Abdomen: Brown, segments II to IV with basal yellowish bands.

Genitalia (fig. 10): Genitalia very large, much thicker than abdomen. Basistyles fused into a structure nearly as broad as wide and bearing above two lateral and a mesial row of stout striated setose which flare at apex. Dististyle reduced to mound-like, nude, striated structures. Mesosome and ninth tergite as in figure.

*Female* — Unknown.

*Types* — Holotype male, to be returned to the Instituto Miguel Lillo, paratype one male, registered in our collection under n. 13.286.

*Type locality* — ARGENTINA, Tucuman, Tali del Valle, VII.54 (holotype); Lacavera, XI.51 (paratype), (Aczel and Golbach col.).

*Notes*: The structures of male genitalia besides other characters separate this species from all others of this subgenus.

*Mycetophila* (*Abmyceta*) *pirapesi* sp. n.

*Male* — Head: Mouth parts and palpus yellowish brown. Frons blackish. Antenna with scape brown, torus and basal half of first flagellar segment yellowish, the rest blackish. Occiput blackish with yellowish hairs.

Thorax: Pronotum yellowish brown. Mesonotum blackish with yellowish hairs. Scutellum blackish with four marginal setae. Postnotum blackish. Pleura blackish as well as hypopleurite.

Wing with two blackish marks, the mesial one involving base of upper fork, the distal one large but not reaching the apex of wing and diluting as it approaches the lower fork. Lower fork quite beyond the upper one. Haltere yellowish.

Legs yellowish, hind femur slightly darkened at apex. Mid tibia with 4d., 2e., 1v. and 1i. setae. Hind tibia with 4d. and 5e. setae

Abdomen: Apparently blackish.

Genitalia (fig. 11): Basistyle with lobes fused, the upper margin sclerotized. Dististyle a mound-like setose lobe bearing in the middle a strongly sclerotized structure as in the figure. Mesosome slender and as in the figure. Ninth tergite nearly as long as both basistyle and dististyle.

*Female* — Unknown.

*Types* — Holotype male, paratypes two males. Holotype and one paratype registered under nos. 13.287 and 13.288. One paratype to be returned to the Instituto Miguel Lillo, Tucuman, Argentina.

*Type locality* — ARGENTINA, Santa Cruz, Lago Argentino, II.1955 (W. Willink col.).

*Notes* — This species is near *M. tapuii* Lane (in press) but differs from it and others in adult characters as well as the male genitalia.

*Mycetophila* (*Abmyceta*) *plaumanni* sp. n.

*Male* — Head: Mouth parts, palpus and frons brownish. Antenna with yellowish scape and torus and brownish flagellum. Occiput brownish with yellow hairs.

Thorax: Pronotum yellowish. Mesonotum yellowish, whitish yellow on the sides with two small brown prescutellar marks. Scutellum yellowish with four marginal setae. Postnotum brownish. Pleura yellowish, hypopleurite brownish.

Wing hyaline with a small brown mesial spot. Lower fork beyond upper one. Haltere yellowish.

Legs: Yellowish but dorsum of mid and hind femora darkened. Mid tibia with 4d., 3e., 2v. and 1i. setae. Hind tibia with 4d. and 5e. setae.

Genitalia (fig. 12): Basistyle with lobes fused, broader than wide. Dististyle in three lobes, lower one with very large differentiated spine; mesial one ending in three short spines; upper one in two large spines, one of which is strongly curved. Mesosome and ninth tergites as in the figure.

*Female* — Unknown.

*Types* — Holotype male, registered in our collection under n. 13.289.

*Type locality* — BRASIL, State Santa Catarina, Nova Teutonia, VI.1938 (Fritz Plaumann col.).

*Notes* — We name this species in honor of its collector. It is near *M. winnertzi* Lane, 1948 but the male genitalia besides other characters separate it from all others of this subgenus.

***Mycetophila (Abmyceta) subrecta* Freeman, 1951**

1951 *Mycetophila recta* Freeman (*preoc.*), *Dipt. Pat. & S. Chile*, 3: 124.

1953 *Mycetophila subrecta* Freeman (n. n.), *Rev. Chil. Ent.*, 3: 39.

*Distribution* — ARGENTINA, Prov. de Tucuman, Tafi del Valle, XIII.1950 (R. Goibach col.).

***Mycetophila (Abmyceta) uacupisi* sp. n.**

*Male* — Head: Mouth parts, palpus and frons yellowish. Antenna with yellowish scape and torus, the flagellar segments with small basal yellowish rings, the rest blackish.

Thorax: Pronotum yellowish brown. Mesonotum yellowish with three separated brown marks. Scutellum brownish, yellowish in the middle with four marginal setae. Postnotum brown in the middle yellowish at the sides. Pleura yellowish brown but margin of pleurotergite and hypopleurite brown.

Wing hyaline, lower fork quite beyond the upper one. Halteres lost.

Legs yellowish. Mid tibia with 4d., 3e., 2v. and 4i. setae. Hind tibia with 5d. and 6e. setae.

Abdomen: not in good condition.

Genitalia (fig. 13): Basistyle with lobes fused, broader than long. Dististyle a large lobe with several protuberances and at base a stout spine. Mesosome as in the figure. Ninth tergite very small and subtriangular.

*Female* — Unknown.

*Type* — Holotype male. To be returned to the British Museum (Natural History).

*Type locality* — BRASIL, State of S. Catarina, N. Teutonia, VI.1938 (F. Plaumann col.).

*Notes* — This species is quite near *M. caribai* Lane, but has a completely different dististyle as well as other structural differences.

***Mycetophila (Abmyceta) uboyasi* Lane, 1955**

1955 Lane, *Trans. R. ent. Soc. London*, 106 (10): 416.

*Distribution* — TRINIDAD (B.W. I.), U. S. Naval Station, IX.1957 (T. H. C. Aitken col.).