

A NEW BRAZILIAN "LEIA"
(Diptera, Mycetophilidae)¹

FRANK SHAW
University of Massachusetts, Amherst, U.S.A.

(With one text-figure)

While working, together with Prof. JOHN LANE, on the preparation of a key for the Neotropical species of *Leia* Meigen, 1818, I encountered a new species from the State of Paraná in Brazil. This new species is described below and the male hypopygium is figured.

Leia fisherae n. sp.

Male - Length 4 mm. General color light brown or yellow as opposed to the dark species as *Leia paulensis* or *monoleuca*.

Antennae sixteen segmented, basal two segments yellow, remainder dark brown. Head pale yellow, setulae and setae black. Ocelli 3, median smallest. Lateral ocelli located in black spot. Mouth-parts yellow.

Thorax generally yellow. Mesonotum yellow with a small brown spot directly above each wing base. A median brown stripe commencing opposite wing base. The median stripe has a pale inner stripe. Metanotum with a pale brown median portion. Remainder of metanotum yellow. Pleurotergites darkened laterally with conspicuous brown setae.

Wing 3 1/2 mm. long. Hyaline with pale brown apical band covering outer third of wing. A pale brown spot at base of r.-m. crossvein and also one behind Cu.2. Neither the medial nor the cubital veins interrupted before the wing margin. Haltere with yellow pedicel and black knob.

Legs yellow, tarsi somewhat darkened. Apex of coxa, trochanter and basal portion of femur of all legs with dark brown stripes.

Abdomen - Dorsal portion of segments 1-5 yellow at base, apical third or half dark brown. Apical band on segments 4-5 produced anteriorly to form dark median stripe. Remaining segments dark brown except for

¹ Received for publication November 19, 1949.

hypopygium which is pale yellow. The distinctive features of the hypopygium include a mushroom-shaped dististyle, a pair of median structures which distally resemble the claws of a crab and some heavily chitinized black, median hooked structures at the tip of the aedeagus.

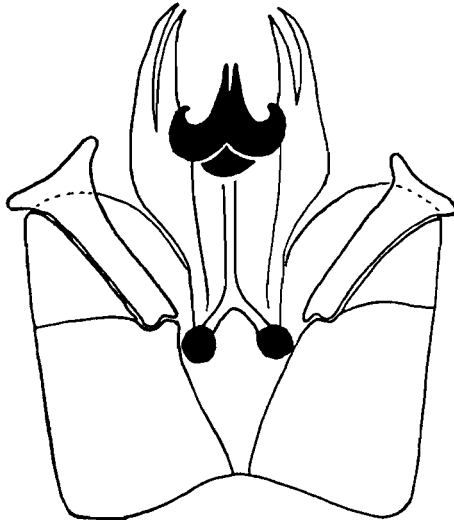


Fig. 1 - *Leia fisherae* n. sp., male hypopygium.

One male taken by M. Witte on April 24, 1945, Rio Negro, Paraná, Brazil. *Type* in Shaw collection.

This species seems to be related to *Leia fasciata* Kertész. It can be distinguished by the fact that the band of the wing is apical rather than preapical as indicated by KERTÉSZ. The male hypopygium differs also, according to LANE.

The name of this species is given in honor of Dr. ELIZABETH G. FISHER.